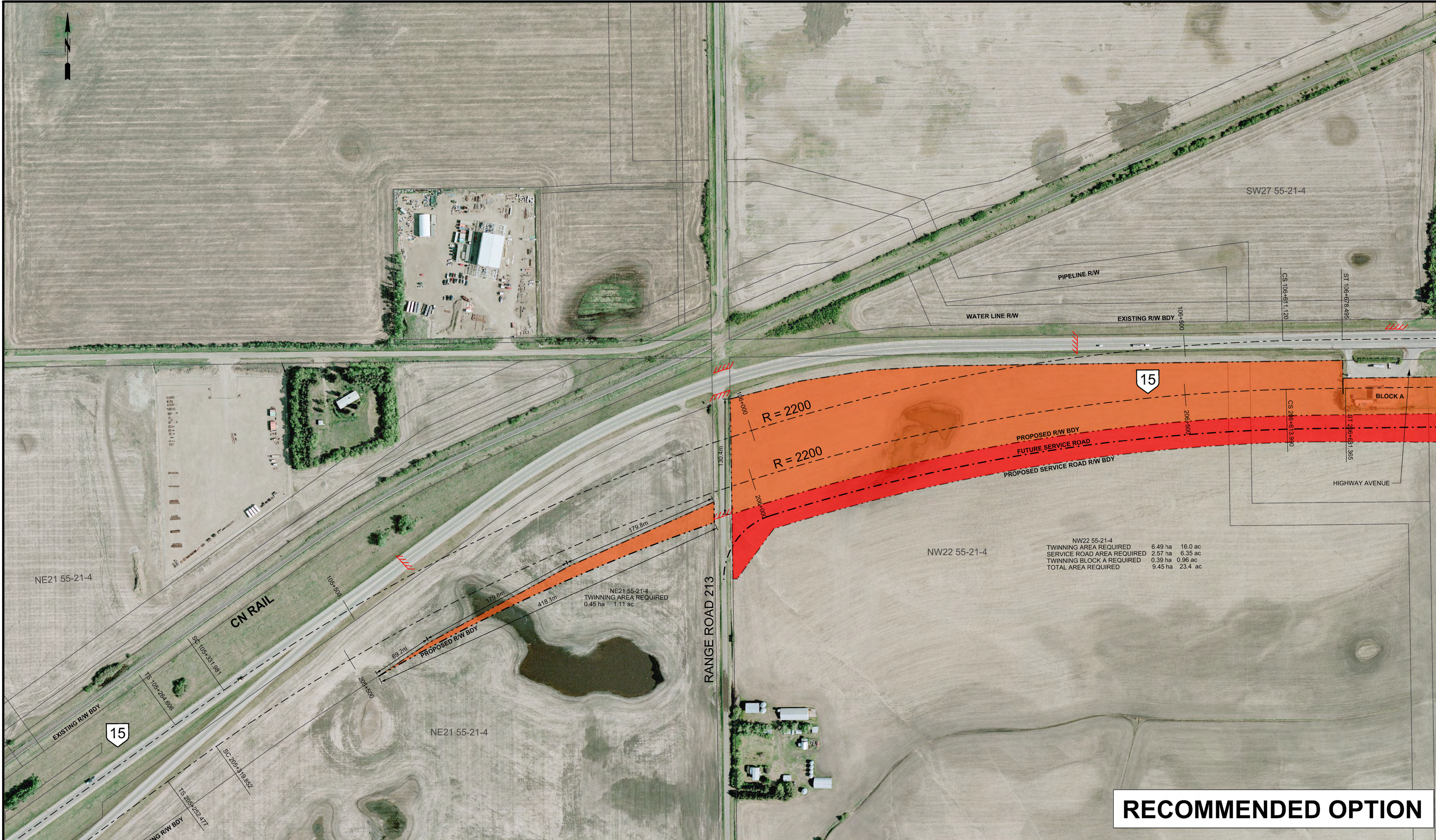


A P P E N D I X E

R I G H T - O F - W A Y P L A N S





SCALE 1:2000

0 20 40 60 80

TWINNING ROW REQ'D

SERVICE ROAD ROW REQ'D

CONSULTANT

CIMA

JOB No.

E00311A

DESIGNER

DATE

CHECKER

DATE

REV	DATE	REVISION	BY
1	2015-12-18	FINAL SUBMISSION	DD

DATE	LOCATION	SITE
------	----------	------

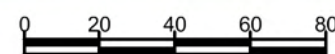
Alberta Transportation

HIGHWAY 15 TWINNING SOUTH ALTERNATIVE ROW AREA REQUIRED

CONTRACT	HIGHWAY HWY 15/06	SHEET 1 OF 5	DRAWING FIGURE 1
----------	-------------------	--------------	------------------



SCALE 1:2000



TWINNING ROW REQ'D

SERVICE ROAD ROW
REQ'D

CONSULTANT



JOB No.	E00311A
---------	---------

DESIGNER

DATE_____

CHECKER

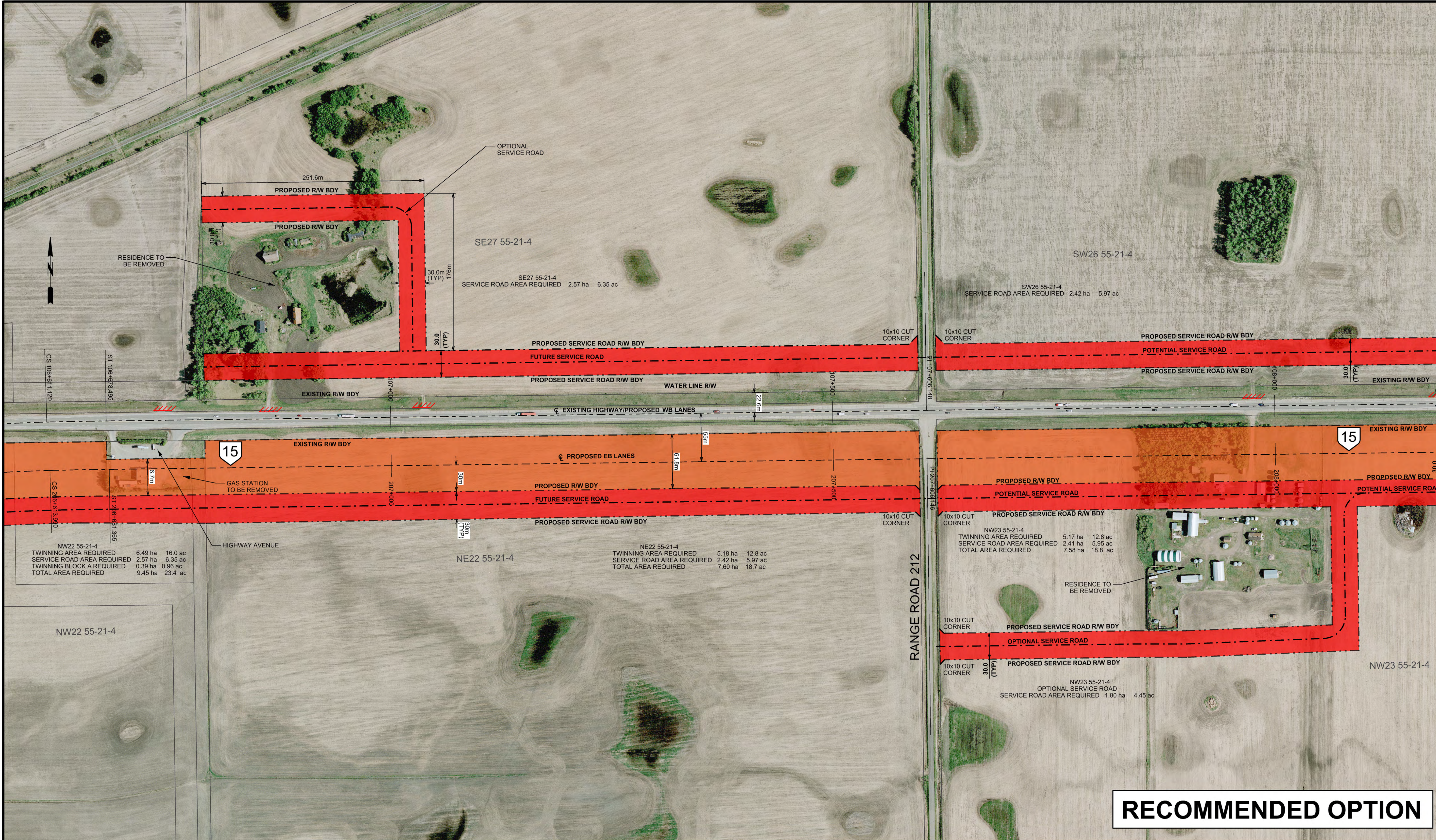
DATE _____

-			
-			
-			
-			
1	2015-12-18	FINAL SUBMISSION	DATE
REV	DATE	REVISION	BY
	DATE	LOCATION	SITE

Alberta Transportation

HIGHWAY 15 TWINNING
NORTH ALTERNATIVE
ROW AREA REQUIRED

CONTRACT	HIGHWAY HWY 15:06	SHEET 2 OF 5	DRAWING FIGURE 2
----------	----------------------	-----------------	---------------------



SCALE 1:2000

TWINNING ROW REQ'D

SERVICE ROAD ROW REQ'D

CONSULTANT

JOB No. E00311A

DESIGNER

DATE

CHECKER

DATE

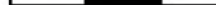
1	2015-12-18	FINAL SUBMISSION	DD
REV	DATE	REVISION	BY
	DATE	LOCATION	SITE

HIGHWAY 15 TWINNING SOUTH ALTERNATIVE ROW AREA REQUIRED

CONTRACT	HIGHWAY HWY 15.06	SHEET 2 OF 5	DRAWING FIGURE 2
----------	-------------------	--------------	------------------



SCALE 1:2000

A horizontal scale bar with alternating black and white segments. It is marked with the numbers 0, 20, 40, 60, and 80 at regular intervals.

TWINNING ROW REQ'D

SERVICE ROAD ROW
REQ'D



CONSULTANT



JOB No.	E00311A
---------	---------

DESIGNER

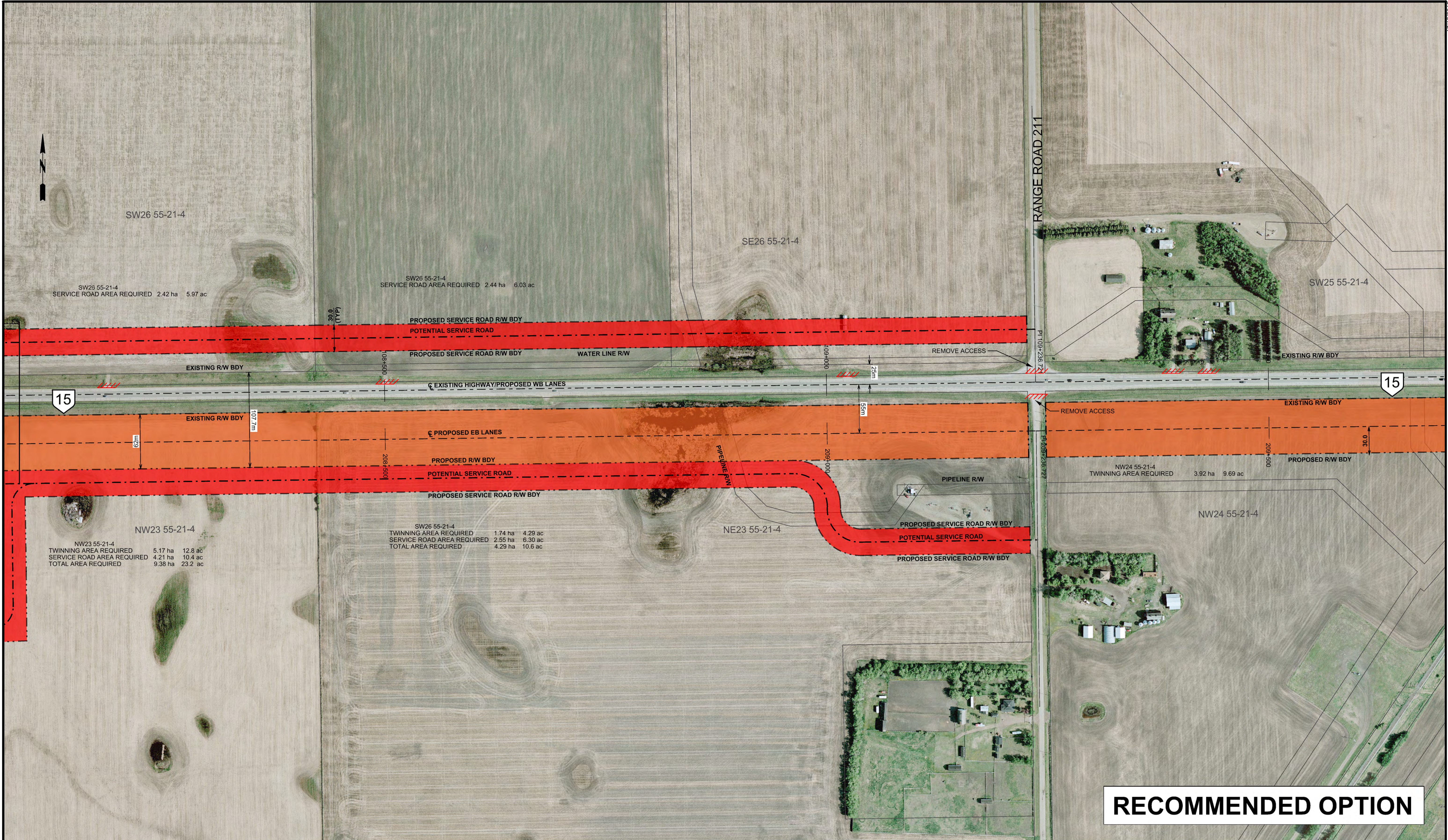
CHECKER

-				
-				
-				
-				
1	2015-12-18	FINAL SUBMISSION		DD
REV	DATE	REVISION		BY
DATE		LOCATION		SITE

Alberta Transportation

HIGHWAY 15 TWINNING
NORTH ALTERNATIVE
ROW AREA REQUIRED

CONTRACT	HIGHWAY HWY 15:06	SHEET 3 OF 5	DRAWING FIGURE 3
----------	----------------------	-----------------	---------------------



SCALE 1:2000

TWINNING ROW REQ'D

SERVICE ROAD ROW REQ'D

CONSULTANT

JOB No. E00311A

DESIGNER

DATE

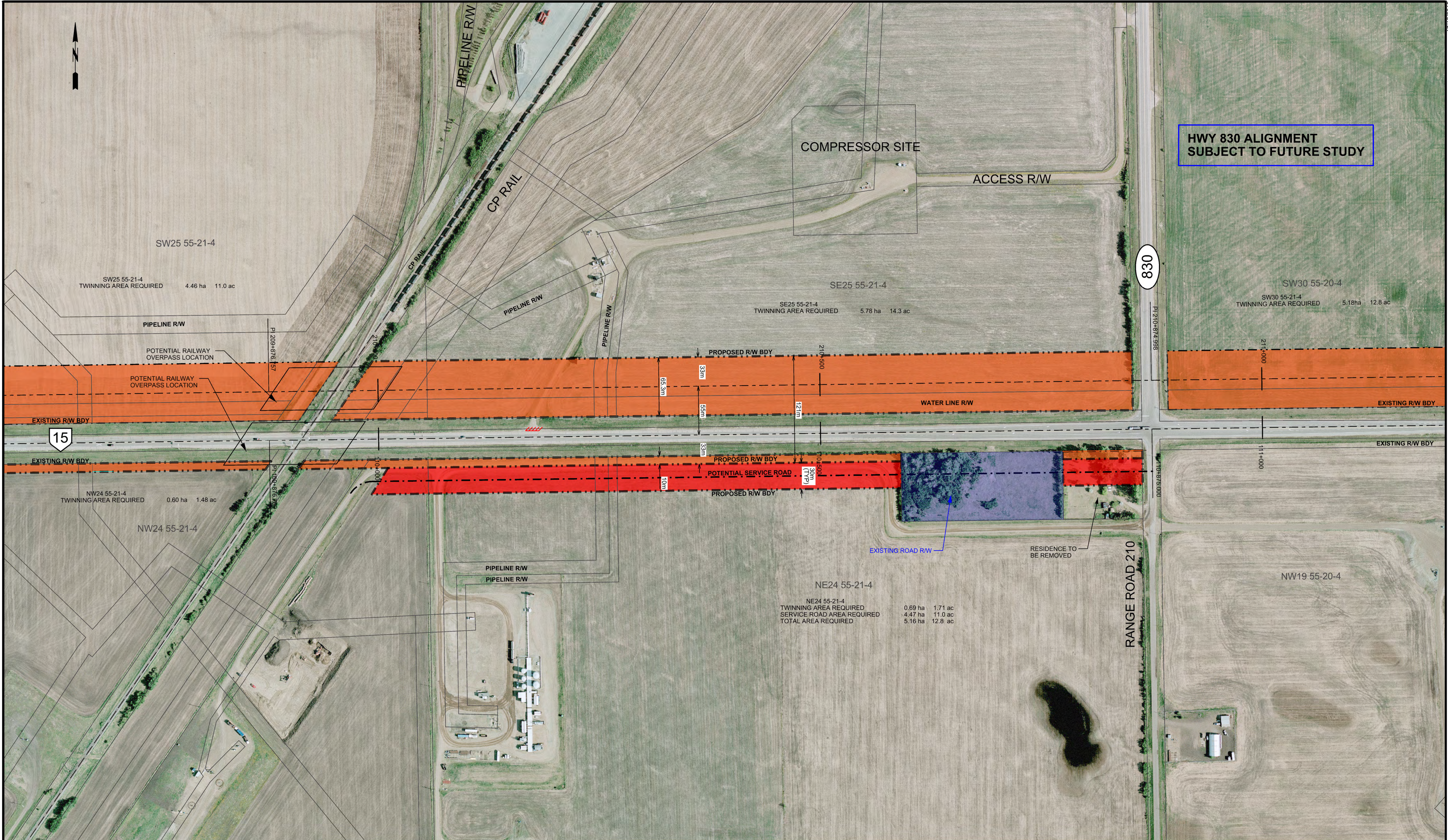
CHECKER

DATE

1	2015-12-18	FINAL SUBMISSION	DD
REV	DATE	REVISION	BY
	DATE	LOCATION	SITE

HIGHWAY 15 TWINNING SOUTH ALTERNATIVE ROW AREA REQUIRED

CONTRACT	HIGHWAY HWY 15/06	SHEET 3 OF 5	DRAWING FIGURE 3
----------	-------------------	--------------	------------------



SCALE 1:2000

TWINNING ROW REQ'D

SERVICE ROAD ROW REQ'D

CONSULTANT

JOB No. E00311A

DESIGNER

DATE

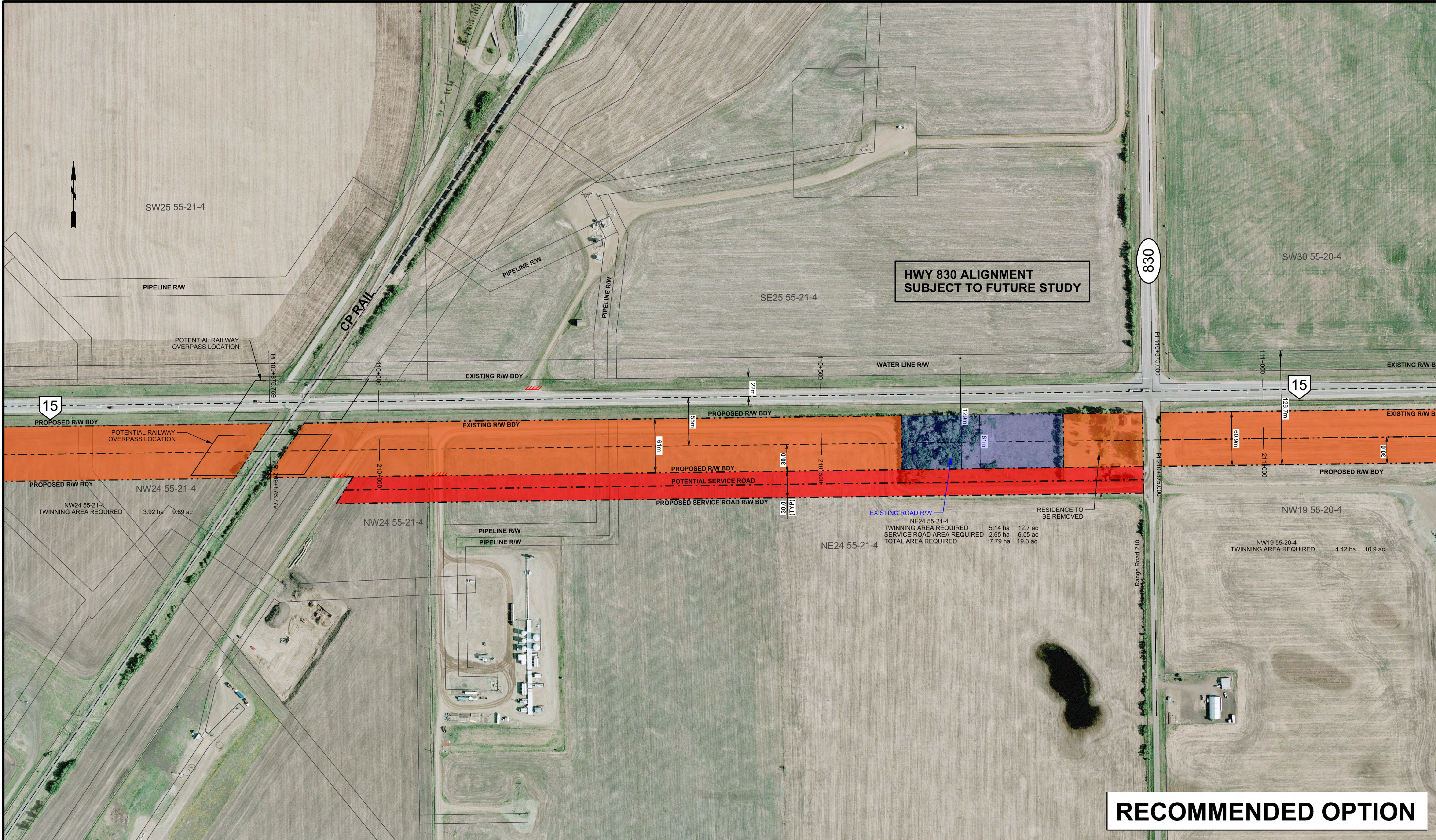
CHECKER

DATE

1	2015-12-18	FINAL SUBMISSION	DD
REV	DATE	REVISION	BY
	DATE	LOCATION	SITE

HIGHWAY 15 TWINNING NORTH ALTERNATIVE ROW AREA REQUIRED

CONTRACT	HIGHWAY HWY 15/06	SHEET 4 OF 5	DRAWING FIGURE 4
----------	-------------------	--------------	------------------



SCALE 1:2000

0 20 40 60 80

TWINNING ROW REQ'D

SERVICE ROAD ROW REQ'D

CONSULTANT

CIMA

JOB No. E00311A

DESIGNER

DATE

CHECKER

DATE

REV	DATE	REVISION	BY
1	2015-12-18	FINAL SUBMISSION	DD

DATE	LOCATION	SITE
------	----------	------

Alberta Transportation

HIGHWAY 15 TWINNING SOUTH ALTERNATIVE ROW AREA REQUIRED

CONTRACT	HIGHWAY HWY 15/06	SHEET 4 OF 5	DRAWING FIGURE 4
----------	-------------------	--------------	------------------

DEPARTMENT BAR CODE

SURVEYED

BY

DATE

PHOTO

DESCRIPTION
HIGHWAY 15 TWINNING NORTH ALTERNATIVE
ROW AREA REQUIRED

CONTRACT
HWY 15/06

DRAWING
FIGURE 5



SCALE 1:2000
0 20 40 60 80

TWINNING ROW REQ'D

SERVICE ROAD ROW REQ'D

CONSULTANT

JOB No. E00311A

DESIGNER

DATE

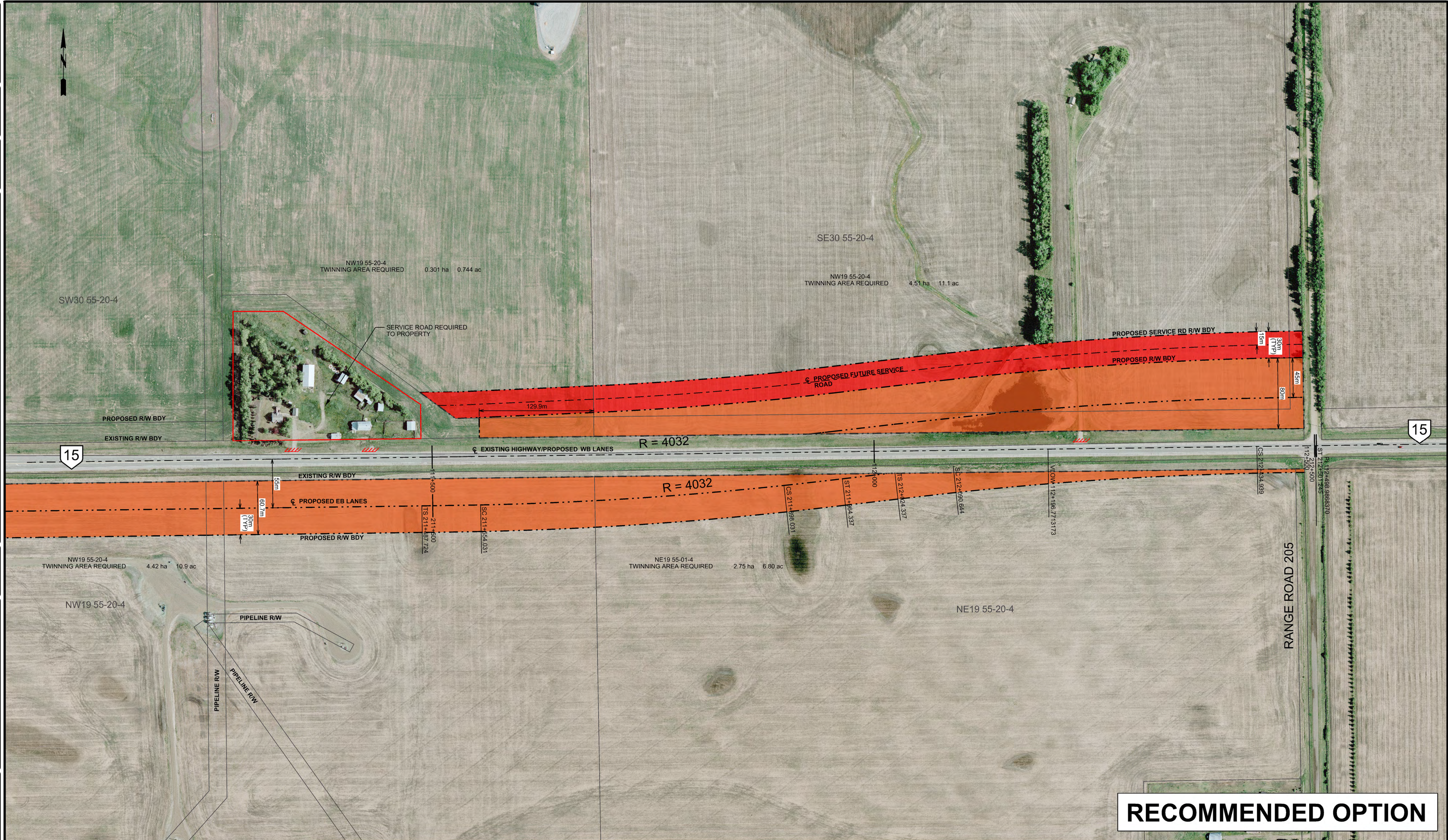
CHECKER

DATE

REV	DATE	REVISION	BY
1	2015-12-18	FINAL SUBMISSION	DD

CONTRACT	HIGHWAY HWY 15/06	SHEET 5 OF 5	DRAWING FIGURE 5
----------	-------------------	--------------	------------------

HIGHWAY 15 TWINNING
NORTH ALTERNATIVE
ROW AREA REQUIRED




RECOMMENDED OPTION

Alberta Transportation

HIGHWAY 15 TWINNING
SOUTH ALTERNATIVE
ROW AREA REQUIRED

-			
-			
-			
-			
1	2015-12-18	FINAL SUBMISSION	DD
REV	DATE	REVISION	BY
DATE		LOCATION	SITE

 Transportation			
<h1 style="text-align: center;">HIGHWAY 15 TWINNING SOUTH ALTERNATIVE ROW AREA REQUIRED</h1>			
CONTRACT	HIGHWAY HWY 15/06	SHEET 5 OF 5	DRAWING FIGURE 5

CONSULTANT



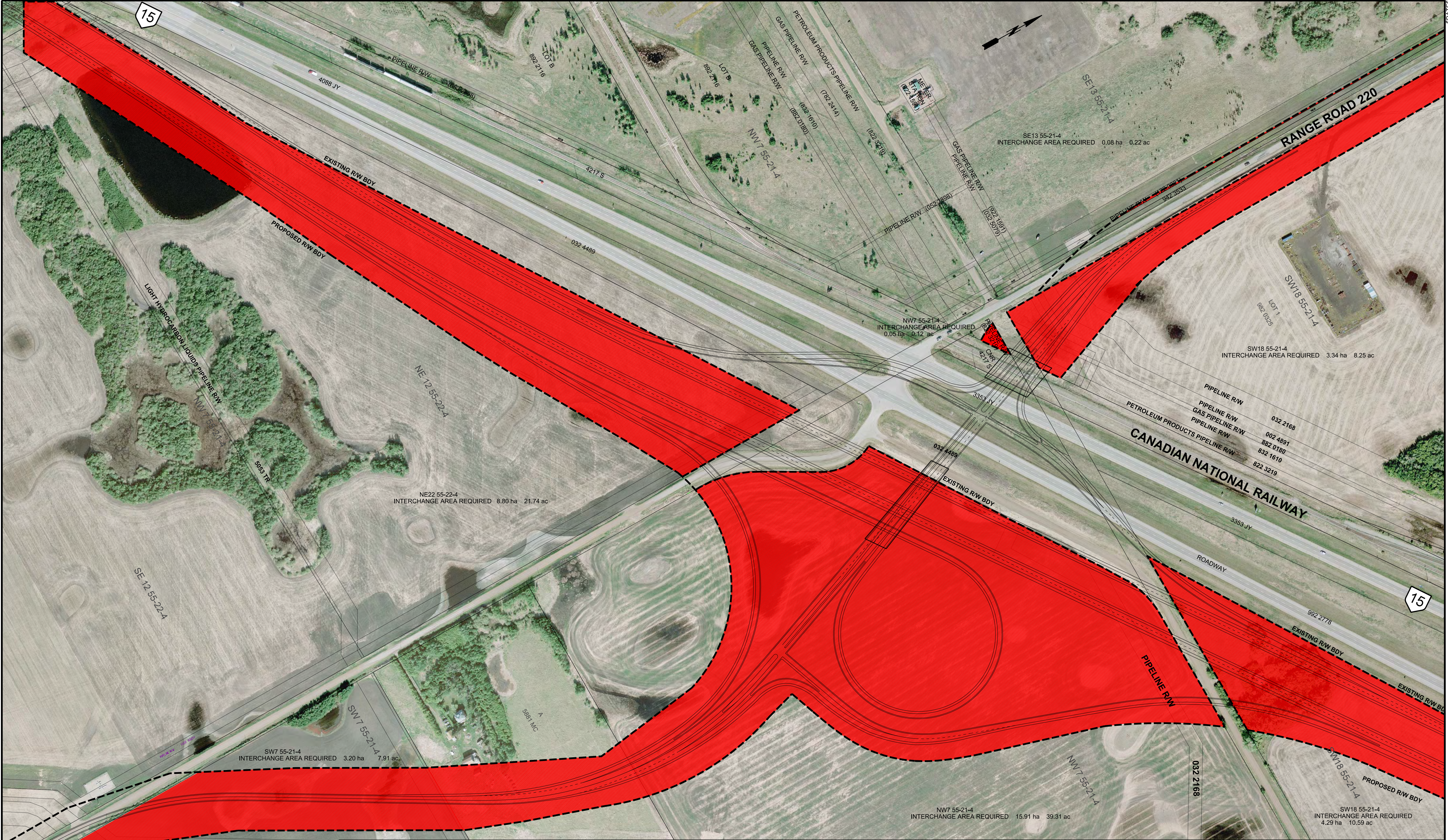
JOB No.	E00311A
---------	---------

DESIGNER

DATE_____

CHECKER

DATE _____



PIPELINE R/W (092 0759)

PETROLEUM PRODUCTS PIPELINE R/W (822 1189)

OIL PIPELINE R/W (3859 NY)

PIPELINE R/W (952 5272)

SW7 55-21-4 INTERCHANGE AREA REQUIRED 3.27 ha 8.08 ac

SCALE 1:2000

0 20 40 60 80

TWINNING ROW REQ'D

SERVICE ROAD ROW REQ'D

INTERCHANGE ROW REQ'D

CONSULTANT

JOB No. E00311A

DESIGNER

DATE

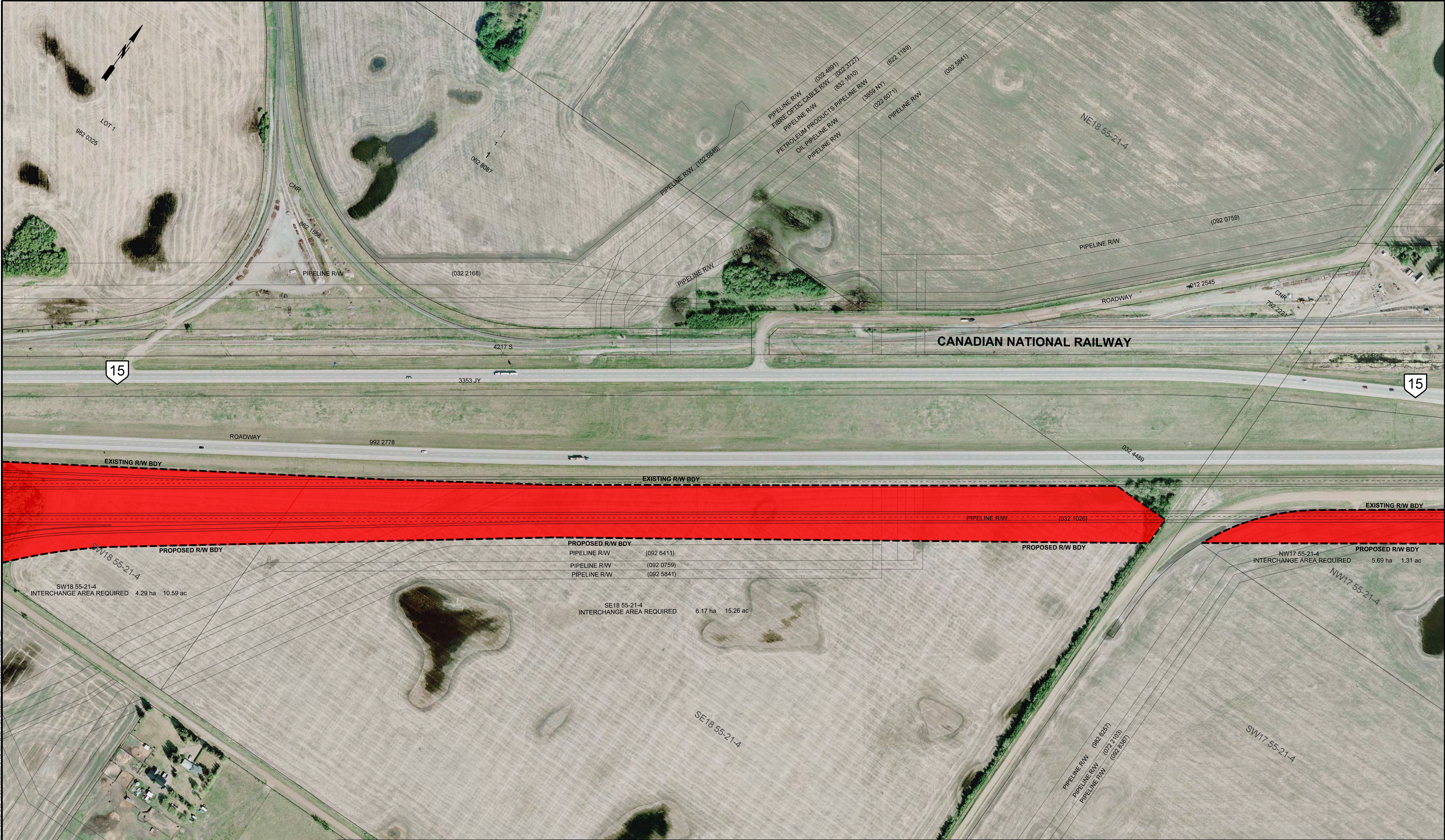
CHECKER

DATE

1	2015-12-18	FINAL SUBMISSION	DD
REV	DATE	REVISION	BY
	DATE	LOCATION	SITE

HIGHWAY 15 TWINNING
ULTIMATE INTERCHANGE STAGE
ROW AREA REQUIRED

CONTRACT	HIGHWAY HWY-15/06	SHEET 1 OF 6	DRAWING FIGURE 1
----------	----------------------	-----------------	---------------------



SCALE 1:2000

0 20 40 60 80

TWINNING ROW REQ'D

SERVICE ROAD ROW REQ'D

INTERCHANGE ROW REQ'D

CONSULTANT

JOB No. E00311A

DESIGNER

DATE

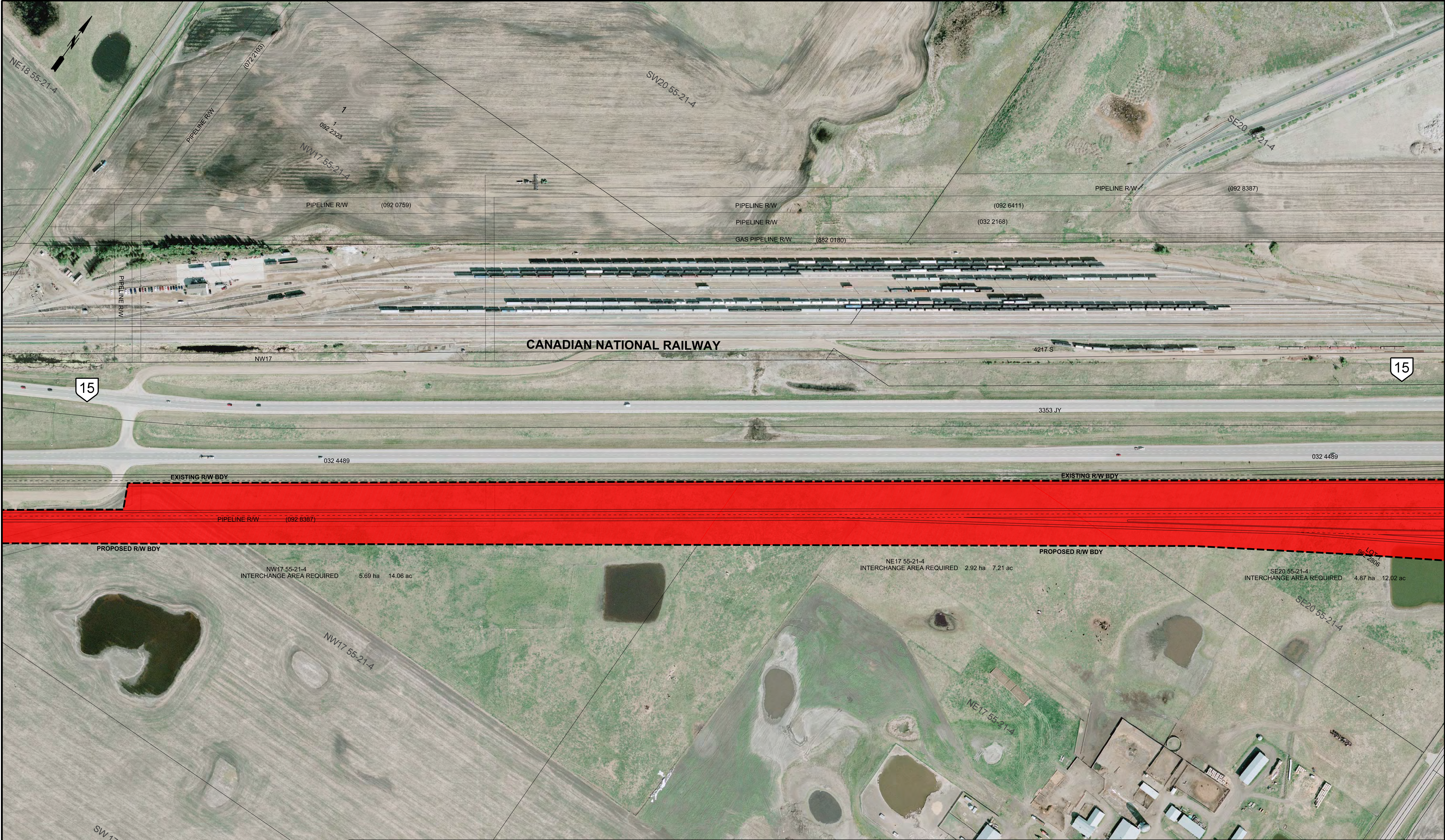
CHECKER

DATE

1	2015-12-18	FINAL SUBMISSION	DD
REV	DATE	REVISION	BY
	DATE	LOCATION	SITE

HIGHWAY 15 TWINNING
ULTIMATE INTERCHANGE STAGE
ROW AREA REQUIRED

CONTRACT	HIGHWAY HWY 15/06	SHEET 2 OF 6	DRAWING FIGURE 2
----------	-------------------	--------------	------------------



SCALE 1:2000

0

20

40

60

80

TWINNING ROW REQ'D

SERVICE ROAD ROW REQ'D

INTERCHANGE ROW REQ'D

CONSULTANT

CIMA

JOB No.

E00311A

DESIGNER

DATE

CHECKER

DATE

REV	DATE	REVISION	BY
1	2015-12-18	FINAL SUBMISSION	DD

DATE	LOCATION	SITE

Alberta Transportation

HIGHWAY 15 TWINNING
ULTIMATE INTERCHANGE STAGE
ROW AREA REQUIRED

CONTRACT	HIGHWAY HWY 15/06	SHEET 3 OF 6	DRAWING FIGURE 3
----------	----------------------	-----------------	---------------------

CONTRACT

HIGHWAY

DRAWING

HWY 1506

FIGURE 4

DESCRIPTION

HIGHWAY 15

ULTIMATE INTERCHANGE STAGE

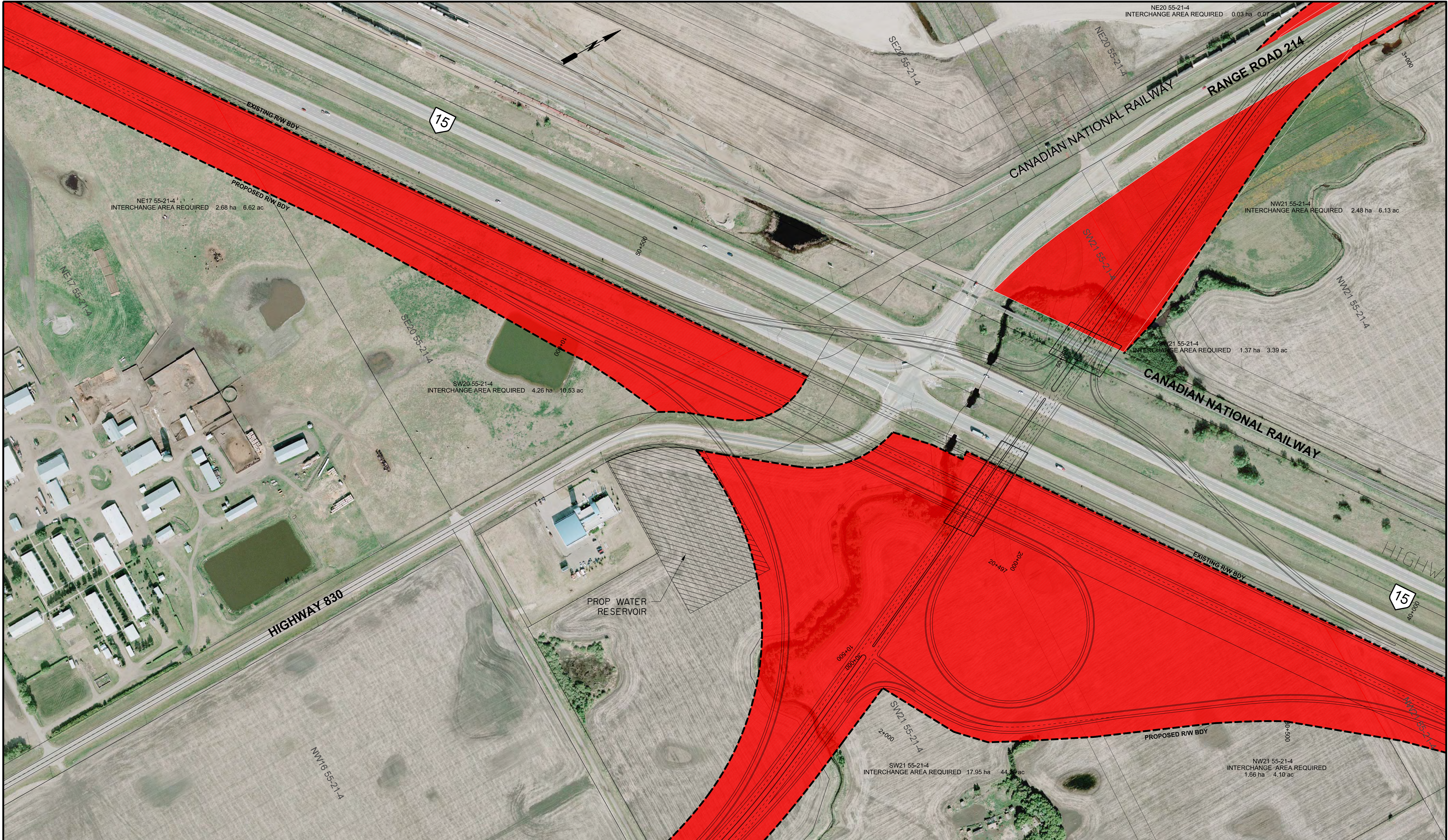
PHOTO

DATE

BY

SURVEYED

DEPARTMENT BAR CODE



SCALE 1:2000

0

20

40

60

80

TWINNING ROW REQ'D

SERVICE ROAD ROW REQ'D

INTERCHANGE ROW REQ'D

CIMA

JOB No.

E00311A

CONSULTANT

DESIGNER

CHECKER

DATE

DATE

1

2015-12-18

FINAL SUBMISSION

DD

REV

DATE

REVISION

BY

DATE

LOCATION

SITE

CONTRACT

HIGHWAY

SHEET

DRAWING

HWY-15-06

4 OF 6

FIGURE 4

Alberta Transportation

HIGHWAY 15 TWINNING

ULTIMATE INTERCHANGE STAGE

ROW AREA REQUIRED



SCALE 1:2000

0

20

40

60

80

TWINNING ROW REQ'D

SERVICE ROAD ROW REQ'D

INTERCHANGE ROW REQ'D

JOB No. E00311A

CONSULTANT

DESIGNER

CHECKER

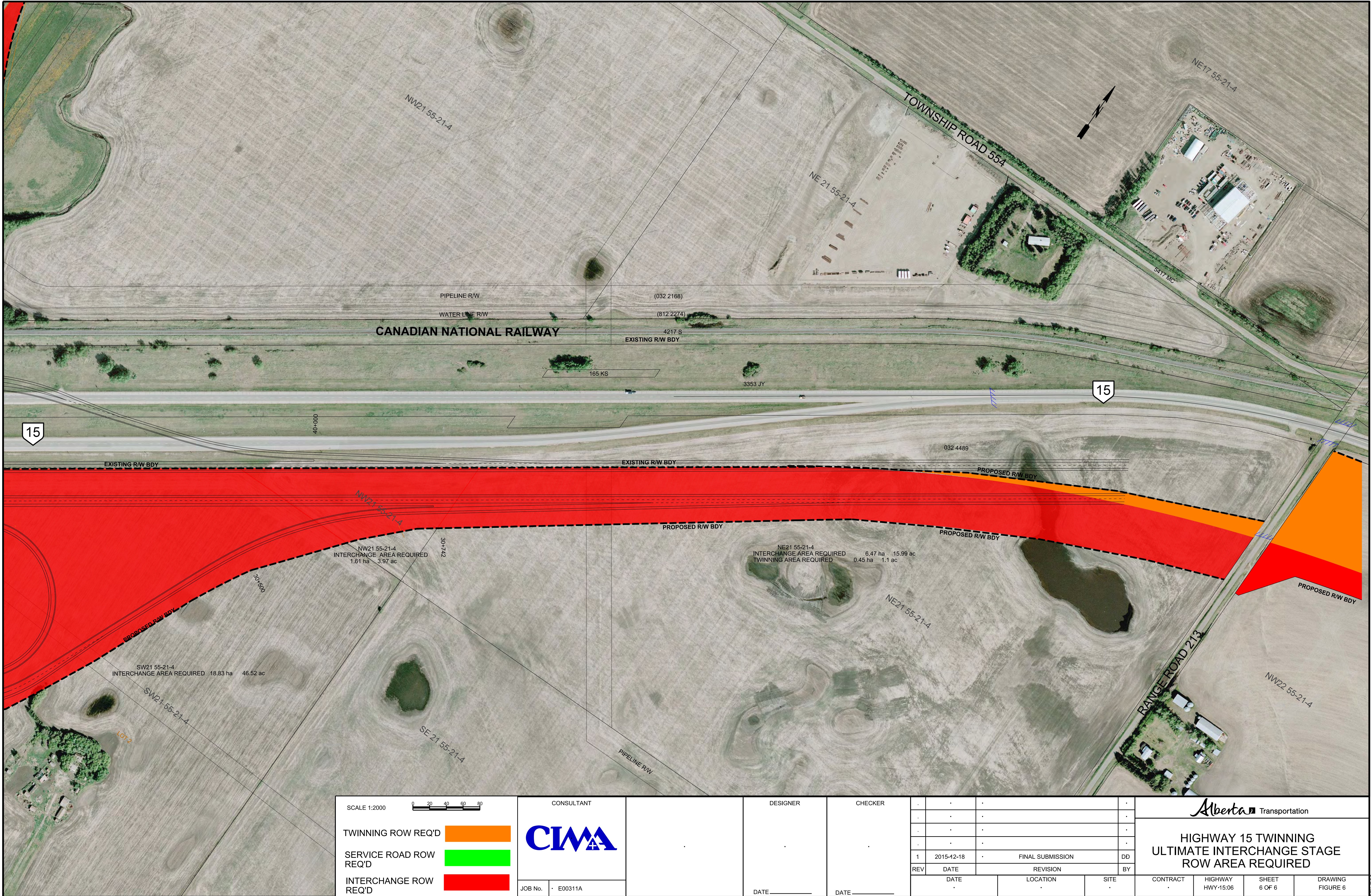
DATE

DATE

1	2015-12-18	FINAL SUBMISSION	DD
REV	DATE	REVISION	BY
	DATE	LOCATION	SITE

HIGHWAY 15 TWINNING
ULTIMATE INTERCHANGE STAGE
ROW AREAS REQUIRED

CONTRACT	HIGHWAY HWY-15/06	SHEET 5 OF 6	DRAWING FIGURE 5
----------	----------------------	-----------------	---------------------



SCALE 1:2000



TWINNING ROW REQ'D



SERVICE ROAD ROW REQ'D



INTERCHANGE ROW REQ'D



CONSULTANT

JOB No. E00311A

DESIGNER

DATE

CHECKER

DATE

REV	DATE	REVISION	BY
1	2015-12-18	FINAL SUBMISSION	DD
	DATE	LOCATION	SITE

HIGHWAY 15 TWINNING
ULTIMATE INTERCHANGE STAGE
ROW AREA REQUIRED

CONTRACT

HIGHWAY HWY-15-06

SHEET 6 OF 6

DRAWING FIGURE 6