

# WELCOME

## Ardrossan Hamlet Roads Upgrade Open House



# PROJECT LIMITS



**Legend**

- Proposed Upgrades
- Completed Upgrades

# PROJECT PURPOSE

To ensure that the Ardrossan roadway upgrades function safely and efficiently in the future by:

- meeting current County design standards and safety guidelines
- providing an appropriate road width
- discourage “shortcutting”
- improve pedestrian safety and convenience by providing pedestrian facilities where necessary

Upgrades are designed to improve safety for all road users and pedestrians.

# PURPOSE OF PUBLIC INFORMATION OPEN HOUSE

- Inform residents and the public on project scope and scale
- Present timelines for implementation
  - planning
  - construction
- Identify design constraints and opportunities
- Garner comments from the public

# PUBLIC COMMUNICATIONS

- Project information open house
  - held on November 25, 2015
- Ongoing communications
  - website updates
  - Winter/spring newsletters to stakeholders
  - social media (Facebook, Twitter)



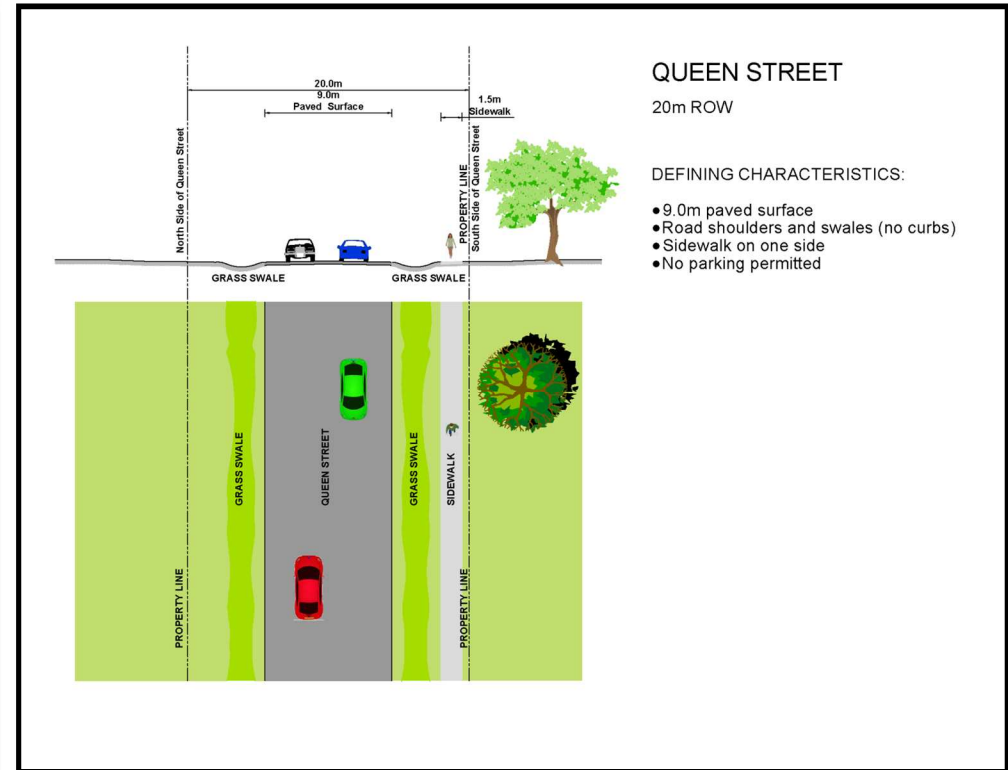
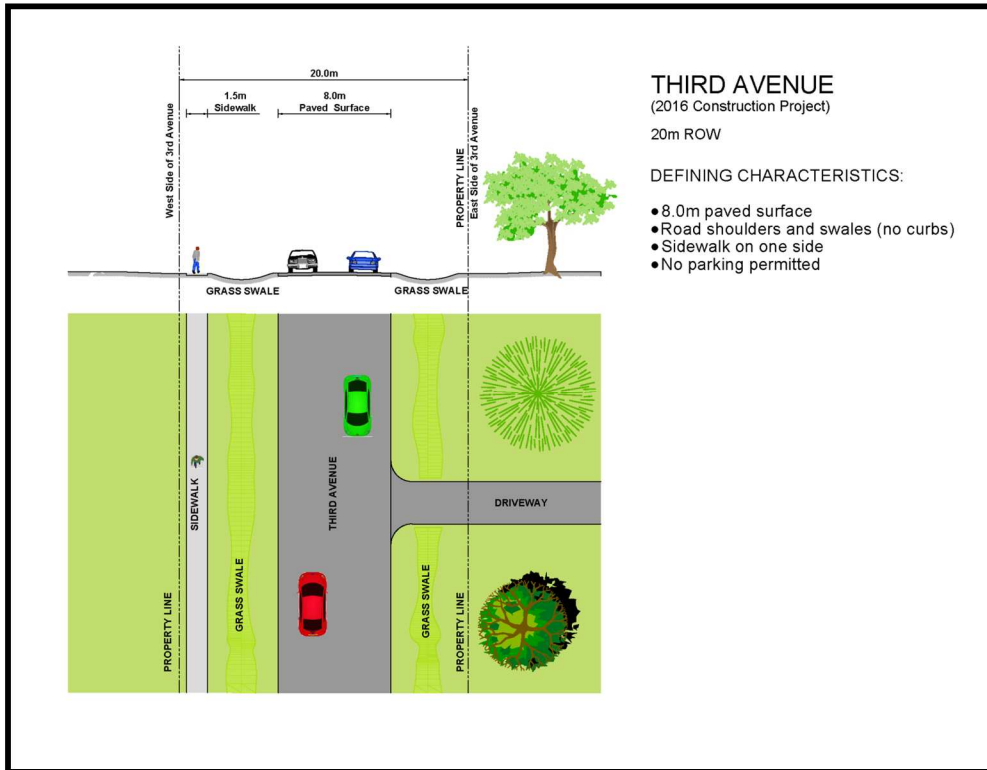


# DESIGN CRITERIA

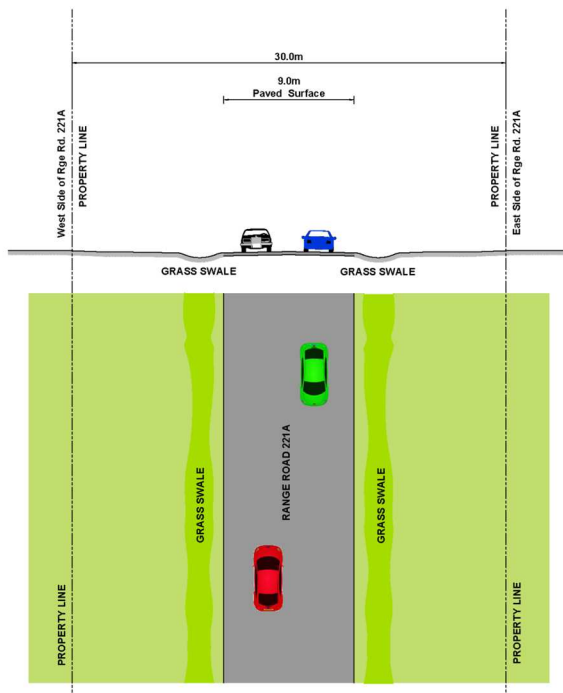
Improvements that are proposed as part of the Ardrossan Hamlet Roads Upgrade

- paved, widened travel surface
- sidewalks / multi-use trails
- traffic calming
- intersection improvements
- road right of way landscaping where feasible

# ROADWAY CROSS-SECTION



# ROADWAY CROSS-SECTION

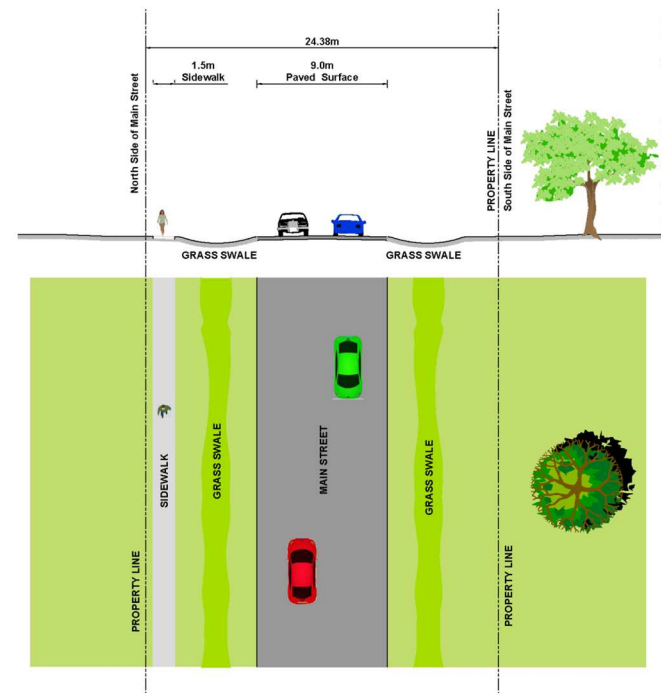


## RANGE ROAD 221A

30m ROW

### DEFINING CHARACTERISTICS:

- 9.0m paved surface
- Road shoulders and swales (no curbs)
- No parking permitted



## MAIN STREET

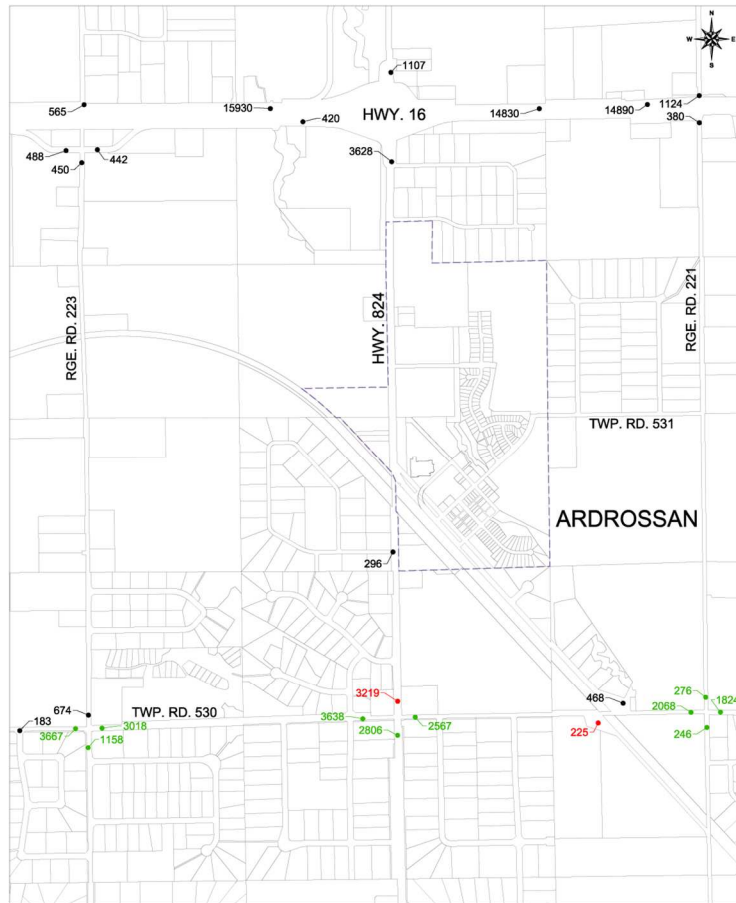
24.38m ROW

### DEFINING CHARACTERISTICS:

- 9.0m paved surface
- Road shoulders and swales (no curbs)
- Sidewalk on one side
- No parking permitted



# AVERAGE DAILY TRAFFIC COUNTS



**Legend:**  
 2015 Counts  
 2014 Counts  
 2013 Counts  
 2012 Counts  
 2011/Earlier Counts

# TRAFFIC CALMING

## Speed Humps:

- vertical deflection of  $\sim 80\text{mm}$
- implemented to lower speeds of fastest drivers
- reduction of traffic noise\*



## Centre Islands:

- concrete islands narrowing road surface
- used as a gateway into an area with traffic calming
- pedestrian refuge, speed reduction\*

\**Canadian Guide to Neighbourhood Traffic Calming*. Transportation Association of Canada, 1998. Print.

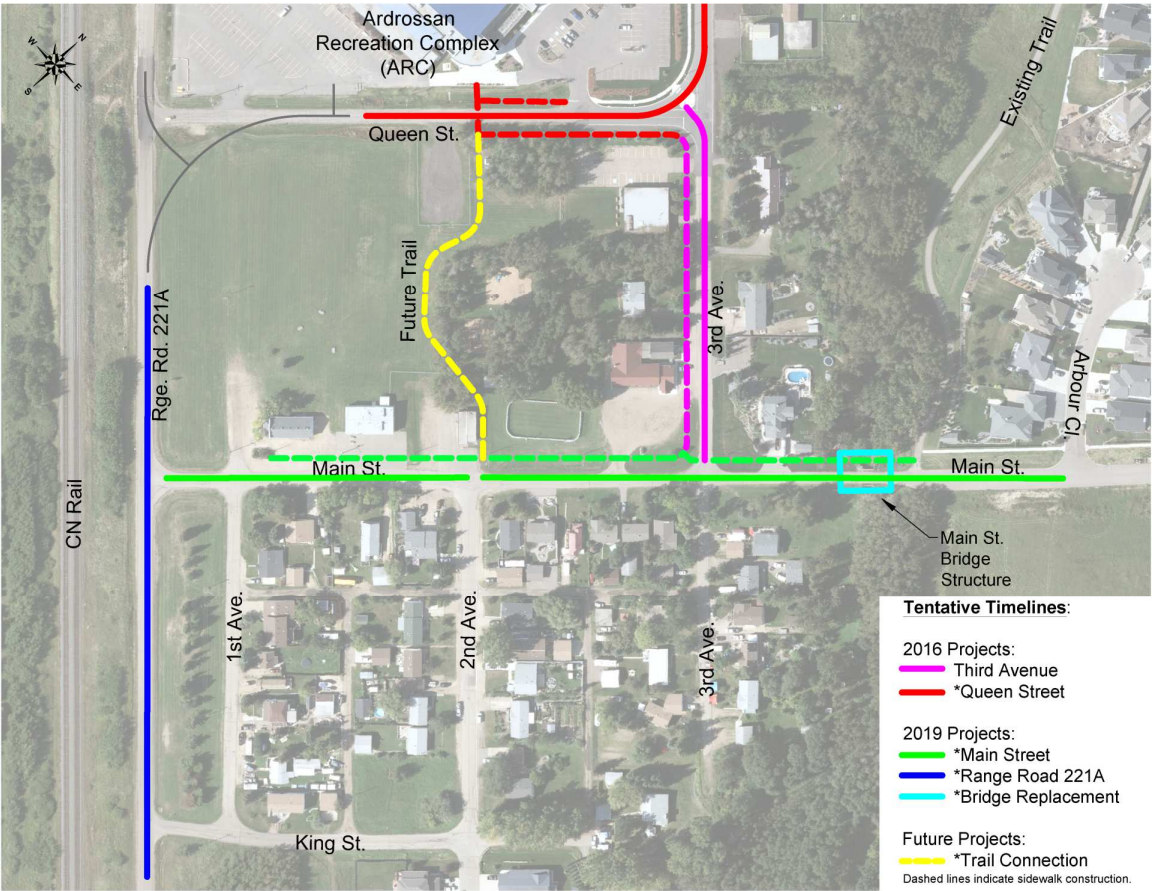
# ENVIRONMENTAL CONSIDERATIONS

The following will impact the road design and construction:

- Stormwater impacts to:
  - Point-Aux-Pins Creek
- Silt and erosion controls



# CONSTRUCTION TIMELINES



Capital Planning & Construction (CPC) is moving forward with planning and design of the Ardrossan Hamlet Roads Upgrade.

\*Construction of the Ardrossan Hamlet Roads Upgrade will proceed in phases over the next several years, based on regulatory and municipal funding approvals.



# THANK YOU

**Please complete a comment form  
or  
provide you comments online at:**

**[www.strathcona.ca/ardrossanroadsupgrade](http://www.strathcona.ca/ardrossanroadsupgrade)**