

**STRATHCONA COUNTY  
RECREATION AND  
CULTURE STRATEGY**

**FACILITIES  
AND SPACES**

**PREPARED BY: RC STRATEGIES+PERC  
MARCH 2019**









# SUMMARY

## INDOOR AND OUTDOOR



There are approximately 60 publicly supported indoor recreation and culture spaces in the County including:

- 3 fitness centres
- 3 aquatics facilities
- 7 ice arena facilities (11 ice sheets)
- Wilderness centre
- Performing arts theatre



Strathcona County's indoor recreation and culture assets have a modernized replacement value of over \$400 million.



Strathcona County offers nearly 2,000 hectares of open space, 280 km of trails, and over 450 outdoor recreation and sport spaces including:

- 147 playgrounds
- 105 sports fields
- 75 ball diamonds
- 29 outdoor rinks
- 21 pickleball courts
- 9 beach volleyball courts
- 2 year-round dog parks



The modernized replacement value of outdoor infrastructure in the County is approaching \$100 million.



Many facilities are operated through agreements with community groups, including:

- 14 community halls
- 3 seniors centres
- 3 curling rinks
- Museum

## UTILIZATION

**Community facilities accommodate over 1.2 million visits a year**



630,000+ annual fitness centre visits



Prime time ice utilization is at 93%. Over 1,000 hours remains available for rent.



14% of residents have a Millennium Card  
Over 14,000 Millennium Card holders



3,500 annual museum visits



18,000 annual art gallery visits



85 performances hosted by Festival Place annually

87 performances at Festival Place hosted by community organizations and schools annually



22,110 annual performance attendance

# TABLE OF CONTENTS

## FACILITIES AND SPACES

This report provides an overview of the facilities and spaces that Strathcona County operates or supports to ensure that recreation, parks and culture opportunities are available to local residents.

### Contents

<b>1</b>	<b>Infrastructure</b>	<b>1</b>
	Inventory	2
	Replacement Values	8
	Utilization Overview	11
<b>2</b>	<b>Utilization</b>	<b>11</b>
	Admissions and Memberships	12
	Programs	13
	Wellness Centres	14
	Community Events	14
	Ice Arenas	15
	Indoor Fields	17
	Dry Surface Arenas	18
	Indoor Racquet Courts	18
	Sports Fields	19
	Ball Diamonds	19
<b>3</b>	<b>Key Findings</b>	<b>20</b>



Snowshoe Path at Strathcona Wilderness Centre



# 1 INFRASTRUCTURE

This section contains a comprehensive listing of recreation and culture amenities operated or supported by the County as well as estimated replacement values. Condition assessment information is also presented based on previously conducted facility evaluations.



Broadmoor Lake Park Accessible Playground

# INVENTORY

## INDOOR FACILITIES

FACILITY/COMPONENT	QUANTITY	NOTES
<b>Community Halls</b> <i>*licensed operations</i>	14*	AJ Ottewell Community Centre Antler Lake Uncas Hall Adrossan Memorial Hall Brookville Hall Colchester Hall Deville/North Cooking Lake Hall Good Hope Hall Hastings Lake Hall Josephsburg Hall Partridge Hill Hall Sherwood Park Community Hall South Cooking Lake Hall Whitecroft Hall Wye Hall
<b>Curling Rinks (facilities)</b> <i>*licensed operations</i>	3*	Ardrossan Curling Club (4 sheets/lounge) Sherwood Park Curling Club (8 sheets/lounge) Strathcona Curling Club (4 sheets/lounge)
<b>Fitness Centres</b>	3	Ardrossan Recreation Complex Glen Allan Recreation Complex Millennium Place
<b>Gymnasiums</b>	1	Millennium Place
<b>Gymnastics Centre</b> <i>*licensed operation</i>	1*	Salto Gymnastics
<b>Halls/Social Spaces</b> <b>(banquets/activities/ performances)</b>	4	Ardrossan Recreation Complex Moyer Recreation Centre Festival Place Broadmoor Clubhouse
<b>Ice Arenas (facilities - winter)</b> <b>Ice Arenas (sheets - winter)</b> <b>Dry Surfaces – summer</b> <i>Note: some arenas have ice during the summer pending demand</i>	7 (facilities) 11 (sheets)	Sherwood Park Arena and Sports Centre (2) Ardrossan Recreation Complex (2) Broadmoor Arena (1) Glen Allan Recreation Complex (1) Strathcona Olympiette Centre (2) Millennium Place (2) Moyer Recreation Centre (1)

FACILITY/COMPONENT	QUANTITY	NOTES
<b>Indoor Playgrounds</b>	3	Ardrossan Recreation Complex Kinsmen Leisure Centre Millennium Place
<b>Indoor Racquet Courts</b>	6	Glen Allan Recreation Complex (2 racquetball, 2 squash, 2 convertible)
<b>Indoor Sports Fields</b>	2	Millennium Place
<b>Indoor Tracks</b>	2	Ardrossan Recreation Complex Millennium Place
<b>Museums</b> <i>*licensed operation</i>	1*	Strathcona County Museum & Archives
<b>Performing Arts Theatres</b>	1	Festival Place
<b>Seniors Centres</b> <i>*licensed operations</i>	4*	Ardrossan 55 Plus Club Sherwood Park 55 Plus Club South Cooking Lake Seniors Centre Strathcona Area 5(Josephburg) Seniors Centre
<b>Swimming Pools (facilities)</b>	3	Emerald Hills Leisure Centre (6-lane 25M, 4-lane 25M multi-depth, kids pool, whirlpool) Kinsmen Leisure Centre Centre (6-lane 25M, Deep tank, kids pool, whirlpool) Millennium Place (10-lane 25M, Wave pool, kids pool, whirlpool)
<b>Nature Centres</b>	1	Strathcona Wilderness Centre
<b>Youth Lounges</b>	2	Ardrossan Recreation Complex Millennium Place
<b>Visual Arts Gallery &amp; Studios</b>	2	Art Gallery @501 Smeltzer House Visual Arts Centre



## OUTDOOR FACILITIES

FACILITY/COMPONENT	QUANTITY	NOTES
<b>Artificial Turf Fields</b>	1	Emerald Hills Regional Park
<b>Athletic Tracks</b>	3	Ardrossan Athletic Park Salisbury Athletic Park Strathcona Athletic Park
<b>Ball Diamonds</b> <i>*licensed operations</i> <i>Note: school locations owned and operated by Strathcona County</i>	75 14*	Neighbourhood level and school diamonds (65) Baseball diamonds (4) Softball diamonds (6) <i>*Centennial Park (9)</i> <ul style="list-style-type: none"> <li>Baseball (2)</li> <li>Softball/Slo-pitch (7)</li> </ul> <i>*Sherwood Heights (5 baseball)</i>
<b>Basketball Courts</b>	9	Antler Lake Community Hall Ardrossan High School Ardrossan Elementary School Brentwood Elementary School Campbeltown Clover Bar Ranch Park Madonna School Ministik School Our Lady of Perpetual Help School
<b>Beach Volleyball Courts</b>	9	Ardrossan Athletic Park (1) Clarkdale Meadows Pond (1) Rotary Park at Trillium Centre (3) Salisbury Athletic Park (3) Sherwood Heights Park (1)
<b>Bike Parks</b>	1	Strathcona County Bike Skills Park
<b>Children's pump tracks</b>	1	Heritage Hills children's pump track
<b>Dog Off-Leash Parks (seasonal)</b>	2	Winter <ul style="list-style-type: none"> <li>Emerald Hills ball diamond</li> <li>Heritage Hills (temporary)</li> </ul> Summer <ul style="list-style-type: none"> <li>McGhan Park</li> <li>Kinsmen/Westboro Park</li> <li>Sherwood Heights</li> <li>Heritage Hills (temporary)</li> </ul>
<b>Dog Off-Leash Parks (year-round)</b>	2	Deermound Off-leash Park Sally Stewart Park

FACILITY/COMPONENT	QUANTITY	NOTES
<b>Gymkhana Grounds</b> <i>*licensed operations</i>	3*	Hastings Lake Community Hall Josephsburg Gymkhana Grounds Fultonvale Gymkhana Grounds
<b>Municipal Golf Courses</b>	1	Broadmoor Public Golf Course and Driving Range
<b>One Wall Handball</b>	4	Wes Hosford School (3) Kinsmen Leisure Centre (1)
<b>Outdoor Rinks (boarded)</b>	7	Ardrossan Recreation Complex Brentwood Kinsmen/Westboro McGhan Park Mills Haven Sherwood Heights Strathcona Athletic Park
<b>Outdoor Rinks (non-boarded)</b>	22	Ardrossan Brentwood Clover Bar Ranch Colchester School Collingwood Cove Davidson Creek Deville/North Cooking Lake Emerald Hills Regional Park Fountain Creek Park Hastings Lake Heritage Hills Josephsburg Kinsmen Park McGhan Park McPherson Park Rainbow Park Salisbury Athletic Park Sherwood Heights South Cooking Lake Strathcona Athletic Park Uncas Whitecroft

FACILITY/COMPONENT	QUANTITY	NOTES
<b>Outdoor Rinks (skating pathways)</b>	3	Emerald Hills Regional Park Salisbury Athletic Park South Cooking Lake
<b>Overnight Accommodations</b>	1	Strathcona Wilderness Centre Lodge (41 spots) Walk In Group Tent Campsites (3 - SWC) Walk In Group Campsite (1) with Bunkhouses (4 bunkhouses – 8 capacity each) – SWC
<b>Park Space (ha)</b>	1,940 ha 1,520 ha	Open spaces Natural areas
<b>Pickleball Courts</b>	21	Ardrossan Athletic Park (3) Clover Bar School (2) McGhan Park (2) Sherwood Heights (8) Village on the Lake (6)
<b>Playgrounds</b>	147	Accessible playgrounds (15) School playgrounds (43) Community playgrounds (104)
<b>Sports Fields (grass)</b>	105	Full size fields (47) Neighbourhood level and school fields (58)
<b>Sailing</b> <i>*licensed operation</i>	1*	South Cooking Lake Sail Club
<b>Sledding Hills</b>	10	Broadmoor Lake Park Broadmoor Golf Course Clarkdale Meadows Pond Cottonwood Park Estates of Sherwood Park Florian Park Greengrove Park McGhan Park Strathcona Athletic Park Woodbridge Lake Park
<b>Skateboard Parks</b>	1	Millennium Skateboard Park
<b>Spray Parks</b>	2	Ardrossan Spray Park (opening Summer 2019) RE/MAX Spray Park and Playground



FACILITY/COMPONENT	QUANTITY	NOTES
<b>Spray Decks</b>	5	Brentwood Spray Deck Clover Bar Ranch Spray Deck Granville Spray Deck Kinsmen/Westboro Spray Deck Woodbridge Spray Deck
<b>Tennis Courts</b> <i>*licensed operations</i>	15 4*	Ardrossan Athletic Park (2) Brentwood School(2) Broadmoor Tennis Club* (4) Clover Bar School (2) Hastings Lake (1) Jean Vanier School (2) Kinsmen/Westboro (4) McGhan Park (2)
<b>Trails (km)</b>	280 km	Multi-use trails



Pickleball at Kinsmen / Westboro Park

# REPLACEMENT VALUES

Strathcona County established the following replacement values for County-operated indoor facilities. The replacement value for these total nearly \$384 million with the Community Centre and Millennium Place each accounting for approximately \$100 million in replacement values. As seen in the chart below, 11 of the 16 assets were built before 1980.

ASSET / FACILITY	YEAR BUILT	AGE (IN 2019)	REPLACEMENT COST	FACILITY SIZE (SQ. FT.)
Ardrossan Recreation Complex / Curling Rink	1963	56	\$23,820,726	118,217
Community Centre	2010	9	\$108,000,000	360,000
County Hall	1976	43	\$25,099,023	97,155
Emerald Hills Leisure Centre	2016	3	\$30,757,244	51,774
Festival Place	1993	26	\$7,432,831	29,816
Glen Allan Recreation Complex	1979	40	\$34,291,632	93,161
Kinsmen Leisure Centre	1974	45	\$6,460,061	34,670
Millennium Place	1999	20	\$99,794,352	271,114
Moyer Recreation Centre	1974	45	\$6,985,804	34,669
Shell Arena - Sports Centre	1973	46	\$7,556,250	37,500
Sherwood Park Arena Sports Centre	1962	57	\$16,988,667	84,311
Smeltzer - Clay Hut	1920	99	\$151,800	506
Smeltzer - House	1920	99	\$510,300	1,701
Smeltzer - Studio One	1920	99	\$61,500	205
Strathcona Olympiette Centre	1975	44	\$12,939,927	64,218
Strathcona Wilderness Centre - Lodge	1981	38	\$2,819,100	9,397
	Average	Average	Total	Total
	1971	48	\$383,669,216	1,288,414

Modernized replacement costs are used to estimate the value of current assets if they were all replaced to modern standards. The following charts include County-owned recreation and culture assets including facilities with licensed operations such as community halls. A rounded per unit value was assigned for each amenity type which was then multiplied by the quantity of current spaces in Strathcona County. This helps show that the County has a significant investment in recreation and culture infrastructure.

## INDOOR FACILITIES

Indoor recreation and culture facilities in the County have a modernized replacement value of approximately \$411 million.

SPACE	QUANTITY	MODERNIZED REPLACEMENT VALUE (PER UNIT)	MODERNIZED REPLACEMENT VALUE (TOTAL)
Community Halls	14	\$4,000,000	\$56,000,000
Curling Rinks (sheets)	16	\$2,500,000	\$40,000,000
Fitness Centres	3	\$2,000,000	\$6,000,000
Gymnasium Facilities	1	\$5,000,000	\$5,000,000
Gymnastics Centres	1	\$10,000,000	\$10,000,000
Social Spaces	4	\$500,000	\$2,000,000
Ice Arenas (sheets)	11	\$15,000,000	\$165,000,000
Indoor Playgrounds	3	\$500,000	\$1,500,000
Indoor Racquet Courts	6	\$250,000	\$1,500,000
Indoor Sports Fields	2	\$500,000	\$1,000,000
Indoor Tracks	2	\$250,000	\$500,000
Museums	1	\$5,000,000	\$5,000,000
Performing Arts Theatres	1	\$20,000,000	\$20,000,000
Seniors Centres	4	\$250,000	\$1,000,000
Swimming Pools	3	\$30,000,000	\$90,000,000
Wilderness Centres	1	\$5,000,000	\$5,000,000
Youth Centres	2	\$250,000	\$500,000
Visual Arts Galleries	2	\$500,000	\$1,000,000
			<b>Total</b>
			<b>\$411,000,000</b>



## OUTDOOR FACILITIES

The modernized replacement value of outdoor infrastructure in the County is approaching \$100 million.

SPACE	QUANTITY	MODERNIZED REPLACEMENT VALUE (PER UNIT)	MODERNIZED REPLACEMENT VALUE (TOTAL)
Artificial Turf Fields	1	\$750,000	\$750,000
Athletic Tracks	3	\$1,000,000	\$3,000,000
Ball Diamonds	75	\$250,000	\$18,750,000
Basketball Courts	9	\$250,000	\$2,250,000
Beach Volleyball Courts	9	\$100,000	\$900,000
Bike Parks	2	\$500,000	\$1,000,000
Dog Off-Leash Parks	2	\$500,000	\$1,000,000
Gymkhana Grounds	3	\$500,000	\$1,500,000
Municipal Golf Courses	1	\$10,000,000	\$10,000,000
One Wall Handball	4	\$100,000	\$400,000
Outdoor Rinks (boarded)	7	\$250,000	\$1,750,000
Outdoor Rinks (non-boarded)	22	\$100,000	\$2,200,000
Pickleball Courts	21	\$100,000	\$2,100,000
Playgrounds	147	\$100,000	\$14,700,000
Rectangular Fields (grass)	105	\$250,000	\$26,250,000
Skateboard Parks	1	\$750,000	\$750,000
Spray Decks	5	\$250,000	\$1,250,000
Spray Parks	2	\$1,000,000	\$2,000,000
Tennis Courts	15	\$100,000	\$1,500,000
Trails (km)	280	\$5,000	\$1,400,000
			<b>Total</b>
			<b>\$93,450,000</b>

## SUMMARY

In total, Strathcona County's recreation and culture assets have a modernized replacement value of over \$500 million.

TYPE	MODERNIZED REPLACEMENT VALUE
Indoor Facilities	\$411,000,000
Outdoor Spaces	\$93,450,000
<b>Total</b>	<b>\$504,450,000</b>

# 2 UTILIZATION

This section presents data and information on the utilization of facilities and spaces that the County operates.

## UTILIZATION OVERVIEW



### FACILITY BOOKINGS

- 175,000 annual hours in rentals



### PROGRAMS

- 47,600 annual registrations
- 88% are completed online (68% of the online are completed on a mobile phone or tablet)



### PASSES

- 14,000+ Millennium Cardholders
- 14% of population has a Millennium Card (24% has some form of recreation pass)



### ADMISSIONS

- Approximately 1.2M visits to our facilities each year



### RECREATION ACCESS PROGRAM

- 2,101 people currently on the program
- Program grows an average of 10% per year
- More than half of the individuals on the program are adults



### CULTURAL ATTENDANCE

- 3,500 annual museum visits
- 18,000 annual art gallery visits
- 85 annual performances
- 22,110 annual performance attendance



### ICE ARENAS

- 93% prime time utilization



### FITNESS CENTRES

- 630,000+ annual visits
- An average of 1,731 daily visits



### GYMNASIUM AT MILLENNIUM PLACE

- Always available for drop-in use



### SPORTS FIELDS

- 15,000 booked hours annually



### BALL DIAMONDS

- 4,600 booked hours annually



### COMMUNITY EVENTS

- 7 annual events
- 46,000 estimated attendance

# ADMISSIONS AND MEMBERSHIPS

There are currently over 14,000 Millennium Cardholders which means that about 14% of the population has a Millennium Card. Nearly a quarter (24%) have some form of recreation pass. In 2017, there were 1,225,544 visits recorded at community facilities. Nearly 900,000 of which (72%) were attributed to Millennium Place. The Strathcona Wilderness Centre recorded 7,934 visits in 2017.

## Total Visits 2017 Member Scans and Paid Admissions

### Millennium Place



### Glen Allan Recreation Complex



### Ardrossan Recreation Complex



### Kinsmen Leisure Centre



### Emerald Hills Leisure Centre



### Strathcona Wilderness Centre





## PROGRAMS

Approximately 47,600 program registrations occurred in 2017. A majority (88%) of the registrations were completed online; two-thirds (68%) of the online registrations were completed on a mobile phone or tablet device. Canada 150 activities highlighted recreation in 2017, featuring additional recreation and cultural experiences. Dryland drop-in fitness programs accounted for 54% of programs.

### 2017 Program Registrations

#### Drop In Fitness - Dryland



#### Drop In Fitness - Aquatics



#### Aquatics



#### Adult/Older Adult Wellness



#### Visual arts



#### Youth Programs



#### Preschool Programs



#### Performing Arts



#### Outdoor Programs (schools/bookings) - SWC

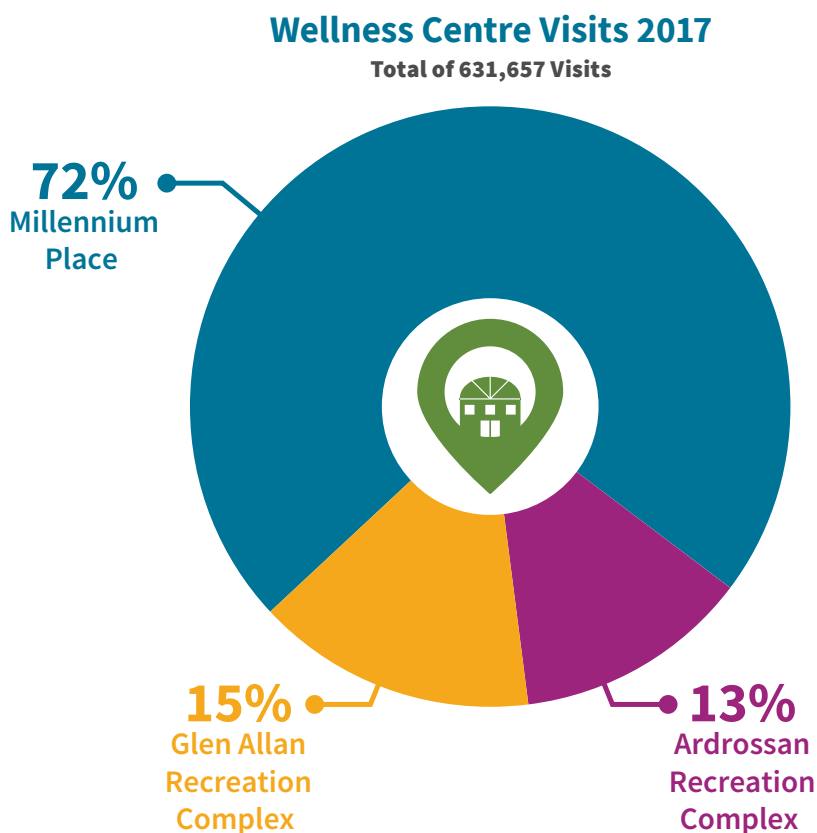


#### Outdoor Programs - SWC



## WELLNESS CENTRES

The three fitness centres accommodated over 630,000 visits in 2017 which is an average of 1,731 visits per day. Millennium Place recorded 456,260 visits (72% of total).



## COMMUNITY EVENTS

Canada Day is Strathcona County's largest of the seven community festivals. Approximately 300 volunteers help out on Canada Day and 25,000 people attend.

ANNUAL EVENTS	MONTH	ESTIMATED ATTENDANCE	VOLUNTEERS
EGTP Winter Play Day	February	600	8
Arbor Day	May	1,200	6
Spring Play Day	June	700	8
Canada Day Festival	July	25,000	300
Summer Play Day	July	1,000	8
Celebration of Lights	November	7,500	50
New Year's Eve Festival	December	10,000	100
<b>Total</b>	-	<b>46,000</b>	<b>480</b>

## ICE ARENAS

There are eleven sheets of ice in the County. A total of 396 ice weeks are provided, including three arenas, Millennium Place and Glen Allan, which offer summer ice.

### Number of Weeks with Ice

2018-19 Ice Season

#### Glen Allan Recreation Complex



#### Millennium Place - Sprite Arena



#### Millennium Place - Chevrolet Arena



#### Ardrossan Recreation Complex - McMillan East



#### Sherwood Park Arena



#### Sherwood Park Sports Centre



#### Strathcona Olympiette Centre - Main



#### Ardrossan Recreation Complex - West



#### Moyer Recreation Centre



#### Broadmoor Arena



#### Strathcona Olympiette Centre - Small



Overall prime time ice utilization is 93%. Sherwood Park Sports Centre and Sherwood Park Arena are at 100% capacity during prime time and seven other arenas are above 90%. Over 1,000 hours of prime time ice remains unused, two-thirds of which is available at Broadmoor Arena and the small surface at Strathcona Olympiette Centre.

## Prime Time Ice Utilization

2018-19 Ice Season

Sherwood Park Sports Centre



Sherwood Park Arena



Ardrossan Recreation Complex - McMillan East



Millennium Place - Chevrolet Arena



Millennium Place - Sprite Arena



Strathcona Olympiette Centre - Main



Ardrossan Recreation Complex - West



Glen Allan Recreation Complex



Broadmoor Arena



Moyer Recreation Centre



Strathcona Olympiette Centre - Small





The three minor hockey associations account for 60% of booked hours.

## Number of Booked Hours by Organization

2018-19 Ice Season



Sherwood Park  
Minor Hockey  
**6,872**  
(42%)



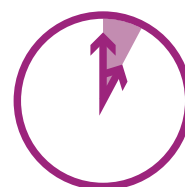
Strathcona Minor  
Hockey Association  
**2,768**  
(17%)



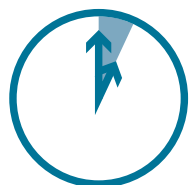
Sherwood Park  
Ringette Association  
**1,360**  
(8%)



County Learn to  
Skate Programs  
**1,332**  
(8%)



Adult  
Casual Bookings  
**1,284**  
(8%)



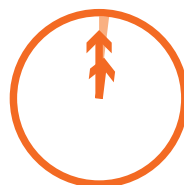
County Drop-In  
Recreation  
**1,113**  
(7%)



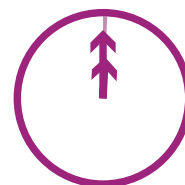
Sherwood Park  
Figure Skating  
**714**  
(4%)



Other Rentals  
**620**  
(4%)



Ardrossan  
Figure Skating  
**271**  
(2%)



Josephburg  
Minor Hockey  
**201**  
(1%)

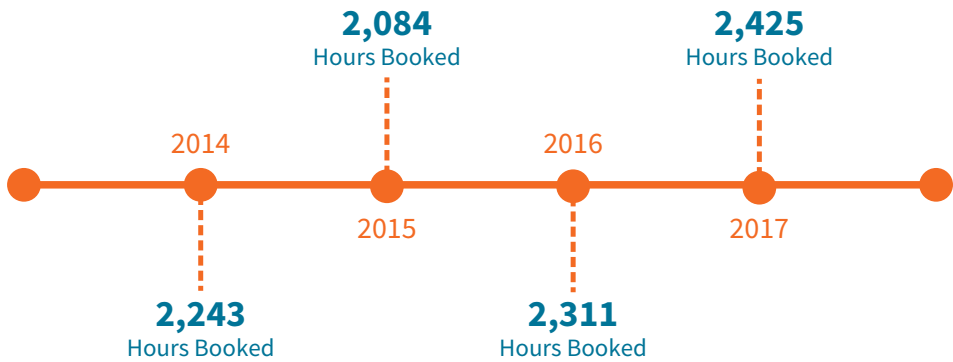
## INDOOR FIELDS

The indoor fields at Millennium Place have accommodated between 2,500 and 2,800 hours in each of the past 4 years.

TYPE OF USE	2014	2015	2016	2017
Daytime 3:30 - 5:30 p.m.	77	105	131	166
Daytime before 3:30 p.m.	340	347	334	307
League Game	708	748	836	710
League Practice	1,422	1,327	1,441	1,263
League Practice (1/2 field)	4	n/a	n/a	n/a
Summer with turf	16	15	7	1
No charge	100	236	11	64
<b>Total</b>	<b>2,666</b>	<b>2,777</b>	<b>2,759</b>	<b>2,511</b>

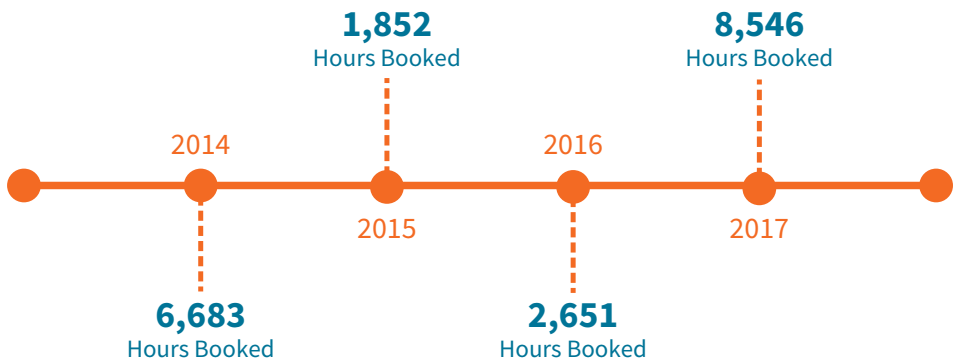
# DRY SURFACE ARENAS

Arenas are also booked for dry floor use when there ice is taken out for the summer. Over 2,400 hours were used in 2017.



# INDOOR RACQUET COURTS

Indoor racquet court use dropped in 2015 but were back up to over 8,500 hours in 2017.



## SPORTS FIELDS

Overall, the utilization of sports fields have decreased each year since 2014. Field Level C rentals accommodated over half (53%) of total booked hours in 2017.

TYPE OF USE	2014	2015	2016	2017
Artificial Turf Field - Adult	-	-	14	59
Artificial Turf Field - Youth	13	16	472	521
Field Level A - Adult	193	331	429	390
Field Level A - Tournament	157	274	325	195
Field Level A - Youth	378	431	773	677
Field Level B - Adult	44	64	77	118
Field Level B - Youth	2,529	1,807	1,872	2,363
Field Level C	9,637	11,212	9,142	7,643
Field Premier - Adult	59	58	2	6
Field Premier - Tournament	287	159	156	328
Field Premier - Youth	809	698	740	856
Field Rain Out - No Charge	99	142	277	581
No Charge	1,655	392	342	612
Reciprocal Use - No Charge	535	337	338	202
<b>Total</b>	<b>16,394</b>	<b>15,920</b>	<b>14,956</b>	<b>14,548</b>

## BALL DIAMONDS

The numbers of hours booked at ball diamonds has increased over the past four years. In 2017, 4,596 hours were booked; 41% of which were youth using Class B diamonds.

TYPE OF USE	2014	2015	2016	2017
Diamond Class A - Adult	19	47	13	8
Diamond Class A - Junior	-	2	-	-
Diamond Class A - Standard 90' Adult	16	-	-	-
Diamond Class A - Standard 90' Tournament	-	42	21	-
Diamond Class A - Standard 90' Youth	247	237	-	-
Diamond Class A - Tournament	63	63	28	58
Diamond Class A - Youth	259	295	1,161	867
Diamond Class B - Adult	64	46	41	76
Diamond Class B - Youth	1,014	1,384	1,793	1,868
Diamond Class C	927	887	942	1,149
Diamond Rain Out - No Charge	55	57	137	138
No Charge	932	102	198	421
Reciprocal Use - No Charge	50	17	22	13
<b>Total</b>	<b>3,646</b>	<b>3,179</b>	<b>4,355</b>	<b>4,596</b>

# 3 KEY FINDINGS

## INDOOR SPACES

Strathcona County's indoor recreation and culture assets have a modernized replacement value of over \$400 million. There are approximately 60 publicly supported indoor recreation and culture spaces in the County including:



**3 aquatics facilities**



**3 fitness centres**



**7 ice arena facilities (11 ice sheets)**



**Wilderness centre**



**Performing arts theatre**

## OUTDOOR SPACES

The modernized replacement value of outdoor infrastructure in the County is approaching \$100 million. Strathcona County offers nearly 2,000 hectares of open space, 280 km of trails, and over 450 outdoor recreation and sport spaces including:



**147 playgrounds**



**105 sports fields**



**75 ball diamonds**



**29 outdoor rinks**



**21 pickleball courts**



**9 beach volleyball courts**



**2 year-round dog parks**



## COMMUNITY-OPERATED SPACES

Many facilities are operated through agreements with community groups, including:



**14 community halls**



**3 seniors centres**



**3 curling rinks**



**Museum**

## UTILIZATION

Community facilities accommodate over 1.2 million visits a year, including:



**630,000+ annual fitness centre visits**



**Prime time ice utilization is at 93%.  
Over 1,000 hours of prime time remains  
available for rent.**



**14% of residents have a Millennium Card**



**3,500 annual museum visits**



**18,000 annual art gallery visits**



**85 annual performances**



**22,110 annual performance attendance**



Festival Place





