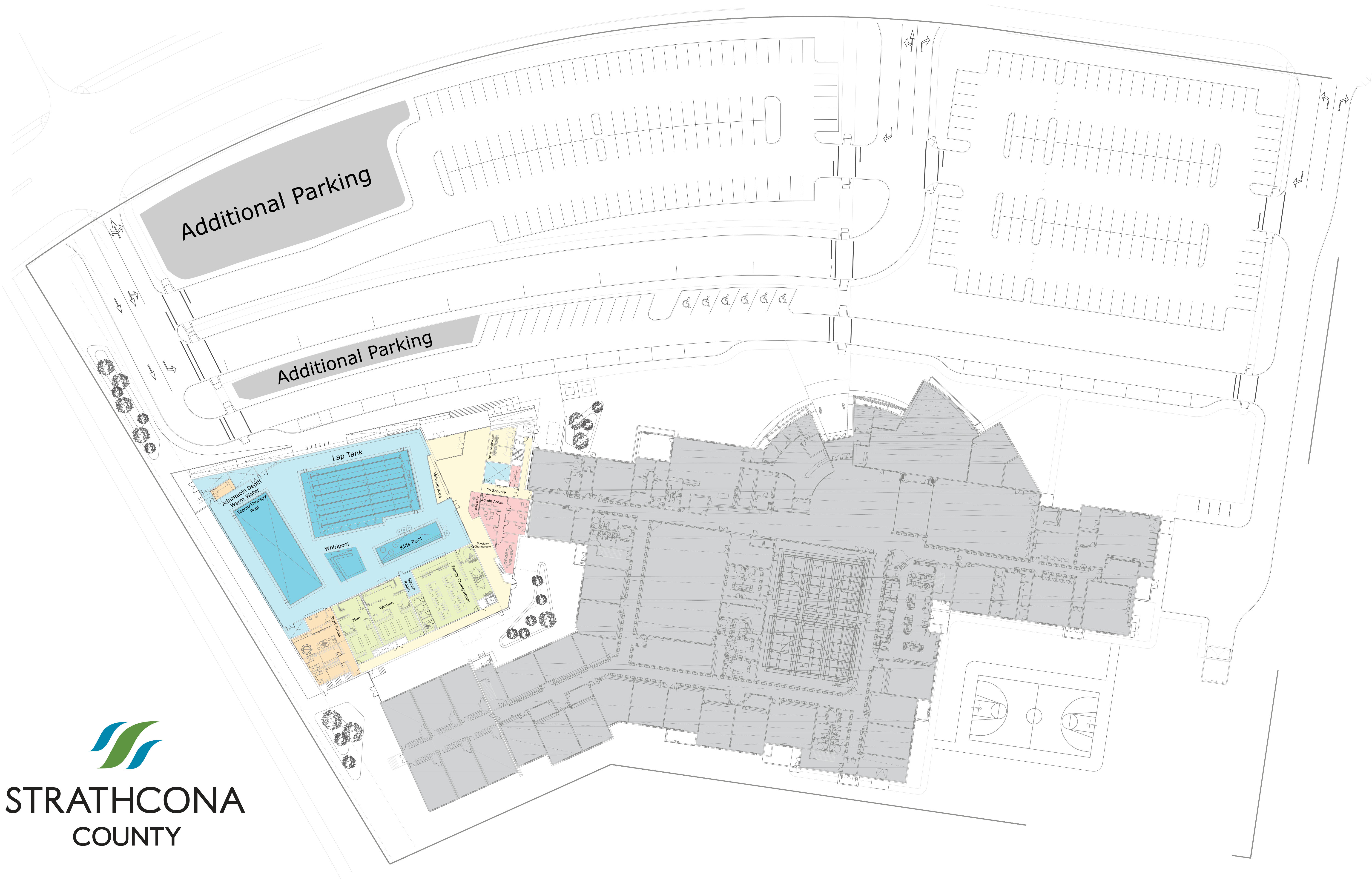


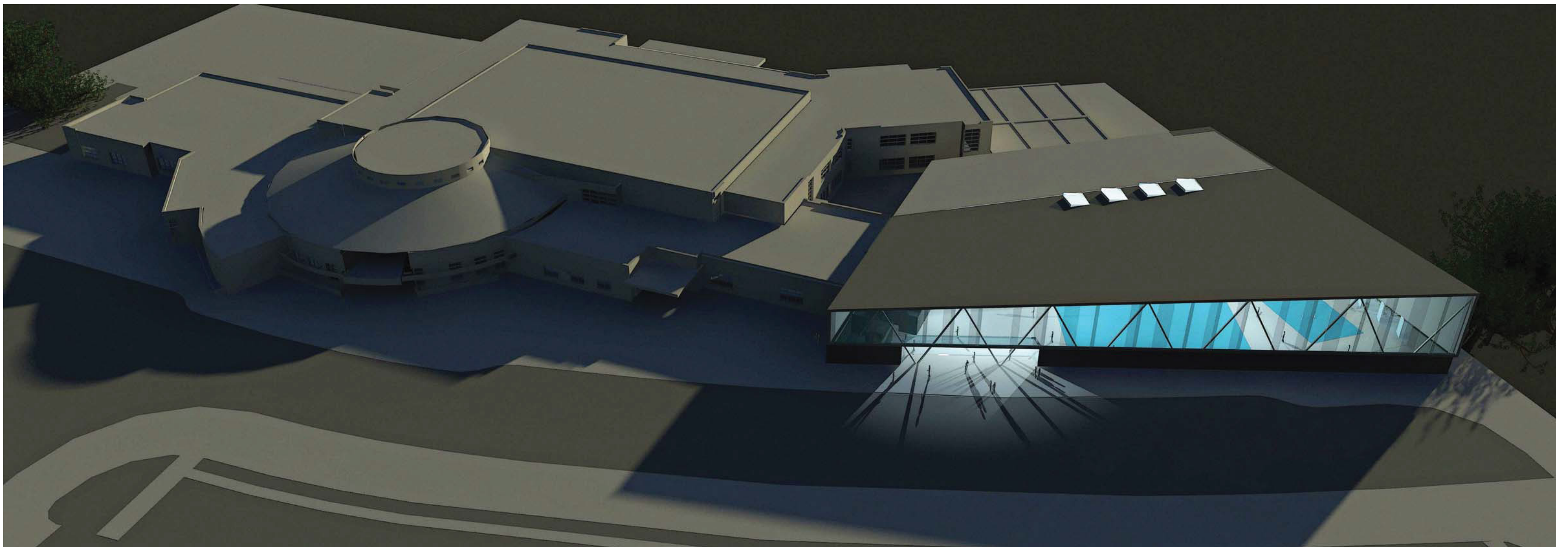
STRATHCONA
COUNTY

Emerald Hills Regional Park

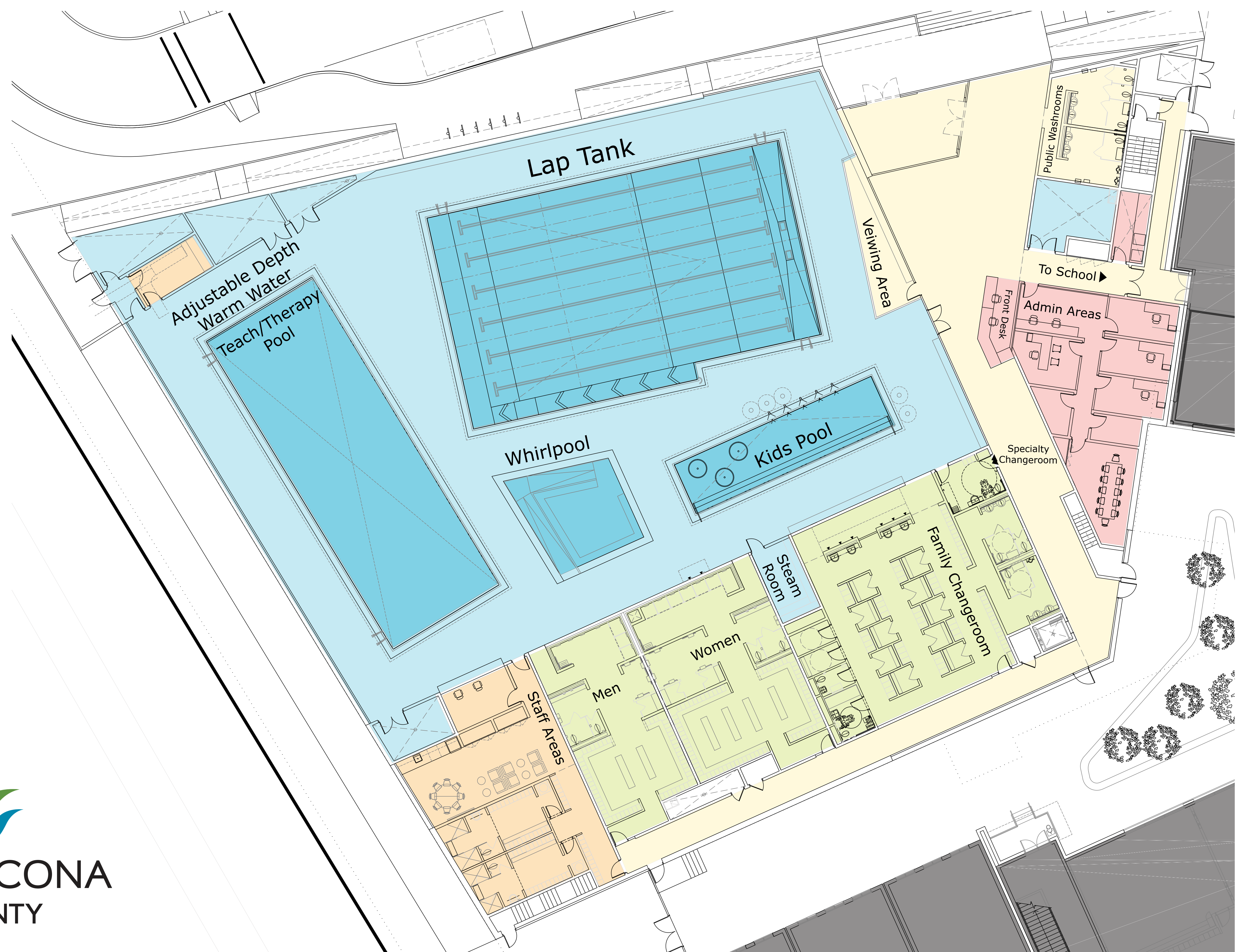
Emerald Hills Aquatic Centre and Archbishop Jordan High School



Exterior Renderings



Emerald Hills Aquatic Centre - Main Floor Plan



STRATHCONA
COUNTY

What is the Emerald Hills Aquatic Centre?

- A facility focused on enhanced accessibility for ALL users
- 6 lane, 25m lap pool with ramp entry
- 4 lane, 25m warmer water teach / therapy pool with adjustable depth
- Kids shallow teach pool
- Whirlpool with ramp entry
- Steam room
- Male & female change rooms sized similar to those at KLC
- Family change rooms DOUBLE the size of the male/female change rooms at KLC
- Additional specialty change room
- Physical link to ABJ high school allows for shared use of facilities for programs
- Part of the larger Emerald Hills Regional Park, which will include an artificial turf field, soccer & baseball diamonds, as well as trail linkages.

Key accessibility features specific to Emerald Hills Aquatics Centre:

- Ramp into cooler lap pool as well as into hot tub
- Zero depth entry capability into warmer water teach / therapy pool
- No mechanical lifts
- Specialty change room separate from male / female / family, with direct access from lobby onto pool deck
- Roman style entry doors (with appropriate angles for turning all mobility devices)
- Accessible parking immediately in front of facility doors, shorter lobby distance to minimize challenges getting from vehicle to activity location
- Accessible public washrooms in lobby area
- Additional accessible toilets and shower areas in male, female & family change areas

Notable facility tidbits:

- Will be another facility included on the Millennium Card
- Intent is to move older adult aquatic programming to this facility due to the enhanced accessibility and more appropriate water temperatures
- Additional aquatic rehab / therapy programs will become available in these more appropriate spaces
- A full complement of preschool and Red Cross swimming lessons will be available at both this facility and KLC
- 2 dedicated lanes at all times of day will be available for spontaneous lap swimming
- Preschool recreational swim will be offered with extended times at both KLC and Emerald Hills
- Partnering with ABJ school means that facility users will have access to coffee and food services and social spaces before / after their programs
- Students will have access to the pool between program times to enhance their physical education curriculum
- Swim clubs will have additional practice time available in the new lap tank
- Will be the new site for aquatic leadership programs and clubs, enabling the program to grow

Timelines:

- Construction to begin in early spring 2014, requiring approximately 20 months
- Additional public engagement to take place in 2014 & 2015 to help plan for operational changes throughout all aquatic facilities
- Expected facility operations 2016
- KLC will have an extended shutdown after EH is fully operational in order to allow for that facility's revitalization and family change room addition

Interior Renderings



Interior Renderings

