

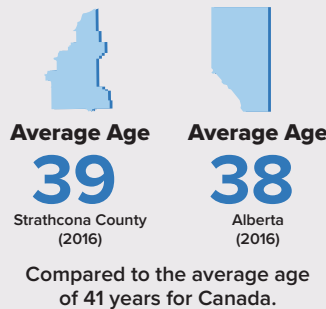
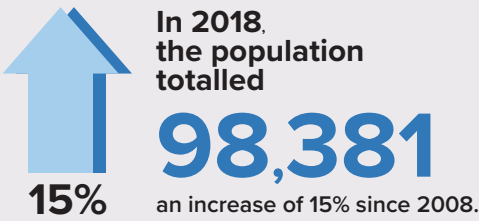
# Strathcona County

# Community Trends

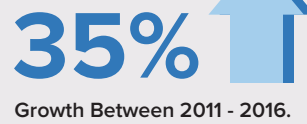
Set in the centre of Alberta's energy and agricultural heartland, Strathcona County is a vibrant specialized municipality – a perfect blend of urban and rural living. Strathcona County is made up of over 1,200 square kilometers that include hamlets, acreages, urban neighbourhoods and rural and industrial lands.



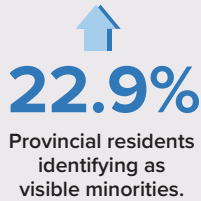
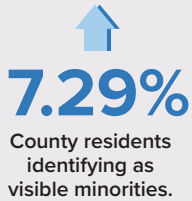
## Community Profile



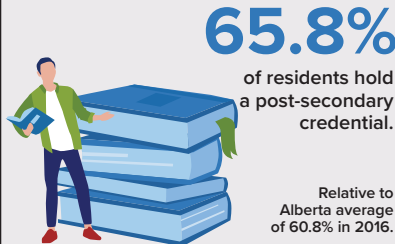
The County has an increasing proportion of older residents.



Diversity is increasing and is still relatively low compared to provincial average.



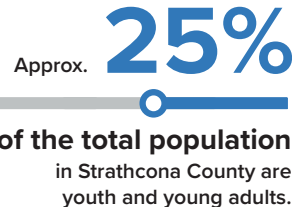
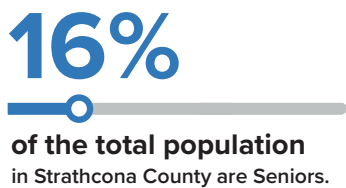
Population is highly educated.



Growth Between 2005 - 2018



## Population Profile



Seniors occupy greater than **1/3** of single occupied single family homes.

A sizeable proportion of seniors live independently in their own homes.



Youth and young adults rank **mental health** as the top issue of importance in their lives.

**1/4**

of seniors live in rural areas.



Programs and services youth and young adults access most:

**73%** of youth accessed outdoor parks and trails.

**78%** of youth accessed indoor sports and recreation.

**61%** of youth accessed outdoor sports and recreation.



### Seniors

### Youth and Young Adults

# Community Vitality, Belonging, and Safety

**89.8%**

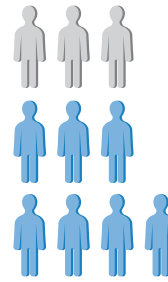
of residents agree that Strathcona County is a safe place to live or visit.



**Crime rate**  
in urban Strathcona County, almost 40% less than Alberta crime rate.



Urban Strathcona County crime rate (6,096)  
(per 100,000 population, 2019)



**7/10**

residents feel there is currently a strong sense of belonging and connection in the community.

## Economic Well-Being and Living Standards



**72%** labour force participation rate close to the provincial average.



**14%**

of residents are spending

**30%**

or more of their income on housing costs.

Strathcona County Average

Alberta Provincial Average



Cost to own a home is high compared to the rest of the province.

Median Household Income:

**\$133,786**



Relative to the Alberta median of \$102,493.

## Health and Wellness

**Average Life Expectancy**



Residents have good overall health as reflected by a relatively high average life expectancy.

**Mental Health**

**35%** increase in participants accessing Solutions Navigation Services (between 2019-2020).



**125** families (149 adults and 224 children) served through 1:1 parenting support in Family Resource Network 2020/21 reporting year.

**Smoking Is Decreasing**

**18.5%**



(2016)

**15.1%**



(2017)

**Residents Are Increasingly Active**



**20.4%**

(2013 - 2017)