

FOR SALE

Sherwood Park Commercial

SHERWOOD PARK, AB



The Sherwood Park Commercial Lands are located off the Anthony Henday Ring Road and are a mixture of C2 and C5 zoning. Sherwood Park is located 5 minutes east of Edmonton and has a strong economy with over \$9 billion worth of major projects completed, announced, or under construction.



780 486 3919 | www.tag.ca

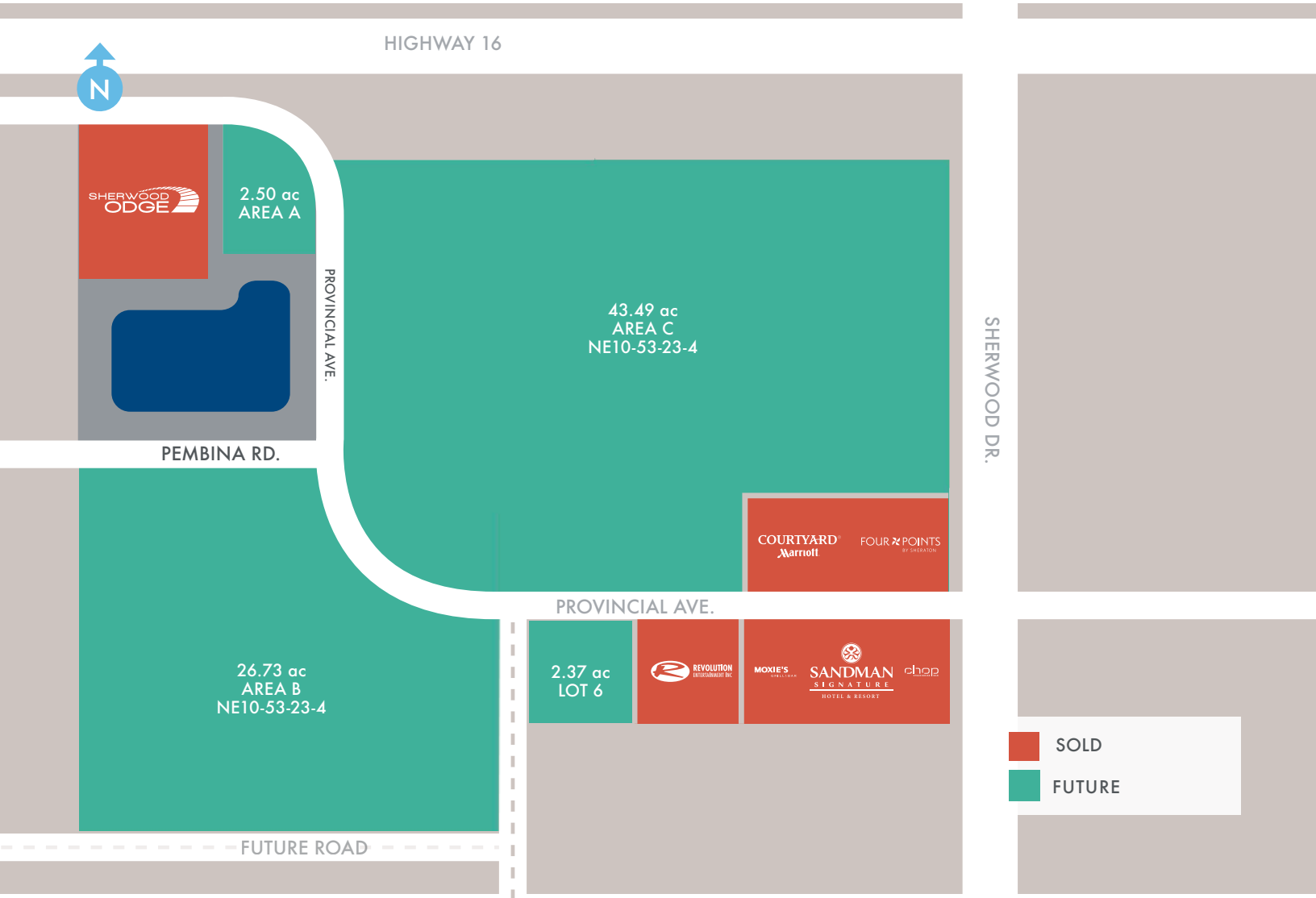
Contact Mark Tanasichuk at 780 486 3977 or mtanasichuk@tag.ca for more information.

MARKED FOR SUCCESS SINCE 1971.

FOR SALE

Sherwood Common

SHERWOOD PARK COMMERCIAL



Area	Zoning	Area (AC)	Price / AC
Lot 6, Blk 248, Plan 1425559	C2	2.37	Market
A	C5	2.50	Market
B	C2	26.73	Market
C	C2	43.49	Market

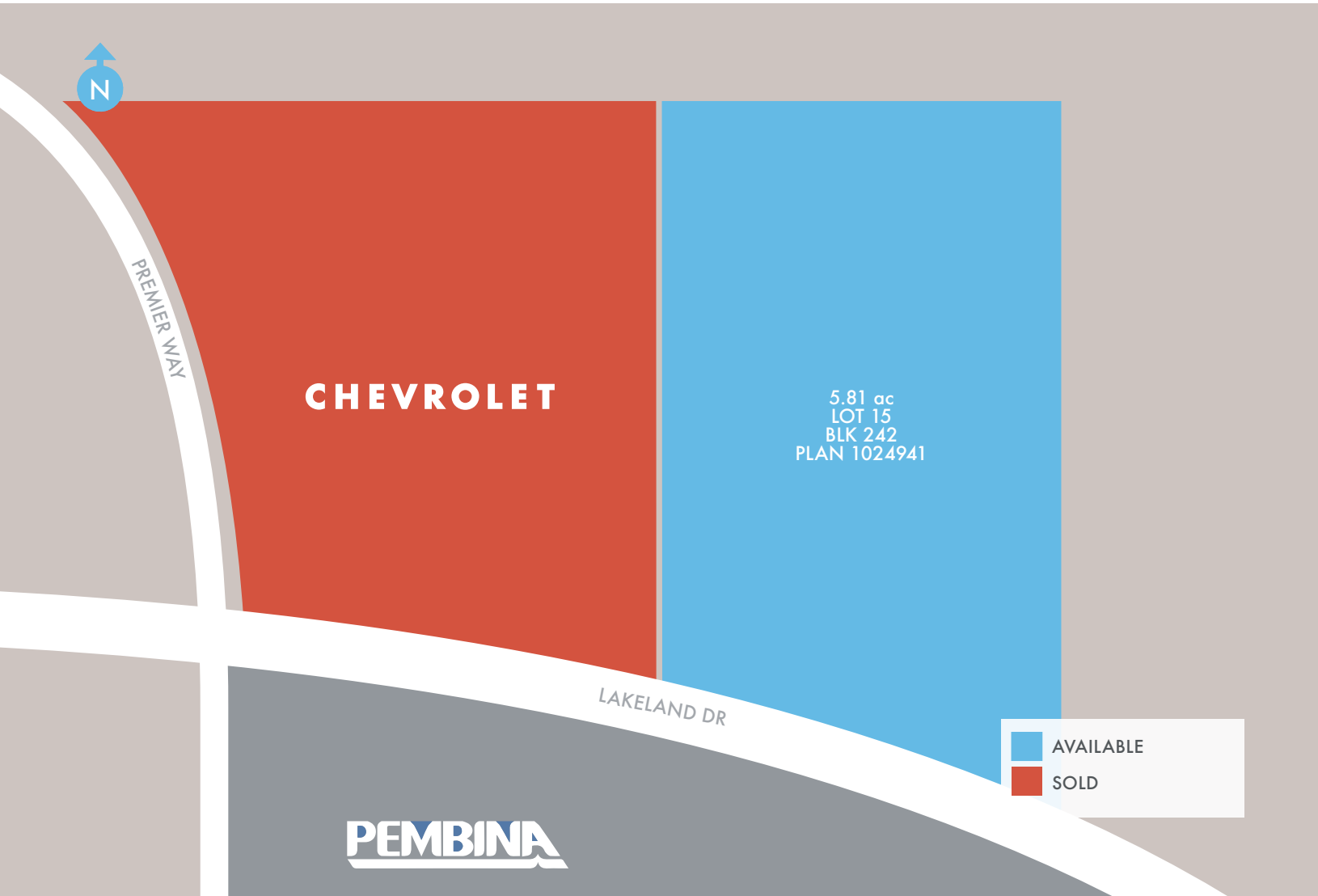


780 486 3919 | www.tag.ca

FOR SALE

Lot 15

SHERWOOD PARK COMMERCIAL



Lot	Zoning	Area (AC)	Price / AC
Lot 15	C5	5.81	Market

- Located next to Millennium Place
- Access off Lakeland Drive and Premier Way
- Fully serviced

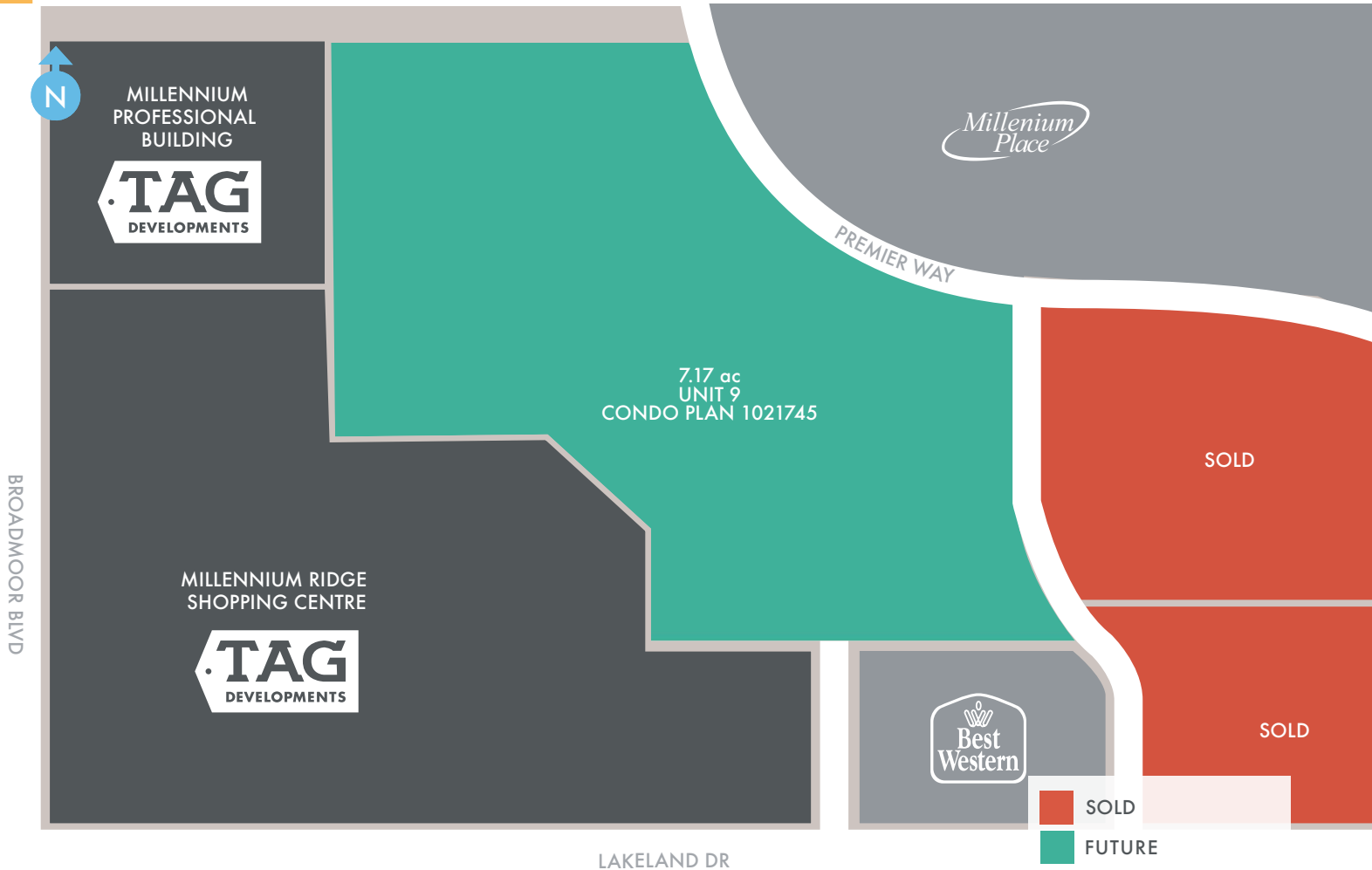


780 486 3919 | www.tag.ca

FOR SALE

Millennium Ridge Lands

SHERWOOD PARK COMMERCIAL



Lot	Zoning	Area (AC)	Price / AC
Unit 9	C2	7.17	Market

- Located within Millennium Ridge Shopping Centre at the northeast corner of Broadmoor Boulevard and Lakeland Drive
- Can accommodate 180,000 SF office/commercial project
- Fully serviced

This document/email has been prepared by TAG Developments for advertising and general information only. TAG Developments makes no guarantees, representations or warranties of any kind, expressed or implied, regarding the information including, but not limited to, warranties of content, accuracy and reliability. Any interested party should undertake their own inquiries as to the accuracy of the information. TAG Developments excludes unequivocally all inferred or implied terms, conditions and warranties arising out of this document and excludes all liability for loss and damages arising there from. This publication is the copyrighted property of TAG Developments. All rights reserved. Date of publication: June 21, 2017



780 486 3919 | www.tag.ca

Contact Mark Tanasichuk at 780 486 3977 or mtanasichuk@tag.ca for more information.

MARKED FOR SUCCESS SINCE 1971.