

SURVEY SAYS ...



Strathcona County 2016 Public Survey Research Results

Report prepared by Phil Kreisel, Ph.D.
Corporate Planning and Intergovernmental Affairs

March 2017

TABLE OF CONTENTS

I	INTRODUCTION AND PURPOSE OF THE STUDY	1
II.	METHODOLOGY	1
	A. The questionnaire.....	1
	B. Sampling design and data collection procedure.....	1
III.	RESULTS	2
	A. Demographic overview	2
	B. Quality of life in Strathcona County	3
	C. Adults in neighborhood known by respondents.....	5
	D. Awareness levels of aspects and services in Strathcona County	6
	E. User rates for selected municipal services in Strathcona County	7
	F. Level of satisfaction for selected municipal services in Strathcona County.....	8
	G. Assessment of County communication and information services	9
	H. Assessment of County communication and information services	10
	I. Strathcona County as a place to live	11
	J. Open-ended questions	11
	APPENDIX A: QUESTIONS ASKED IN THE PUBLIC SURVEY	14

I. INTRODUCTION AND PURPOSE OF THE STUDY

In December 2016, Strathcona County conducted a survey of its residents to obtain perceptions on the quality of life of residents living in Sherwood Park and rural areas of Strathcona County. This survey has been done annually since 1998 as the annual satisfaction survey. The main purpose of this research is to identify and measure a series of factors (or impact of County services) that contribute to a person's satisfaction with the quality of life in Strathcona County. The concept of the survey has expanded to include awareness measurement of County programs and services, as well as the usage of selected County services.

Obtaining primary data directly from residents provides Strathcona County departments with information, and enables County officials to make decisions that accurately reflect the perspectives and attitudes of residents. This report provides a comprehensive review of all steps undertaken in the development and implementation of the survey, as well as a detailed summary of the results. An executive summary, highlighting overall findings is available as a separate document.

A review of the methodology associated in the development and implementation of the survey can be found in the next section of this report.

II. METHODOLOGY

A. The questionnaire

The questionnaire used in this study was extensively revised compared to the one used for the past 15 years. A portion of the questions from previous surveys were retained to allow valid comparisons with the previous year (see Appendix A for a copy of the full questionnaire), particularly in measuring satisfaction that residents had with particular services.

B. Sampling design and data collection procedure

Two methods of data collection were used for this year's survey. The first method was the traditional telephone method that has been used in previous years, where 400 residents aged 18 or older were contacted by Banister Research.¹ Data from the telephone survey was collected between December 5 and 9, 2016.

The second method was an online questionnaire where residents could choose to participate. The only criterion was that respondents had to live in Strathcona County. The online survey ran between December 5, 2016 and January 8, 2017, during which 1,056 residents took part in the survey.²

¹ The sample frame incorporated a statistical proportion estimate of 0.5, which assumes that there is a homogeneous mixture of attitudes and opinions about the quality of life in Strathcona County. A 95% confidence interval was established for this study, which is standard for any public opinion study that utilizes a random sample of residents. Overall, 70% of responses came from people living in Sherwood Park, while the remaining 30% were drawn from residents living in various parts of rural Strathcona County.

² It should be noted that for open-ended questions, many residents chose not to provide insight into County issues, even though they had an opportunity to do so.

The sample frame for the telephone survey provided overall results accurate to within $\pm 4.9\%$, 19 times out of 20. When the online data was folded in with the telephone sample, the new dataset provided results accurate to within $\pm 2.5\%$, 19 times out of 20.³

The data was analyzed by Strathcona County's Corporate Planning and Intergovernmental Affairs using SPSS for Windows.

III. RESULTS

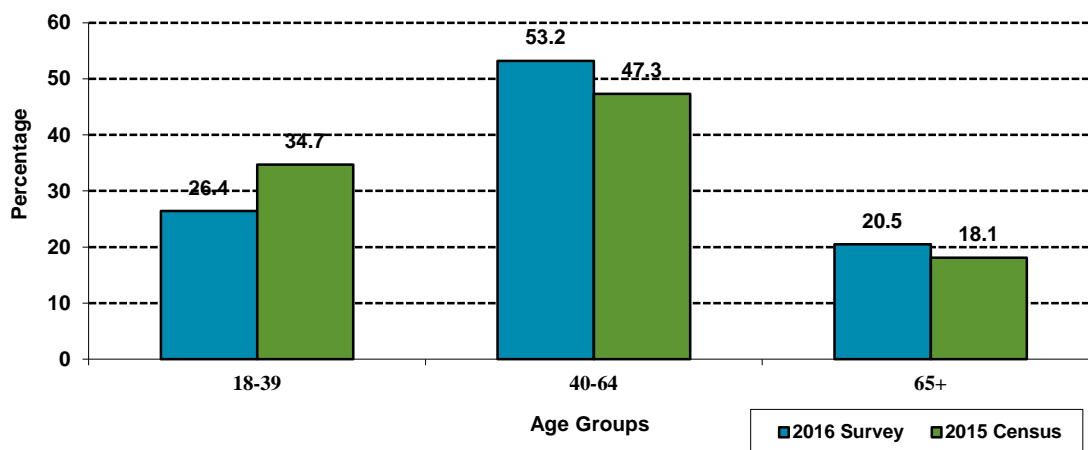
This section of the report presents a summary of the results associated with the perceptions and awareness of residents. Socio-demographic comparisons, where significant, are also highlighted. Comparisons will also be made with data collected from the previous year's survey, when significant differences occur.

A. Demographic overview

This section of the report presents an overview of the type of residents who were surveyed in 2016. As indicated in the previous section of this report, part of the sampling criteria from the telephone methodology was to survey County residents. Although sampling criteria for obtaining a 70/30 split between urban and rural residents was not enforced for either the telephone or online survey, the final urban/rural split was fairly close to the actual proportions, with 75.8% of the respondents being from Sherwood Park and the remaining 24.2% living in rural Strathcona County. Almost all of the people who took part in the survey were homeowners (94.1%), while the remaining residents were renters.

A breakdown of the age of the respondents is shown in Figure 1. There was a relatively good representation from most age groups, though in comparison to the 2015 municipal census, the study data for 18-34 year age group was slightly under-represented.

FIGURE 1
Age of respondents



³ The $\pm 2.5\%$ is the *margin of error* associated with this study and refers to the potential percentage spread that exists within answers to particular questions. This means that an answer could be up to 2.5% higher or lower than what is reported.

Approximately 63% of survey respondents did not have any children under the age of 18 living at home, while the remaining 37% had at least one child living at home. In addition, 46% of respondents indicated at least one adult in the household who worked somewhere within Strathcona County.

B. Quality of life in Strathcona County

A series of questions pertaining to the quality of life in Strathcona County were asked in this year's study. A summary of the overall results to these questions is presented in Table 1.

Table 1
Rating the quality of life in Strathcona County

	Excellent		Very Good		Good		Fair		Poor	
	%	N	%	N	%	N	%	N	%	N
Rating Strathcona County:										
As a place to raise children	45.6	655	35.1	503	14.8	212	3.5	50	1.0	15
Overall as a place to live	40.7	589	36.5	528	16.2	234	5.5	80	1.0	15
In terms of personal safety	34.0	493	38.4	556	20.4	295	6.2	90	1.0	14
As a place to retire	30.7	439	30.8	440	22.9	327	10.2	146	5.3	76
Value received in municipal services for the tax dollar	16.4	237	29.7	428	29.6	427	16.0	231	8.3	119

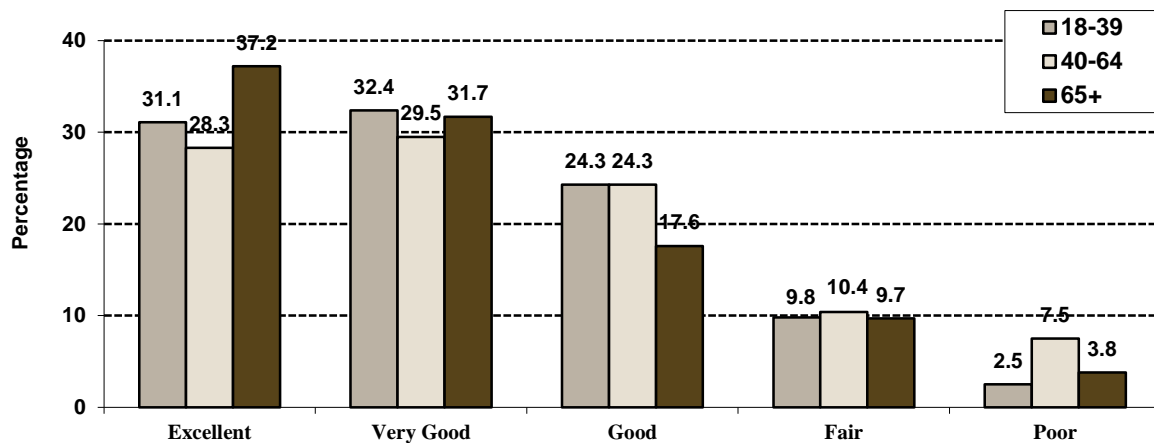
Overall, the majority of respondents gave Strathcona County high ratings *for being a place to raise children* (95.5% \geq Good) and *overall as a place to live* (76% \geq Good). *Personal safety* (93% \geq Good) and *being a place to retire* (84.5% \geq Good) also received positive ratings. The lowest overall ratings came with perceptions as to the *value received in municipal services for the tax dollar spent* (76% \geq Good).

Through statistical analysis, it was determined that people living in the rural portion of Strathcona County gave each item statistically significant lower ratings compared to those living in Sherwood Park. This was confirmed through a series of t-tests and chi-square analysis.⁴ Although significant differences in the rural and urban populations were seen for each item from Table 1, the strongest difference occurred when residents rated the value of municipal services for the tax dollar spent.

⁴ Graphs depicting statistically significant differences between urban and rural respondents is available upon request.

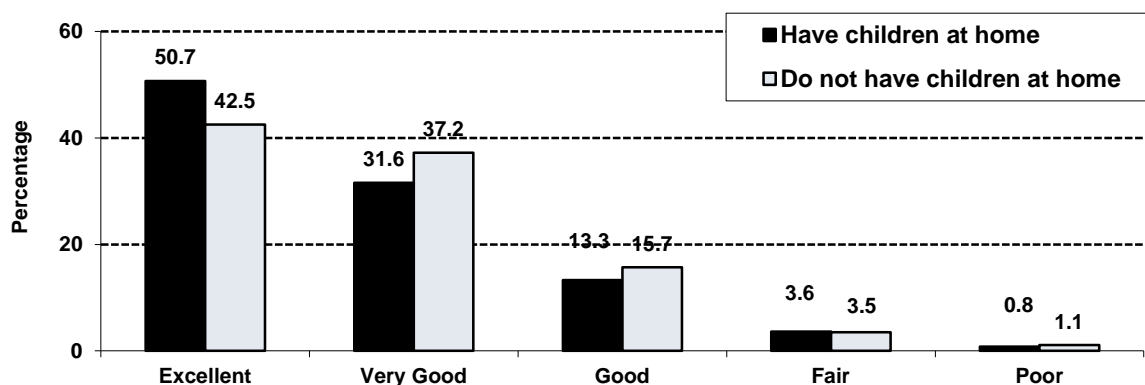
A comparison of the age group of the respondent was done for each item; however, the only item where there were any significant differences was Strathcona County as a place to retire (Figure 2). Looking at a combined fair/poor rating, 17.9% of residents in the 40-64 age bracket rated this as fair/poor, compared to 12.3% of residents aged 18-39 and 13.5% of residents aged 65 or older.⁵

FIGURE 2
Strathcona County as a place to retire (Age group comparisons)



A comparison between whether or not there were children in the household was done for the question pertaining to how residents perceived Strathcona County as a place to raise children. It can be seen from Figure 3 that those who had children in the household had a slightly higher positive attitude toward this than those who did not.

FIGURE 3
Strathcona County as a place to raise children

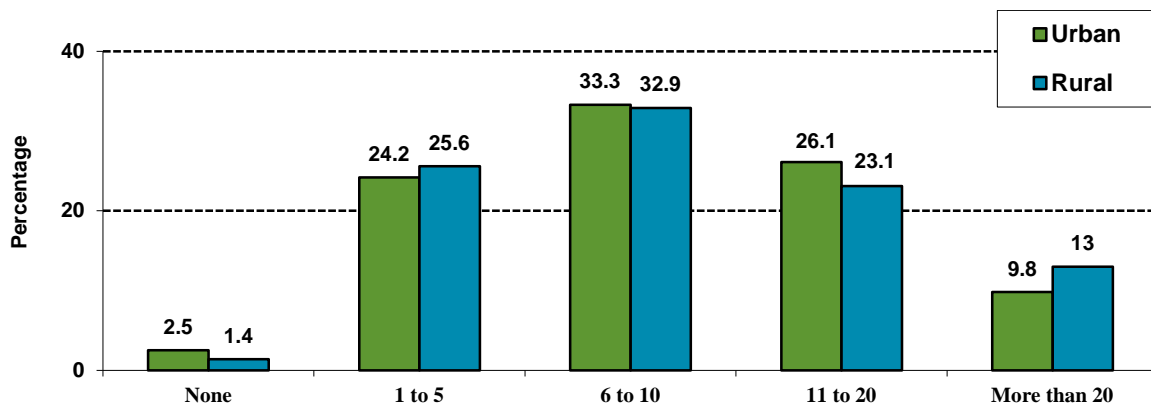


⁵ Graphs depicting statistically significant differences between age groups for additional questions from this survey is available upon request.

C. Adults in neighborhood known by respondents

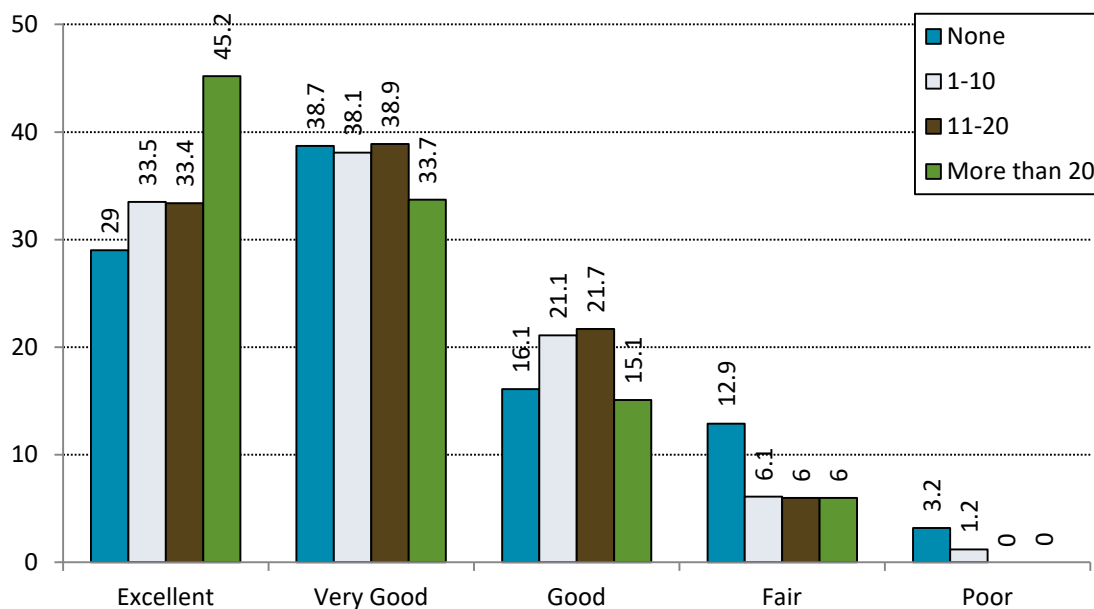
Respondents to the survey were asked to indicate the number of adults they know by name within their neighbourhood. The results are shown by urban and rural splits for 2016. There was no statistical difference seen between urban and rural residents. Furthermore, this year’s results are similar to what has been seen in previous years when this question has been asked.

FIGURE 4
Number of adults known by name within one’s neighborhood
Urban and rural comparisons



A comparison between the how many neighbours residents knew by name with perceptions of safety is shown in Figure 5. It was found that positive perceptions of personal safety were higher among residents who knew more neighbors.

FIGURE 5
Perceptions of personal safety based on how many neighbours are known by name



D. Awareness levels of aspects and services in Strathcona County

A series of questions pertaining to the awareness of different aspects and services pertaining to Strathcona County were asked in this year's study. A summary of the overall results to these questions is presented in Table 2, organized on the basis of the *very aware* rating.

Table 2
Rating the awareness of aspects associated with Strathcona County

Extent of Awareness:	Very Aware		Moderately Aware		Slightly Aware		Not at all Aware	
	%	N	%	N	%	N	%	N
That Emergency Services is an integrated fire and emergency medical service	53.8	779	26.2	379	12.9	186	7.1	103
Of the Strathcona County alert system	33.6	486	24.0	347	21.6	313	20.7	300
That Strathcona County's financial information is available on the web	17.5	253	24.3	351	24.2	350	34.0	491
That the natural terrain in the east and south areas of Strathcona County are part of a UNESCO Biosphere	15.0	217	12.0	174	15.3	221	57.6	833
The decision-making role of Council	13.9	201	28.0	404	32.3	466	25.8	373
The Boards and Committee recruitment process	5.3	77	11.5	166	21.7	313	61.5	888

Overall, the majority of respondents had strong awareness levels of the *integrated fire/medical aspect associated with Emergency Services*. There was also adequate awareness of the *Strathcona County Alert system* (when the very aware/moderately aware figures were combined). There were considerably lower levels of awareness noted for the remaining aspects measured in this year's public survey.

Respondents living in the rural portion of Strathcona County had lower awareness compared to those living in Sherwood Park for *Emergency Services integration* and the *Strathcona County Alert system*. The relationship between these items and the location of one's residence was confirmed through a chi-square analysis.

A comparison of the items based on the age groups of the respondents determined that there was a relationship between the age of the respondent and all six aspects shown in Table 2. For each aspect, it was found that awareness of the aspect or service increased as the age of the respondent increased.

E. User rates for selected municipal services in Strathcona County

A series of questions pertaining to the use of particular municipal services pertaining to Strathcona County were asked in this year's study. A summary of the overall results to these questions is presented in Table 3, based on frequency of use.

Table 3
Ranking the use of selected Strathcona County municipal services

	Frequently use it		Sometimes use it		Never used it	
	%	N	%	N	%	N
An indoor recreation facility	43.9	637	38.6	561	17.5	254
Outdoor spaces in Strathcona County	39.0	567	44.0	639	16.9	246
Strathcona County Library	33.1	480	44.0	544	16.9	428
Broadview Enviroservice Station	29.3	424	48.7	704	22.0	318
Strathcona County Alerts	26.7	382	20.9	299	52.4	749
Strathcona County Transit – Commuter services	6.5	94	14.7	213	78.8	1,140
Strathcona County Transit – Local services	5.6	82	12.9	188	81.4	1,182
Strathcona County Transit – Special events	3.0	43	22.6	328	74.4	1,078
Strathcona County Transit – Mobility services	0.7	10	2.0	29	97.3	1,409

Overall, the majority of respondents made use of indoor recreation facilities and various outdoor spaces throughout Strathcona County. Just under 80% of residents visited the *Strathcona County Library* or the *Broadview Enviroservice Station* to some extent.

Services that were used less frequently by residents included the *Strathcona County Alerts* and the various transit offerings.

In all but one service,⁶ the selected municipal services were used more frequently by those living in Sherwood Park than those living in rural parts of Strathcona County.

The use of the services decreases as the age of residents increases for: *indoor recreation facilities*, *outdoor spaces* and to a lesser extent, with the use of *commuter and local transit services*. The use of the *Broadview Enviroservice Station* increases as the age of residents increases. Finally, *Strathcona County Alerts* were used more by those aged 40 to 64 years than the other age groups. The remaining services (*Library*, *mobility transit services* and *special event transit services*) did not show any significant differences in terms of age.

⁶ No relationship between urban and rural residents was seen for the use of *mobility transit services*.

F. Level of satisfaction for selected municipal services in Strathcona County

A series of questions pertaining to residents' level of satisfaction with Strathcona County municipal services is presented in Table 4. Overall, residents were satisfied with the listed municipal services provided.

Table 4
Level of satisfaction for selected Strathcona County municipal services

	Very Satisfied	Satisfied	Slightly Satisfied	Slightly Dissatisfied	Dissatisfied	Very Dissatisfied
Urban street maintenance the past summer	19.4% (N=278)	50.2% (N=718)	17.0% (N=243)	6.4% (N=91)	3.9% (N=56)	3.1% (N=44)
Rural street maintenance the past summer	12.0% (N=161)	49.1% (N=661)	19.9% (N=267)	9.3% (N=125)	4.6% (N=62)	5.1% (N=69)
Various Strathcona County water services	27.0% (N=364)	52.8% (N=711)	10.5% (N=142)	4.2% (N=57)	2.4% (N=32)	3.0% (N=40)
Strathcona County sewage services	26.7% (N=353)	54.9% (N=725)	10.0% (N=132)	3.3% (N=44)	2.2% (N=29)	2.9% (N=38)
Strathcona County Green Routine	40.0% (N=563)	38.3% (N=539)	9.4% (N=133)	5.4% (N=76)	3.6% (N=50)	3.3% (N=47)
Strathcona County outdoor spaces	34.7% (N=487)	48.9% (N=686)	11.7% (N=164)	2.1% (N=30)	1.5% (N=21)	1.1% (N=16)
Strathcona County indoor recreation facilities	31.9% (N=442)	50.6% (N=702)	11.8% (N=164)	3.1% (N=43)	1.7% (N=23)	0.9% (N=12)
Strathcona County cultural facilities	24.2% (N=329)	51.1% (N=695)	19.1% (N=260)	3.5% (N=47)	1.1% (N=15)	1.1% (N=15)
Strathcona County Transit Services	12.7% (N=147)	48.2% (N=556)	19.1% (N=220)	9.4% (N=108)	5.4% (N=62)	5.2% (N=60)
Strathcona County Library	44.5% (N=585)	42.1% (N=554)	9.5% (N=125)	2.0% (N=26)	0.8% (N=10)	1.2% (N=16)

Satisfaction with *rural road maintenance in the summer, water services, sewage services and the green routine* was higher among urban residents compared to rural ones.

With respect to age group differences, the degree of satisfaction was higher among residents aged 65 or older compared to younger residents for *cultural facilities* and to a lesser extent, *the Strathcona County Library*.

G. Assessment of County communication and information services

Residents were also asked about how the County communicates with its residents. The overall results are shown in Table 5. It can be seen that the majority of respondents are satisfied with the County website as a source of information (89.7% combined satisfaction scores). The combined satisfaction scores for the remaining two aspects of communication were lower: *being informed about County services and activities* had a combined score 81.7%., while having *opportunities to express opinions about municipal services and/or issues* was 78.5%.

Table 5
Level of satisfaction with Strathcona County information services

	Very Satisfied	Satisfied	Slightly Satisfied	Slightly Dissatisfied	Dissatisfied	Very Dissatisfied
Strathcona County website as a source of information	19.3% (N=257)	50.3% (N=671)	20.1% (N=268)	6.2% (N=83)	2.5% (N=34)	1.6% (N=21)
Being informed about County services and activities	14.1% (N=202)	44.9% (N=642)	22.7% (N=324)	10.9% (N=156)	5.3% (N=76)	2.0% (N=29)
Opportunities to express opinions about municipal services and/or issues	13.6% (N=186)	41.8% (N=571)	24.1% (N=330)	10.4% (N=142)	5.7% (N=78)	4.4% (N=60)

When looking at these factors based on where residents live, there were no significant differences for one's satisfaction with the County website as a source of information. For the other two aspects, it was found that rural residents were less satisfied with *opportunities to express opinions* and *being informed about County services and activities* than urban residents. This was confirmed through a chi-square analysis.

The age of the resident was not a factor for any of these aspects of communication.

H. Assessment of County communication and information services

Residents were asked to rank the different ways that the County provides information to its residents. Table 6 presents the ratings for each type of media source, on the basis of how each source was ranked by respondents from 1 to 6. Based on how this question was asked, every source would be a “first choice” for somebody.

For example, 42% of respondents picked the *Sherwood Park News* as their first choice, while 8% picked it as their 6th (or last choice). For *brochures or newsletters*, the majority of residents picked this as either their third or fourth choice.

Table 6
Ranking of the ways that Strathcona County provides information to residents*

	First	Second	Third	Fourth	Fifth	Sixth
Sherwood Park News	41.7% (N=551)	16.3% (N=215)	13.6% (N=180)	11.5% (N=152)	9.2% (N=121)	7.7% (N=101)
Brochures or newsletters	7.0% (N=88)	19.1% (N=241)	23.2% (N=292)	24.7% (N=311)	18.4% (N=232)	7.5% (N=95)
Information with utility bill	7.7% (N=100)	16.4% (N=212)	21.6% (N=279)	20.4% (N=263)	19.1% (N=247)	14.8% (N=191)
Open houses / public meetings	2.8% (N=36)	4.8% (N=62)	10.6% (N=136)	16.4% (N=210)	27.0% (N=346)	38.4% (N=193)
Strathcona County website	20.9% (N=280)	28.4% (N=381)	19.1% (N=256)	13.8% (N=185)	11.3% (N=151)	6.6% (N=89)
Social media	23.4% (N=323)	17.8% (N=245)	12.6% (N=173)	11.5% (N=159)	12.6% (N=173)	22.1% (N=305)

*Percentages in this table add up to 100 by rows.

Although residents all have various preferences as to where they will turn for information, it can be gleaned from Table 6 that the most popular sources were as follows:

- *Sherwood Park News* was the first choice for the majority of respondents, though there was a portion of the population who also looked favorably at digital sources, such as getting information via the *Strathcona County Website* or through *social media*.
- *Strathcona County Website* was favored by many as their second choice, though as noted above, a strong portion of residents selected this as their first choice.
- *Social media* was an option that was either somewhat popular among residents or among the last choice. Having this as a choice was likely dependent on how comfortable people were with accessing social media.
- *Open houses/public meetings* were something that most people would turn to after other options had been exhausted.

I. Strathcona County as a place to live

Almost all respondents (95%) would recommend Strathcona County to others as a place to live. From a geographic perspective, a slightly higher percentage of urban residents (96%) felt this way compared to rural residents (91%).

J. Open-ended questions

Respondents were asked to elaborate on how they felt about road and street maintenance, the various recreation and cultural facilities and programming available to them and any other perceptions about Strathcona County.⁷

Road and street maintenance: Out of the 1,457 survey respondents, 558 provided feedback and comments. A breakdown of the broad topics are below:

- 134 – satisfied/found adequate or good the road conditions and maintenance
- 98 – unsatisfied/found road maintenance and conditions poor. Themes included snow removal and rural roads.
- 96 – very good/excellent road conditions and maintenance. Many comparisons to Edmonton’s roads.
- 50 – unhappy with road crack repair; work on/policy for sidewalk and street replacement
- 38 – believe unnecessary work done or service levels on road maintenance higher than necessary
- 33 – unhappy with traffic light timing; left turn light time; traffic calming; Sherwood Drive traffic circle changes
- 20 – rural issues – need for multi-use paths next to roads; resurfaced roads too narrow; weeds and ditches not maintained
- Other comments – night time snow removal and construction is bothersome; residential speed limit should be 40 km/h; better communication with residents on street cleaning and construction

Indoor recreation facilities, outdoor spaces/facilities and cultural facilities: Out of the 1,457 survey respondents, 918 provided feedback and comments. A breakdown of the broad topics are below:

- 308 – Satisfied with the different indoor and outdoor recreation options available throughout Strathcona County.
- 23 – felt that indoor recreation facilities and outdoor spaces (such as the dog park) are well maintained
- 14 – felt that more could be done to maintain the indoor recreation facilities and outdoor spaces
- 23 – concerned with rising costs for facilities (especially indoor ones)

⁷ A more detailed summary of each of the open-ended questions is available upon request.

- 20 – felt that the change rooms in various SC facilities either need more consistent cleaning or should be renovated.
- 23 – would like to see additional recreation classes offered to residents at different times of the day
- 32 – appreciate the Ardrossan Recreation Facility
- 12 - felt that the Ardrossan Recreation Facility needs an indoor pool
- 38 – who were disappointed in the new Emerald Hills Pool
- 17 – poor parking at different recreation facilities, especially at Emerald Hills.
- 11 – people who feel that the outdoor spaces and indoor recreation facilities, especially Millennium Place, are quite busy at times
- Other comments – would like Strathcona County to have an outdoor pool; make outdoor spaces to be smoke free; more outdoor trails and activities are needed; have an indoor rock climbing wall; some residents do not like Edmonton residents using Strathcona County's recreation facilities.

Other suggestions or concerns: Out of the 1,457 survey respondents, 593 provided feedback and comments. A breakdown of the broad topics are below:

- 125 – satisfied with living in Strathcona County. Specific comments varied, but included an appreciation of amenities, neighbors and different programs and services offered throughout the County.
- 63 – mentioned different aspects of transit issues that they've experienced.
- 45 – commented on different transportation and traffic issues, included perception problems associated with traffic lights not being synchronized.
- 33 – put forward suggestions and issues focusing on seniors living in the County.
- 31 – commented on the Strathcona County Library. While the majority of the comments praised the library, there were some who experienced parking issues when accessing the library.
- 29 – reported on experiences they had with the Mayor and Council, with the majority of the experiences being problematic.
- 23 – expressed concerns with how taxes were being used, and why they felt they were not getting value for the money.
- 16 – concerned with the lack of a hospital in Strathcona County (even though it's a Provincial issue and beyond the control of the municipality. A proportion of residents do not distinguish between levels of government).
- 17 – expressed concerns with the weed control, grass maintenance and drainage in public areas throughout Strathcona County.
- 22 – perceptions of safety, with the majority of comments focusing on feeling safe living in the County.

- 26 – commented on aspects of waste collection and other aspects associated with the Green Routine.
- Other comments put forward by respondents included queries for more services being made available in Ardrossan, more accessibility for the disabled; having more dog parks in the County; better and more consistent maintenance of outdoor rinks and trails; road maintenance, and air quality.

APPENDIX A: QUESTIONS ASKED IN THE PUBLIC SURVEY

Municipal Service Usage

For each service, please indicate whether you have used it since January 1, 2016.

1	2	3
Never used	sometimes	frequently
If the question does not pertain to you, please check off not applicable (n/a)		

- Strathcona County Library
- Strathcona County Transit - Commuter services
- Strathcona County Transit - Mobility
- Strathcona County Transit - Local services
- Strathcona County Transit - Special Events
- Indoor recreation facility (ex. Millennium Place, Ardrossan Rec Centre, Broadmoor Golf Course, Olympiette Centre)
- Outdoor spaces (ex. Strathcona Wilderness Centre, Strathcona Athletic Park, playgrounds, spray parks, trails)
- Receive an SC Alert

For each question, please indicate your level of satisfaction you attach to the item. Please read each statement carefully, and fill in *one* circle only, using the satisfaction scale below.

1	2	3	4	5	6
very dissatisfied	dissatisfied	slightly dissatisfied	slightly satisfied	satisfied	very satisfied
If the question does not pertain to you, or you do not have an opinion, please check off not applicable (n/a)					

What is your level of satisfaction with:

- a) Urban street maintenance this past summer?
- b) Rural road maintenance this past summer?
- c) Sewer services provided by Strathcona County?
- d) Water services provided by Strathcona County?
- e) Green Routine, which includes the collection of waste, organic and recycling materials
- f) Outdoor spaces such as parks, trails, playgrounds and sports fields?
- g) Indoor recreation facilities such as arenas and pools?
- h) Cultural facilities such as Festival Place, Gallery@501 and Smeltzer House/Clay Hut?
- i) Public transit services?
- j) The Strathcona County Library?
- k) The Strathcona County website as a source of information?
- l) Opportunities to express opinions about municipal services or municipal issues in Strathcona County?
- m) You are informed about County services and activities provided by Strathcona County?

For each question, please indicate your level of awareness you attach to the item. Please read each statement carefully, and choose *one only*, using the awareness scale below.

1	2	3	4
Not at all aware	Slightly aware	Moderately aware	Very aware
If the question does not pertain to you, or you do not have an opinion, please check off not applicable (n/a)			

What is your level of awareness of/that:

- The natural terrain in the east and south areas of Strathcona County are part of a UNESCO Biosphere?
- The SC Alert system?
- Emergency Services is an integrated fire and emergency medical service?
- The Boards and Committee recruitment process?
- The decision-making role of Council?
- Strathcona County financial information is available on the web?

For each question, please indicate the rating of quality you attach to the item. Please read each statement carefully, and choose *one only*, using the quality scale below.

1	2	3	4	5
Poor	Fair	Good	Very good	Excellent
If the question does not pertain to you, or you do not have an opinion, please check off not applicable (n/a)				

How would you rate:

- Strathcona County as a place to raise children?
- Strathcona County as a place to retire?
- The value received in municipal services for your municipal tax dollar?
- Your personal safety living in Strathcona County?
- Strathcona County, overall, as a place to live?

Other

Would you recommend Strathcona County to others as a place to live? (Yes/No)

How many adults in your neighborhood do you know by name? (#)

Rank your preference for getting County information: (1-6)

- Sherwood Park News?
- Brochures or newsletters?
- Information sent with your utility bill?
- Public meetings or open houses?
- Information on the Strathcona County website?
- Social media?

Open Ended Questions

- Additional comments on improving road and street maintenance
- Comments about the different indoor and outdoor recreation and cultural facilities
- Additional comments and feedback about other aspects of living in Strathcona County

Demographics

Where you live (Sherwood Park, Rural Strathcona)

Are you a homeowner or a renter?

Are there any children under 18 living in your household?

Any adults in your household work somewhere within Strathcona County?

Age group (18-39, 40-65, 65+)

Interest in receiving a free monthly e-newsletter about public engagement opportunities in SC?