

# Welcome

Township Road 522 Upgrades Project  
Highway 21 to Highway 824  
(Range Road 222)

October 15, 2015

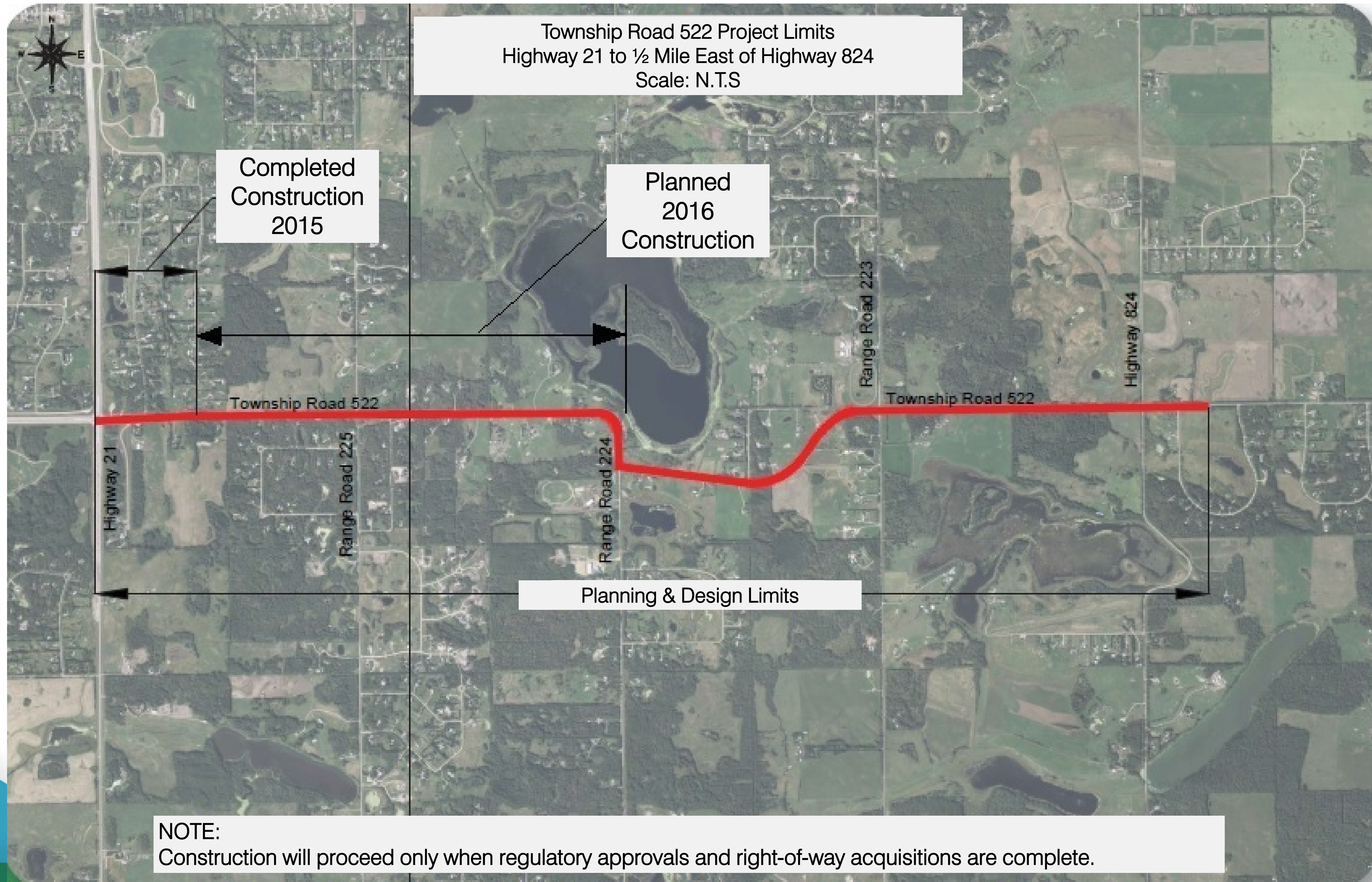


**McElhanney**



**STRATHCONA  
COUNTY**

# TOWNSHIP ROAD 522 UPGRADES PROJECT



# Purpose of October 15 Open House

- keep the community informed about the Township Road 522 upgrades project
- present timelines for next phases
- respond to issues and concerns raised at the February 2015 Open House
- gather comments from the public

## Project purpose

To ensure that the corridor functions safely and efficiently in the future. Upgrades will:

- meet current design standards and safety guidelines
- provide a consistent road width
- improve road network for area residents

**Upgrades are designed to improve safety and ease of travel for existing road users**

# Keeping you informed

1. Initial project information open house  
February 11, 2015 (completed)
2. Project update open house  
October 15, 2015
3. One-on-one landowner meetings (west of RgeRd 224)  
Starting October 2015 (land acquisition and borrow opportunities)
4. Ongoing communication
  - Website updates
  - Spring/fall newsletters to stakeholders

# TOWNSHIP ROAD 522 UPGRADES PROJECT

## What we heard at the last open house:

ISSUE	RESPONSE
Conditions on TwpRd 522 are poor and need improving	Primary objective of the upgrade of TwpRd 522 is to widen and improve the road conditions with new base and pavement.
Discussions around roundabouts, both positive and negative	Roundabouts will not be used on TwpRd 522, primarily due to higher costs, when compared to conventional intersections.
Big Island Lake is an important environmental resource for the area	All measures will be taken to address the Big Island Lake area, from site evaluations, reducing any impacts and permits.
Concerns regarding the safety at RgeRd 225 and TwpRd 522	A safety review will be completed as part of the design of the intersection including options from lighting to larger stop signs.
Concerns regarding noise on TwpRd 522	A noise assessment was completed with monitoring at points along the corridor. The results indicated no requirement for noise mitigation.
Concerns about land acquisition and access	Reviewing to minimize impacts to adjacent landowners. Discussions with landowners will begin October 2015.

## 2015 Construction

Section east of Highway 21, including the service road was completed to Sherwood Place (east access)

- construction was completed within budget and on schedule
- some temporary transitions to be finished with next stage of construction

# Planned 2016 Construction

Current plan is to continue the construction from existing limits through to Range Road 224 in 2016, depending on funding, regulatory approvals and land acquisition.

- widening of existing road
- intersection improvements (wider corners)
- land requirements
- environmental permits and protection for Big Island Lake area
- improved curve at RgeRd 224/TwpRd 522
- access to landowner property will be maintained, however there may be temporary roadway closures through the construction



# TOWNSHIP ROAD 522 UPGRADES PROJECT

Place holder slide (not for print)

Table 1: Whole Corridor, color, aerial photobase 1:5000 scale

Table 2: Hwy 21 to RgeRd 224, profile, aerial photobase 1:1000 scale

## Future construction timelines RgeRd 224 to RgeRd 222

Strathcona County will be moving forward with detailed design and construction for Township Road 522, between Range Road 224 and Highway 824 (Range Road 222) in future years, based on right-of-way acquisition, regulatory approvals and funding.

# THANK YOU

Please complete the comment card

or

provide your comments online

[www.strathcona.ca/Twp522](http://www.strathcona.ca/Twp522)