

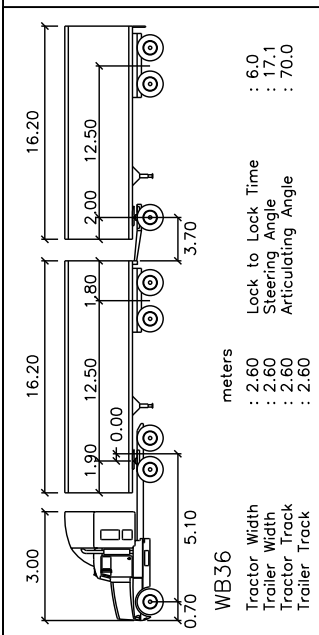
# APPENDIX E

## Truck Turning Diagrams

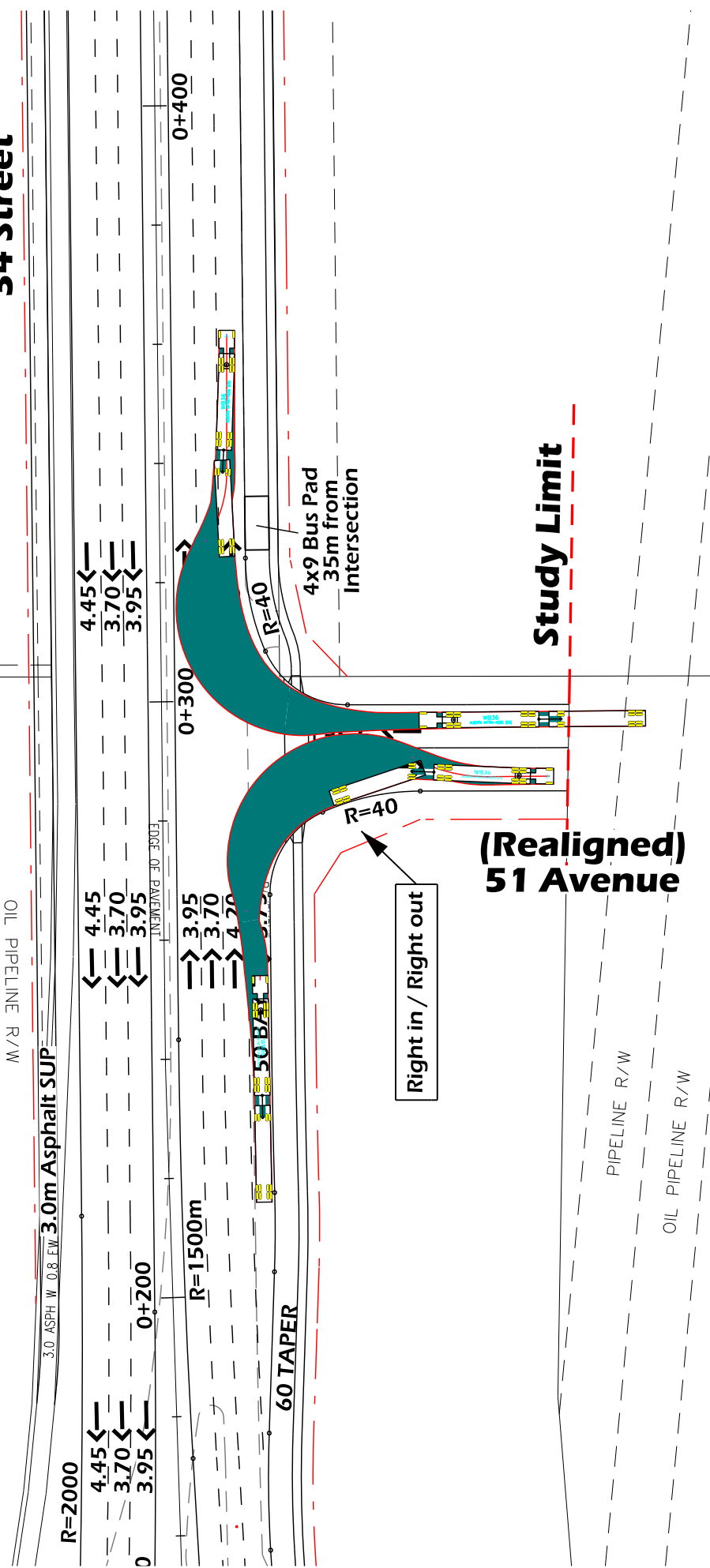




# 34 Street



Truck turning movements are completed in Autoturn and are estimated representation of turning vehicles. Actual turning movements are likely to be improved as compared with this representation.



**Study Limit**

**(Realigned) 51 Avenue**

CONCEPT - SUBJECT TO PRELIMINARY SURVEY AND DESIGN

**34th Street**  
 Truck Turning Template WB-36 at 5 km/h  
 51 Avenue

15m 0 30m

DRAWN: TD  
 REVIEWED:  
 DATE: 2013 05 16

**Sht 1-1 - 51 Ave**

THE CITY OF **Edmonton** TRANSPORTATION SERVICES

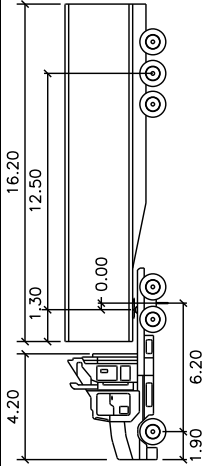
**STRATHCONA COUNTY**

**McElhanney**  
 Consulting Services Ltd.

**LEGEND**

Left Turn Path

Right Turn Path

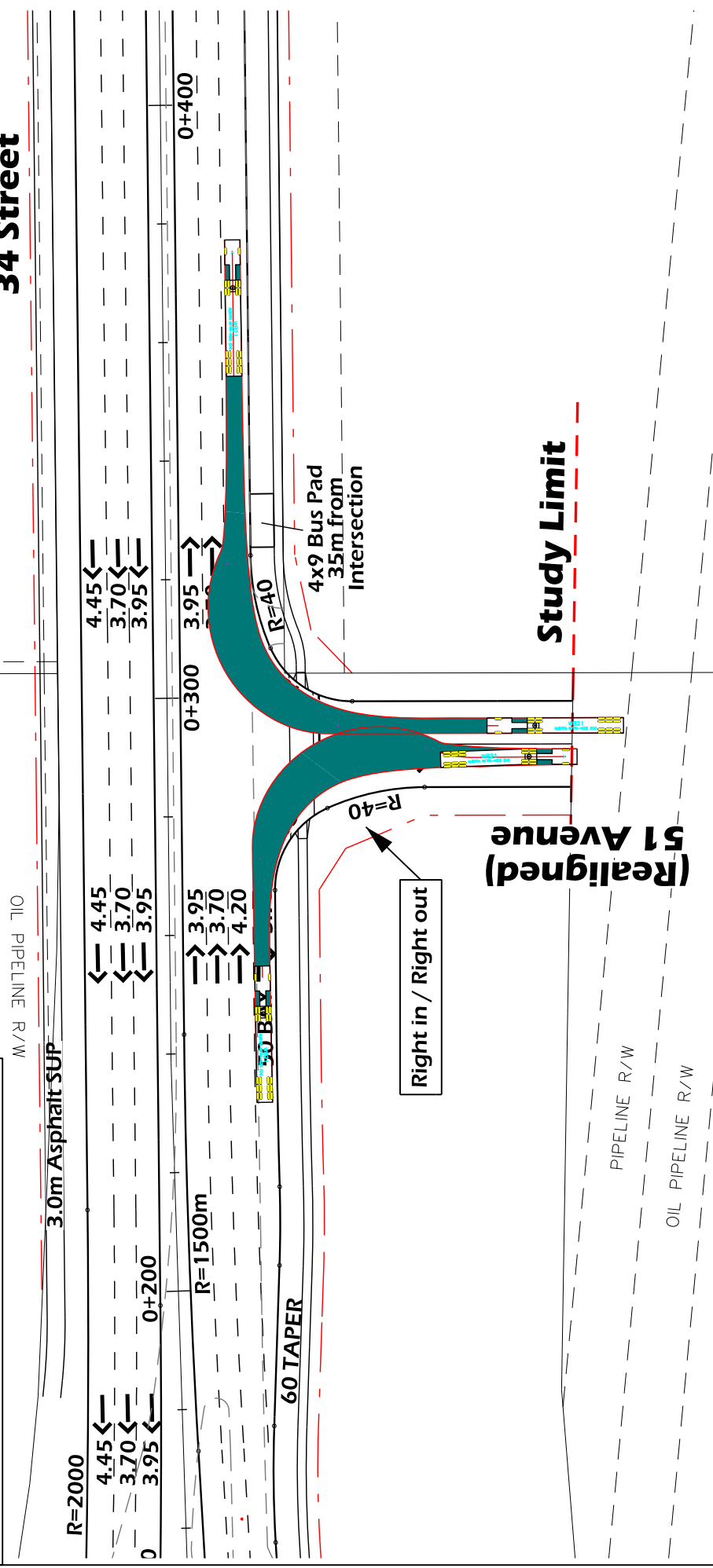


WB21 meters	
Tractor Width	: 4.20
Tractor Track	: 1.90
Trailer Width	: 6.20
Trailer Track	: 1.30
Lock to Lock Time	: 6.0
Steering Angle	: 26.6
Articulating Angle	: 70.0
	: 2.60

Truck turning movements are completed in Autoturn and are estimated representation of turning vehicles. Actual turning movements are likely to be improved as compared with this representation.



# 34 Street

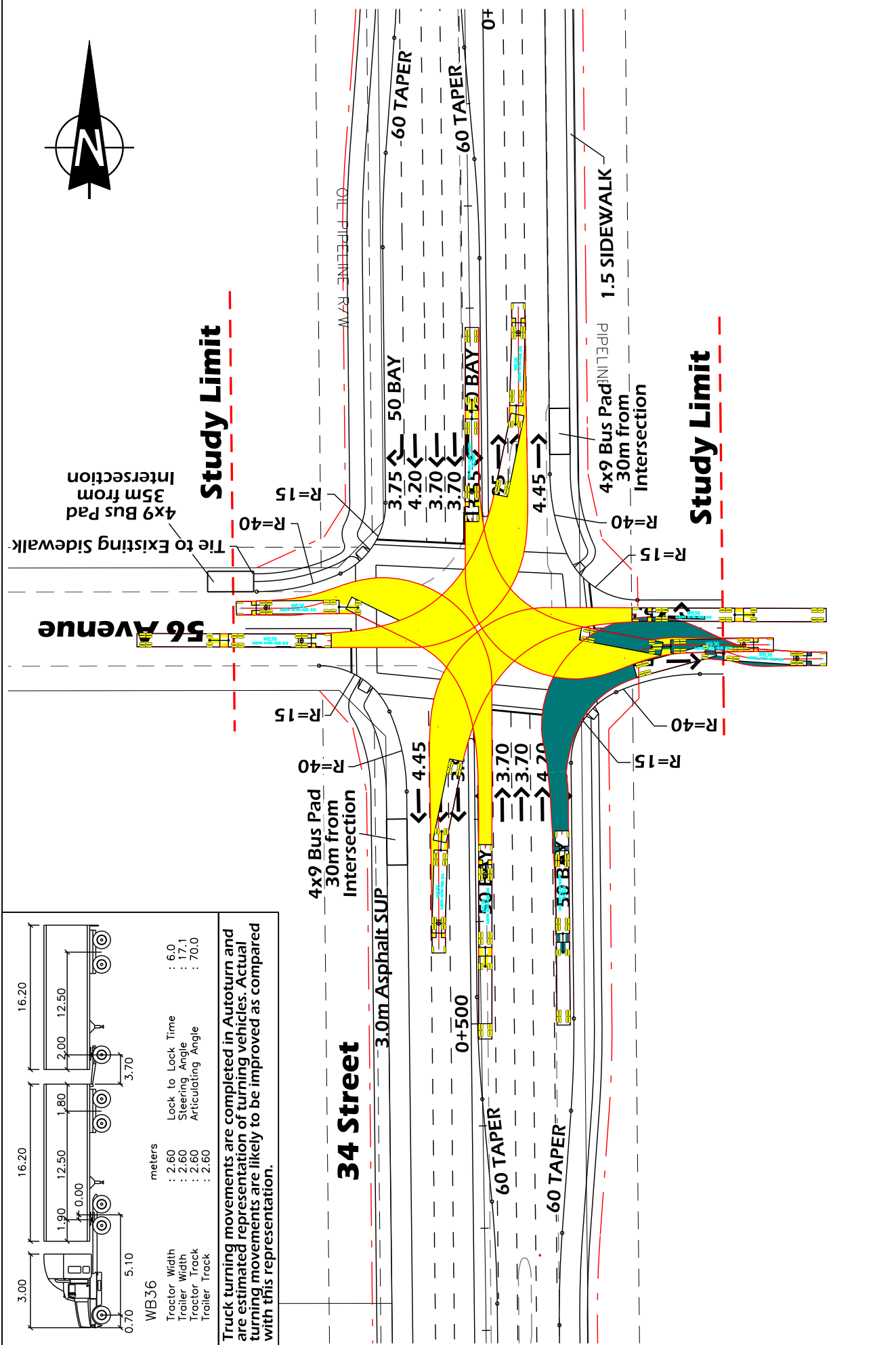


**(Religned)  
51 Avenue**

**Study Limit**

<p><b>LEGEND</b></p> <ul style="list-style-type: none"> <li>Left Turn Path</li> <li>Right Turn Path</li> </ul>	<p>CONCEPT - SUBJECT TO PRELIMINARY SURVEY AND DESIGN</p> <p><b>34th Street</b></p> <p>Truck Turning Template WB-21 at 5 km/h</p> <p>51 Avenue</p>	<p>15m 0 30m</p> <p>DRAWN: TD REVIEWED: DATE: 2013 05 16</p> <p><b>Sht 1-2 - 51 Ave</b></p>
	<p>THE CITY OF <b>Edmonton</b> TRANSPORTATION SERVICES</p> <p><b>McElhanney</b> Consulting Services Ltd.</p> <p><b>STRATHCONA COUNTY</b></p>	





**WB36**

Tractor Width	: 2.60	Lock to Lock Time	: 6.0
Trailer Width	: 2.60	Steering Angle	: 17.1
Tractor Track	: 2.80	Articulating Angle	: 70.0
Trailer Track	: 2.80		

**Truck turning movements are completed in Autoturn and are estimated representation of turning vehicles. Actual turning movements are likely to be improved as compared with this representation.**

**LEGEND**

- Left Turn Path
- Right Turn Path

CONCEPT - SUBJECT TO PRELIMINARY SURVEY AND DESIGN

**34th Street**

Truck Turning Template WB-36 at 5 km/h  
56 Avenue

15m 0 30m

DRAWN: TD  
REVIEWED:  
DATE: 2013 05 16

**Sht 2-1 - 56 Ave**

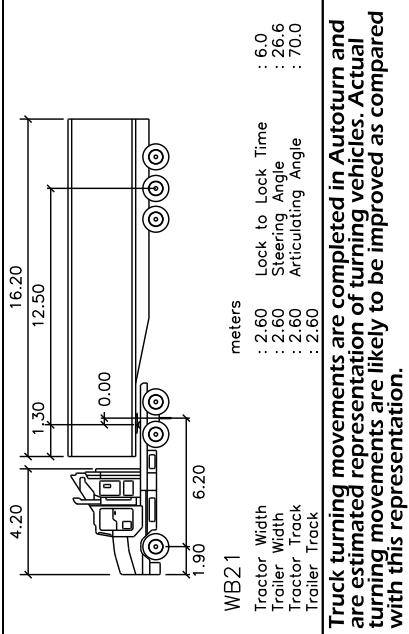
THE CITY OF **Edmonton**

TRANSPORTATION SERVICES

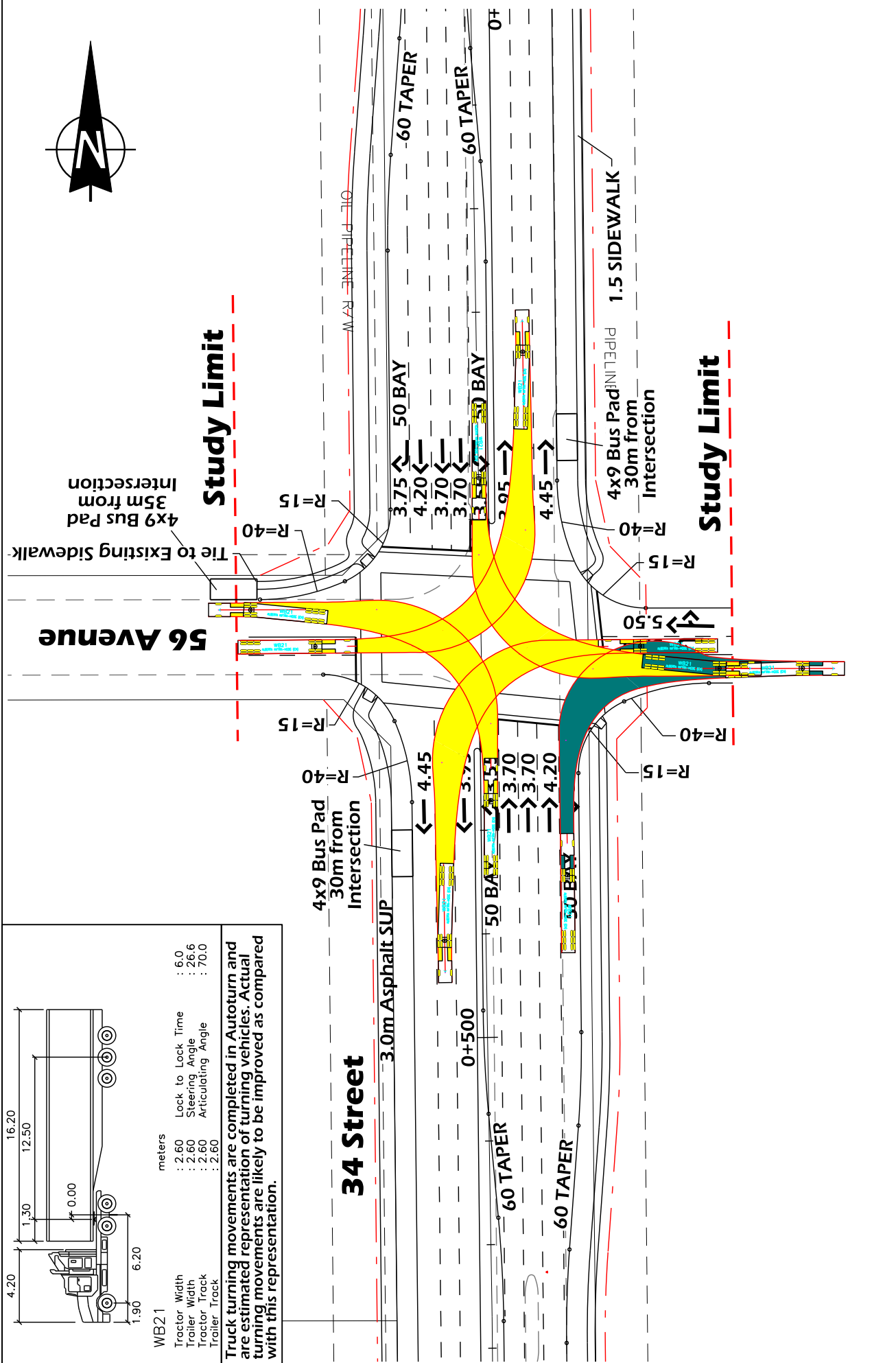
**McElhanney**

Consulting Services Ltd.

**STRATHCONA COUNTY**



Truck turning movements are completed in Autoturn and are estimated representation of turning vehicles. Actual turning movements are likely to be improved as compared with this representation.

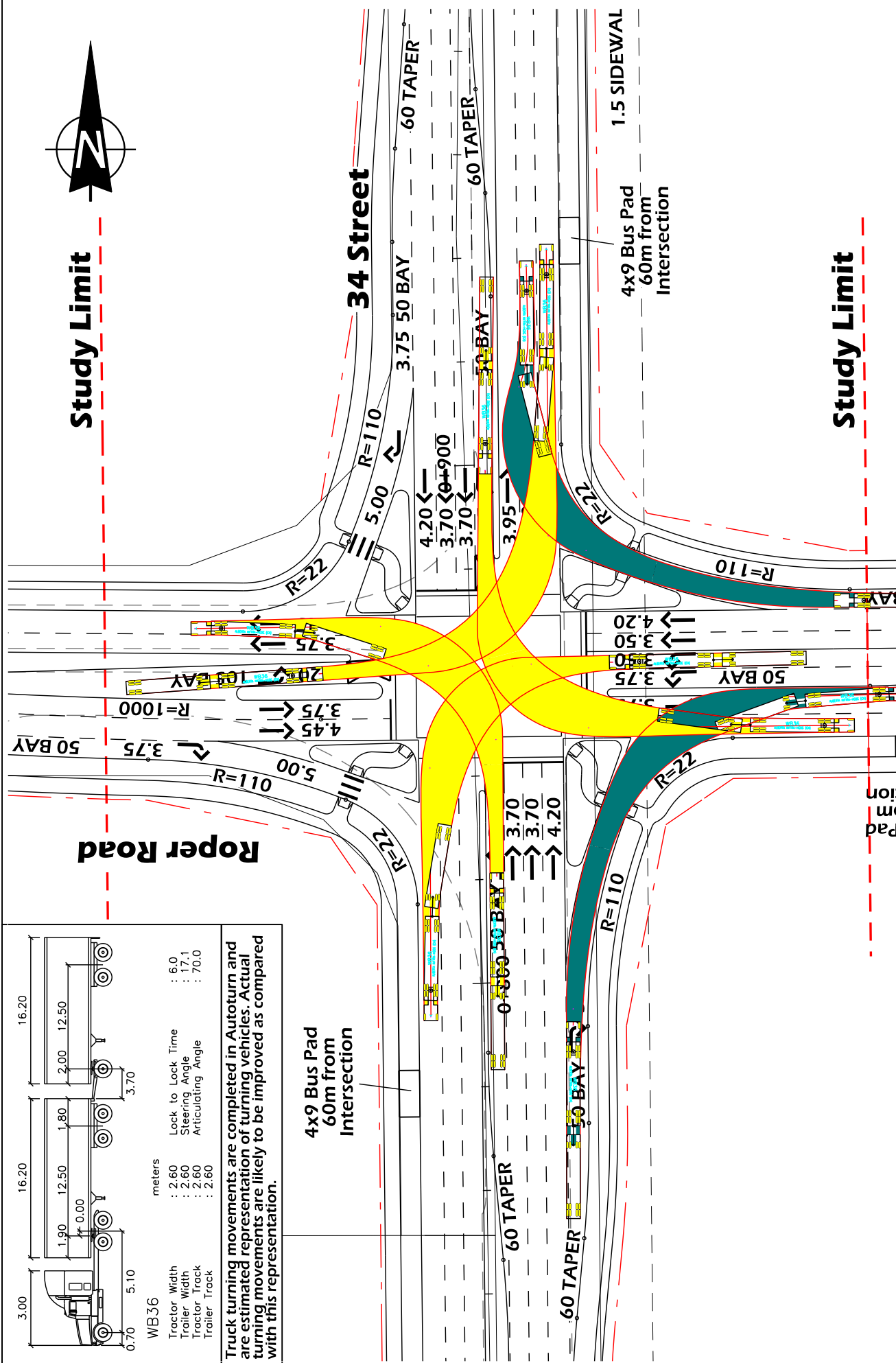


56 Avenue

Study Limit

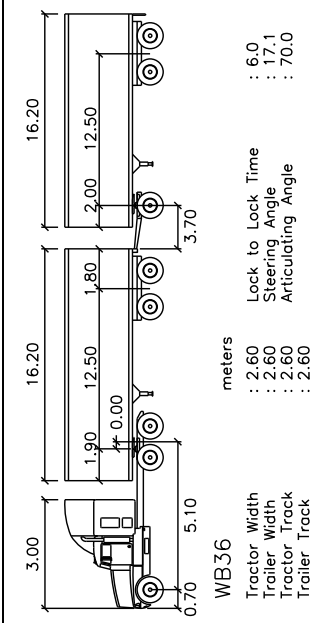
Study Limit

<b>LEGEND</b> Left Turn Path Right Turn Path	<b>McElhanney</b> Consulting Services Ltd.	THE CITY OF <b>Edmonton</b> TRANSPORTATION SERVICES	STRATHCONA COUNTY	CONCEPT - SUBJECT TO PRELIMINARY SURVEY AND DESIGN
				34th Street Truck Turning Template WB-21 at 5 km/h 51 Avenue
15m 0 30m			DRAWING NO: Sht 2-2 - 56 Ave REVIEWED: DATE: 2013 05 16	Sht 2-2 - 56 Ave



**Study Limit**

**Study Limit**



Truck turning movements are completed in Autoturn and are estimated representation of turning vehicles. Actual turning movements are likely to be improved as compared with this representation.

CONCEPT - SUBJECT TO PRELIMINARY SURVEY AND DESIGN

**34th Street**

Truck Turning Template WB-36 at 5 km/h  
Future Roper Road

15m 0 30m

DRAWN: TD  
REVIEWED:  
DATE: 2013 05 16

**Sht 3-1 - Roper Rd**

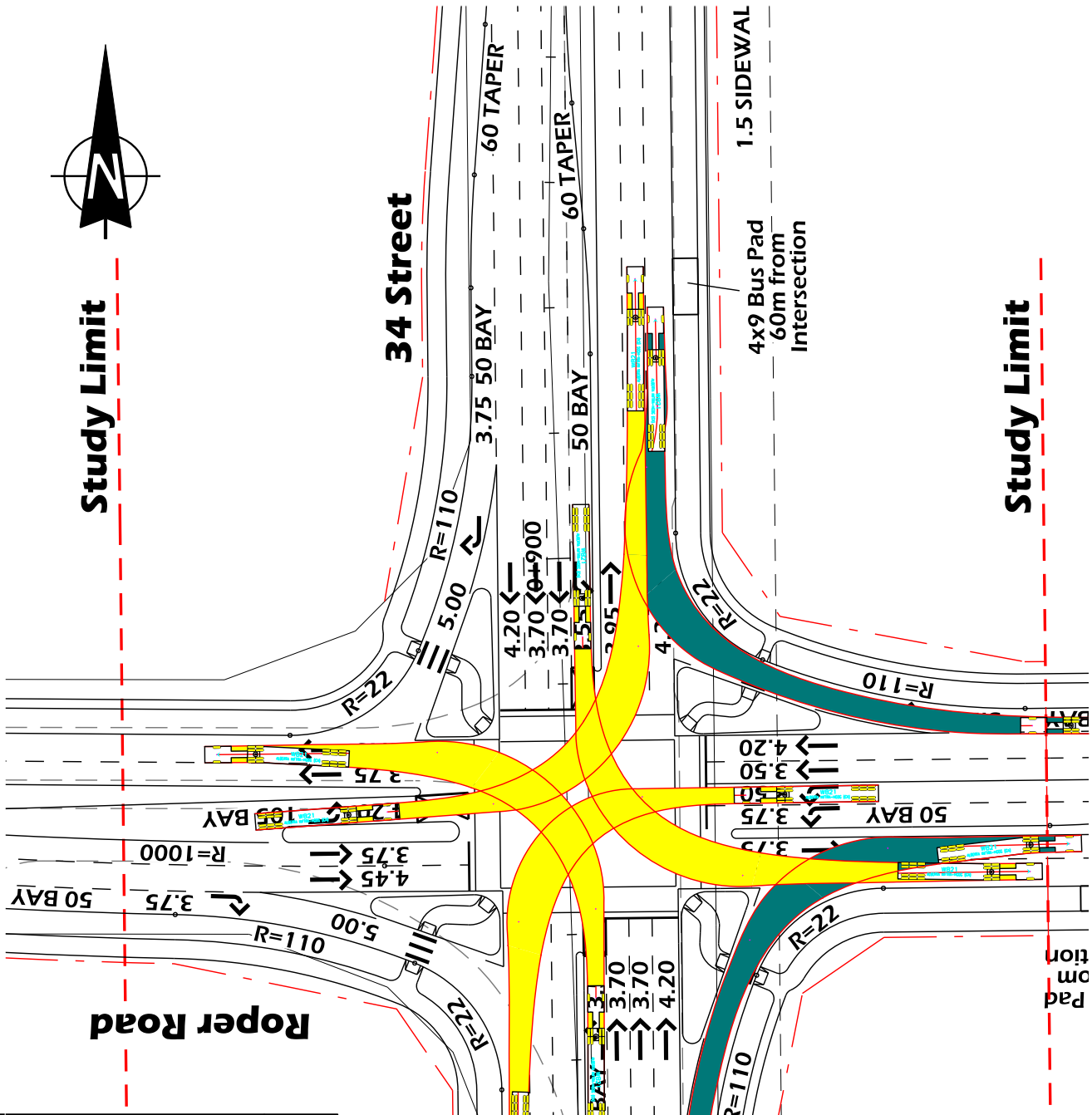
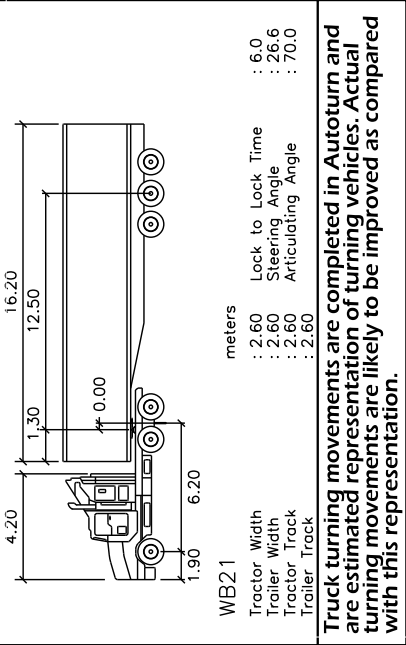
THE CITY OF **Edmonton** TRANSPORTATION SERVICES

**STRATHCONA COUNTY**

**McElhanney**  
Consulting Services Ltd.

**LEGEND**

- Left Turn Path
- Right Turn Path



**LEGEND**

- Left Turn Path
- Right Turn Path

CONCEPT - SUBJECT TO PRELIMINARY SURVEY AND DESIGN

**34th Street**

Truck Turning Template WB-21 at 5 km/h  
Future Roper Rd

THE CITY OF **Edmonton** TRANSPORTATION SERVICES

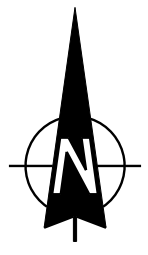
**McElhanney**  
Consulting Services Ltd.

STRATHCONA COUNTY

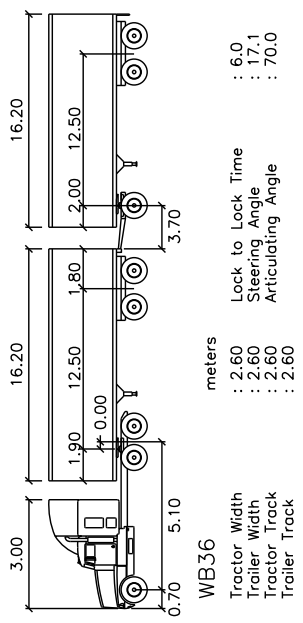
DRAWN: TD  
REVIEWED:  
DATE: 2013 05 16

Sht 3-2 - Roper Rd

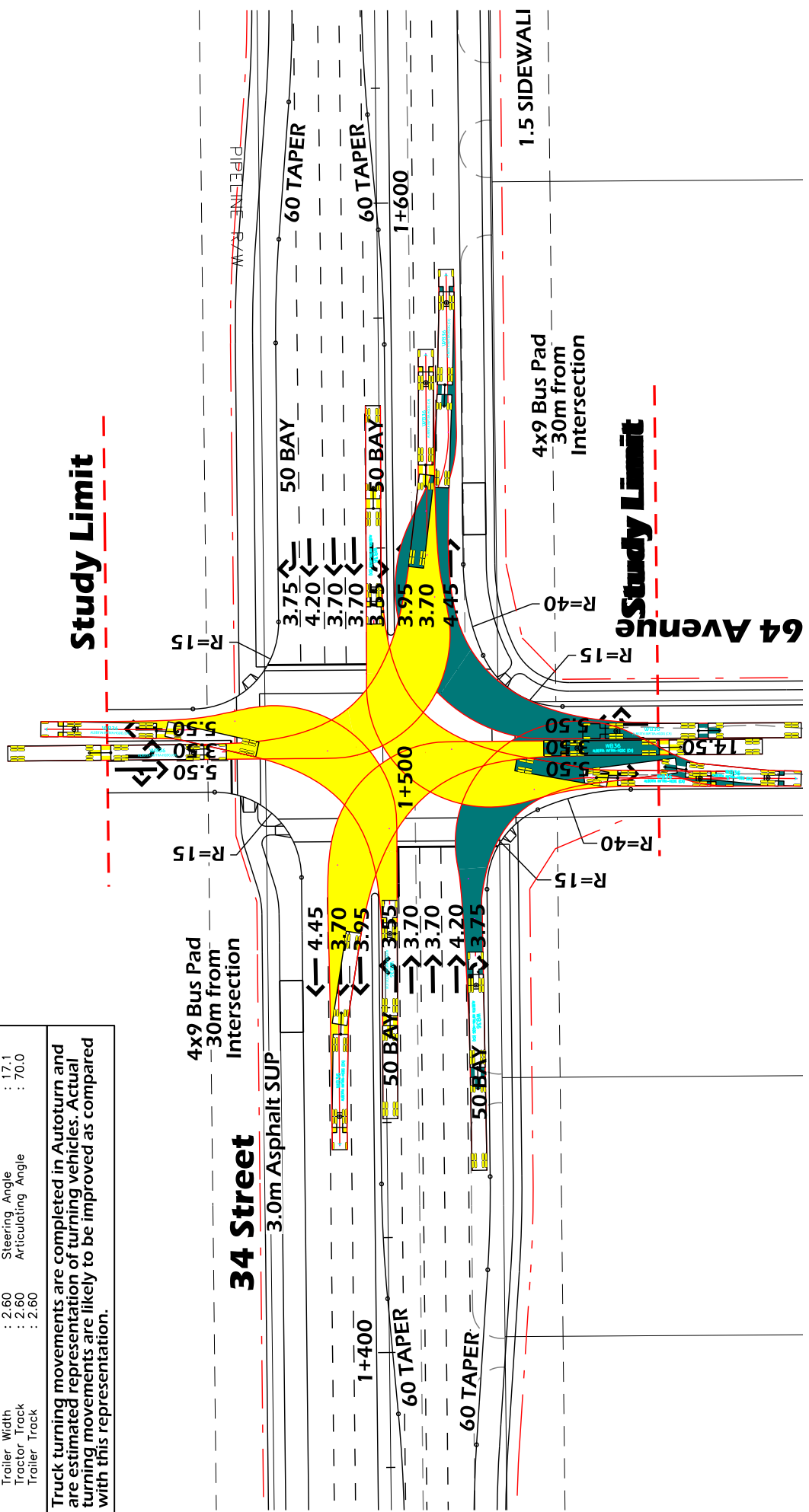
15m 0 30m



**Note:**  
Access subject to approval with future development applications per latest City Of Edmonton access management guidelines.

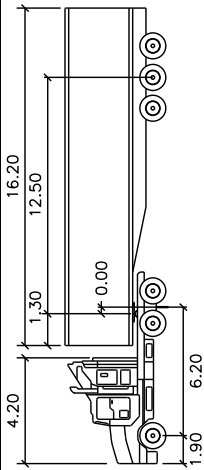


Truck turning movements are completed in Autoturn and are estimated representation of turning vehicles. Actual turning movements are likely to be improved as compared with this representation.



<p><b>LEGEND</b></p> <ul style="list-style-type: none"> <li><span style="display: inline-block; width: 20px; height: 10px; background-color: yellow; border: 1px solid black;"></span> Left Turn Path</li> <li><span style="display: inline-block; width: 20px; height: 10px; background-color: teal; border: 1px solid black;"></span> Right Turn Path</li> </ul>	<p>CONCEPT - SUBJECT TO PRELIMINARY SURVEY AND DESIGN</p> <p><b>34th Street</b></p> <p>Truck Turning Template WB-36 at 5 km/h 64 Avenue</p>	<p>15m 0 30m</p> <p>DRAWN: TD REVIEWED: DATE: 2013 05 16</p>
	<p>THE CITY OF <b>Edmonton</b> TRANSPORTATION SERVICES</p> <p><b>McElhanney</b> Consulting Services Ltd.</p> <p><b>STRATHCONA COUNTY</b></p>	<p><b>Sht 4-1 - 64 Ave</b></p>





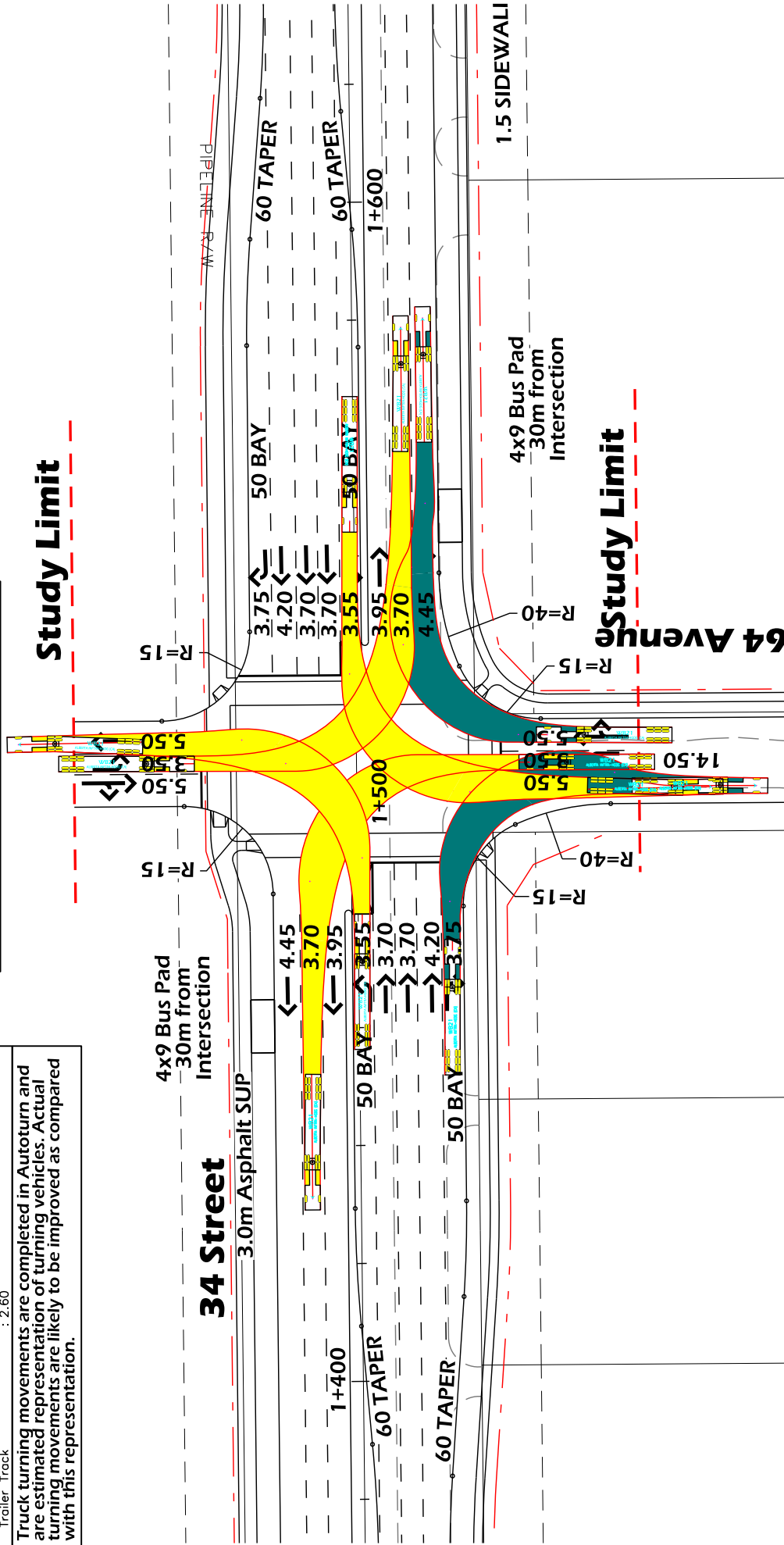
WB21		meters	
Tractor Width	: 2.60	Lock to Lock Time	: 6.0
Trailer Width	: 2.60	Steering Angle	: 26.6
Tractor Track	: 2.60	Articulating Angle	: 70.0
Trailer Track	: 2.60		

Truck turning movements are completed in Autoturn and are estimated representation of turning vehicles. Actual turning movements are likely to be improved as compared with this representation.

**Note:**  
Access subject to approval with future development applications per latest City Of Edmonton access management guidelines.



**Study Limit**



**LEGEND**

- Left Turn Path
- Right Turn Path



**34th Street**

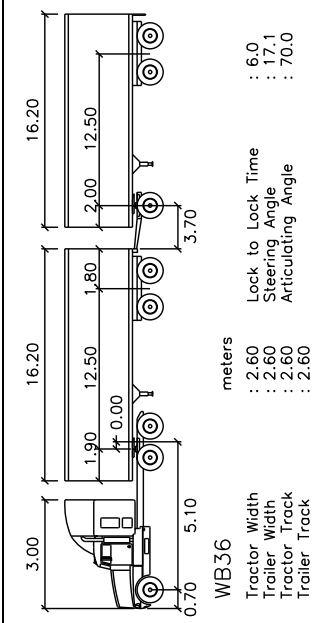
Truck Turning Template WB-21 at 5 km/h  
64 Avenue

CONCEPT - SUBJECT TO PRELIMINARY SURVEY AND DESIGN



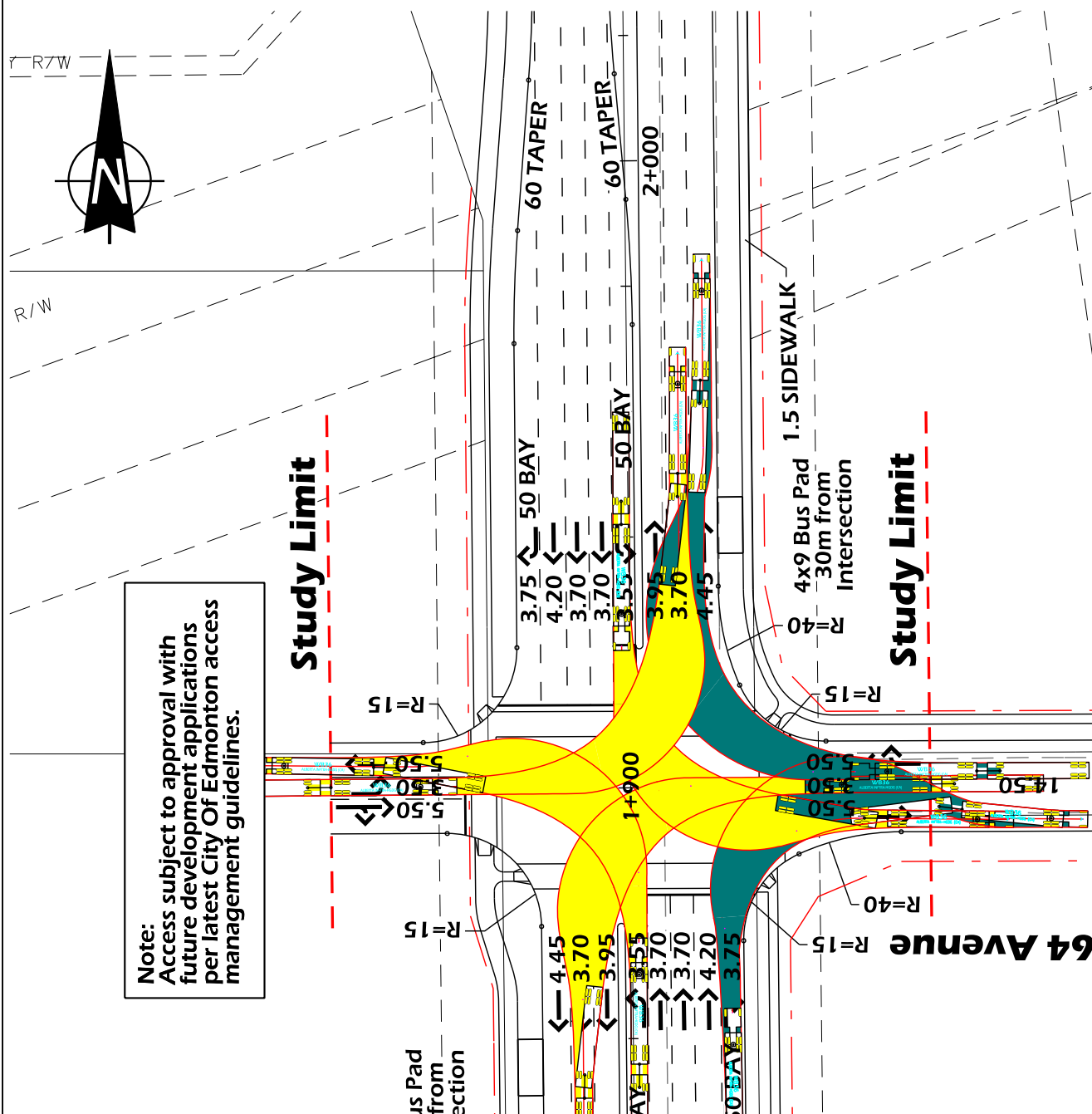
DRAWN: TD  
REVIEWED:  
DATE: 2013.05.16

**Sht 4-2 - 64 Ave**



Truck turning movements are completed in Autoturn and are estimated representation of turning vehicles. Actual turning movements are likely to be improved as compared with this representation.

**Note:**  
Access subject to approval with future development applications per latest City Of Edmonton access management guidelines.



**LEGEND**

- Left Turn Path
- Right Turn Path

**McElhanney**  
Consulting Services Ltd.

THE CITY OF **Edmonton** TRANSPORTATION SERVICES  
**STRATHCONA COUNTY**

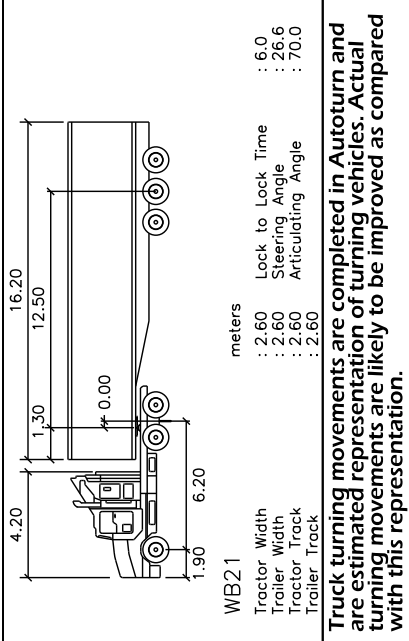
CONCEPT - SUBJECT TO PRELIMINARY SURVEY AND DESIGN

**34th Street**  
Truck Turning Template WB-36 at 5 km/h  
68 Avenue

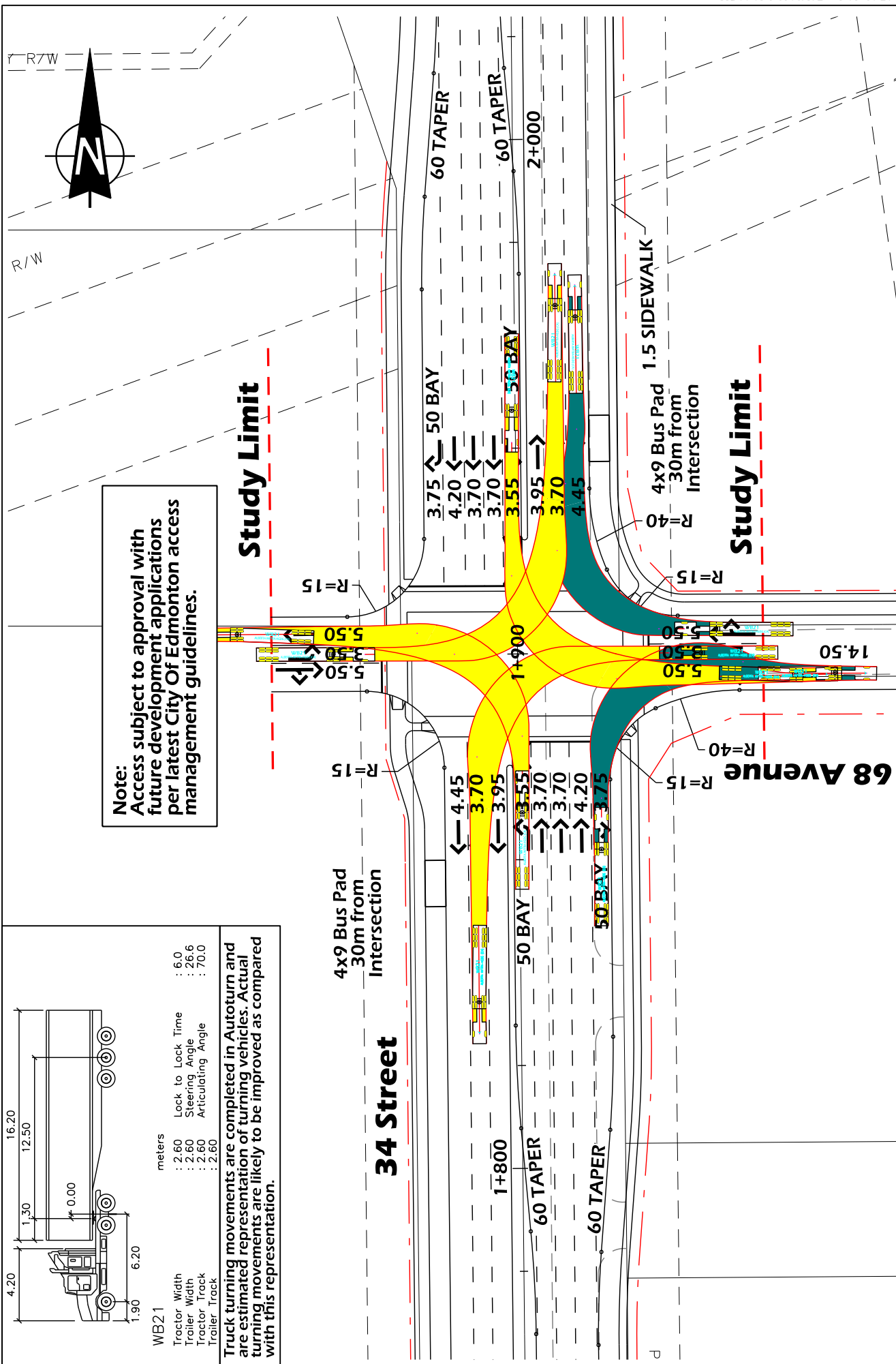
15m 0 30m

DRAWN: TD  
REVIEWED:  
DATE: 2013 05 16

**Sht 5-1 - 68 Ave**



**Note:**  
Access subject to approval with future development applications per latest City Of Edmonton access management guidelines.



**LEGEND**

- Left Turn Path
- Right Turn Path

**McElhanney**  
Consulting Services Ltd.

THE CITY OF **Edmonton** TRANSPORTATION SERVICES  
**STRATHCONA COUNTY**

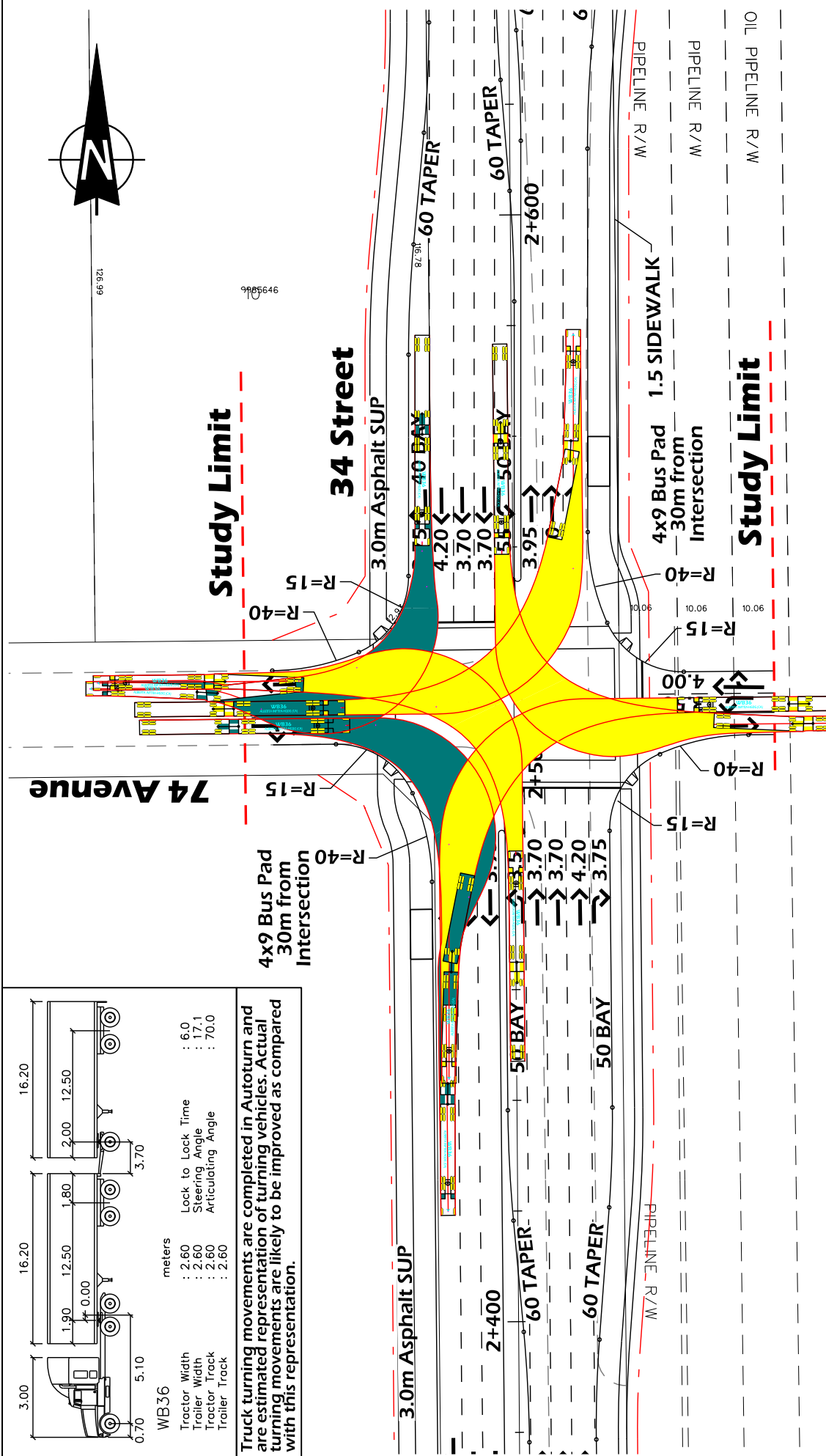
CONCEPT - SUBJECT TO PRELIMINARY SURVEY AND DESIGN

**34th Street**  
Truck Turning Template WB-21 at 5 km/h  
68 Avenue

15m 0 30m

DRAWN: TD  
REVIEWED:  
DATE: 2013.05.16

**Sht 5-2 - 68 Ave**



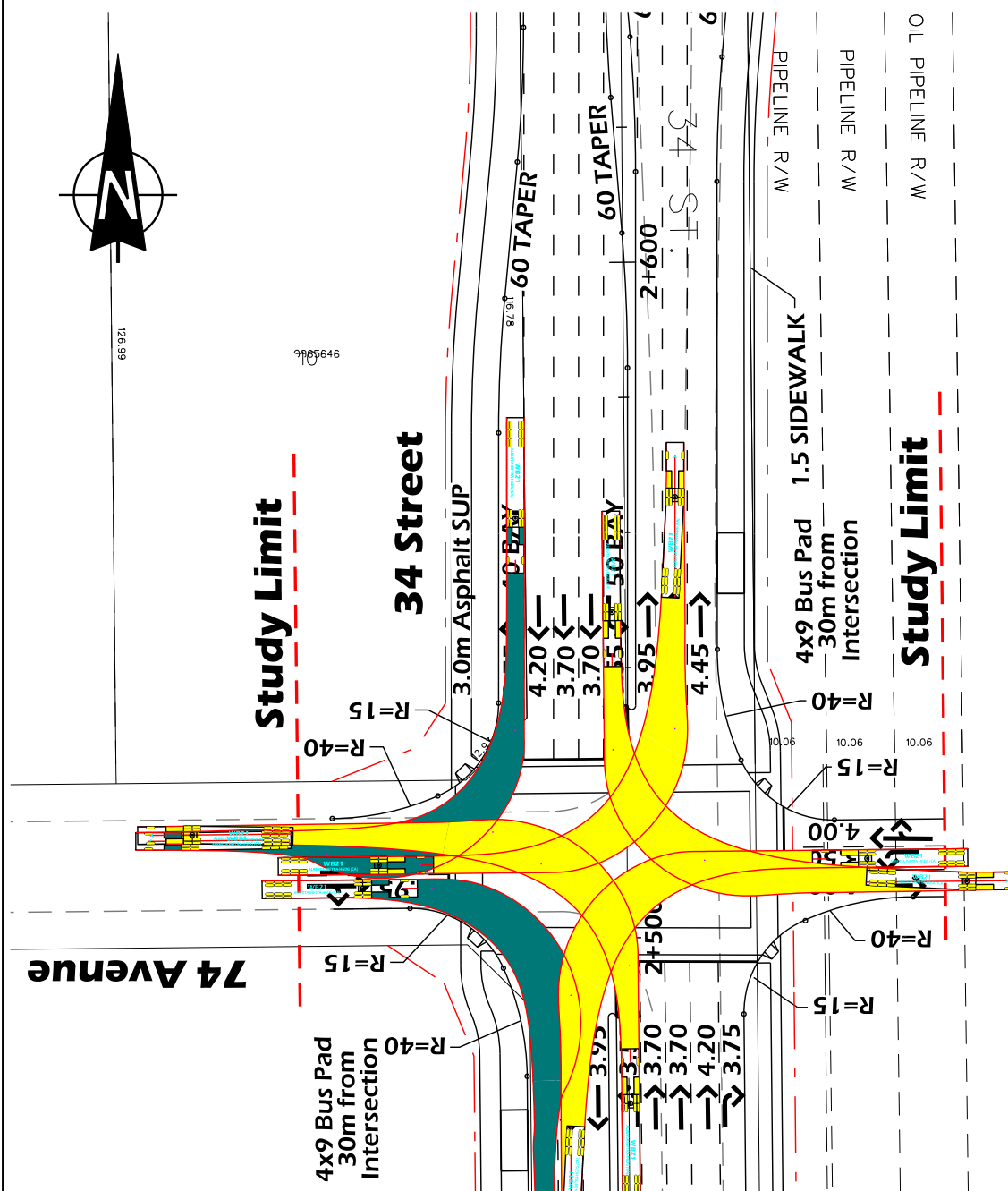
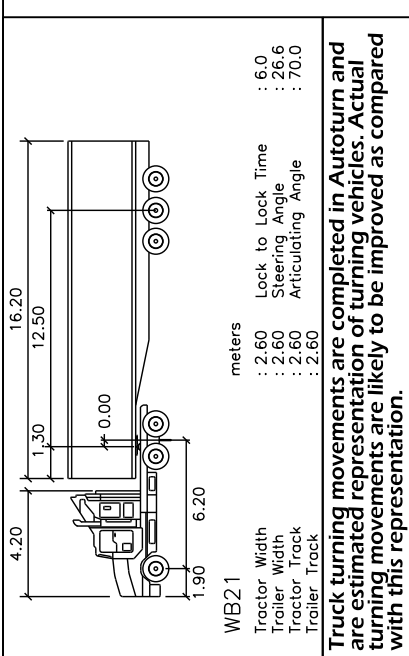
**Note:**  
 Access subject to approval with future development applications per latest City Of Edmonton access management guidelines.

WB36		meters	
Tractor Width	: 2.60	Lock to Lock Time	: 6.0
Trailer Width	: 2.80	Steering Angle	: 17.1
Tractor Track	: 2.80	Articulating Angle	: 70.0
Trailer Track	: 2.80		

Truck turning movements are completed in Autoturn and are estimated representation of turning vehicles. Actual turning movements are likely to be improved as compared with this representation.

<b>LEGEND</b> Left Turn Path Right Turn Path	CONCEPT - SUBJECT TO PRELIMINARY SURVEY AND DESIGN  <b>34th Street</b> Truck Turning Template WB-36 at 5 km/h 74 Avenue	DRAWN: TD REVIEWED: DATE: 2013 05 16	15m 0 30m	<b>Sht 6-1 - 74 Ave</b>
				 THE CITY OF EDMONTON TRANSPORTATION SERVICES





**Note:**  
Access subject to approval with future development applications per latest City Of Edmonton access management guidelines.

**LEGEND**

- Left Turn Path
- Right Turn Path

CONCEPT - SUBJECT TO PRELIMINARY SURVEY AND DESIGN

**34th Street**  
Truck Turning Template WB-21 at 5 km/h  
74 Avenue

15m 0 30m

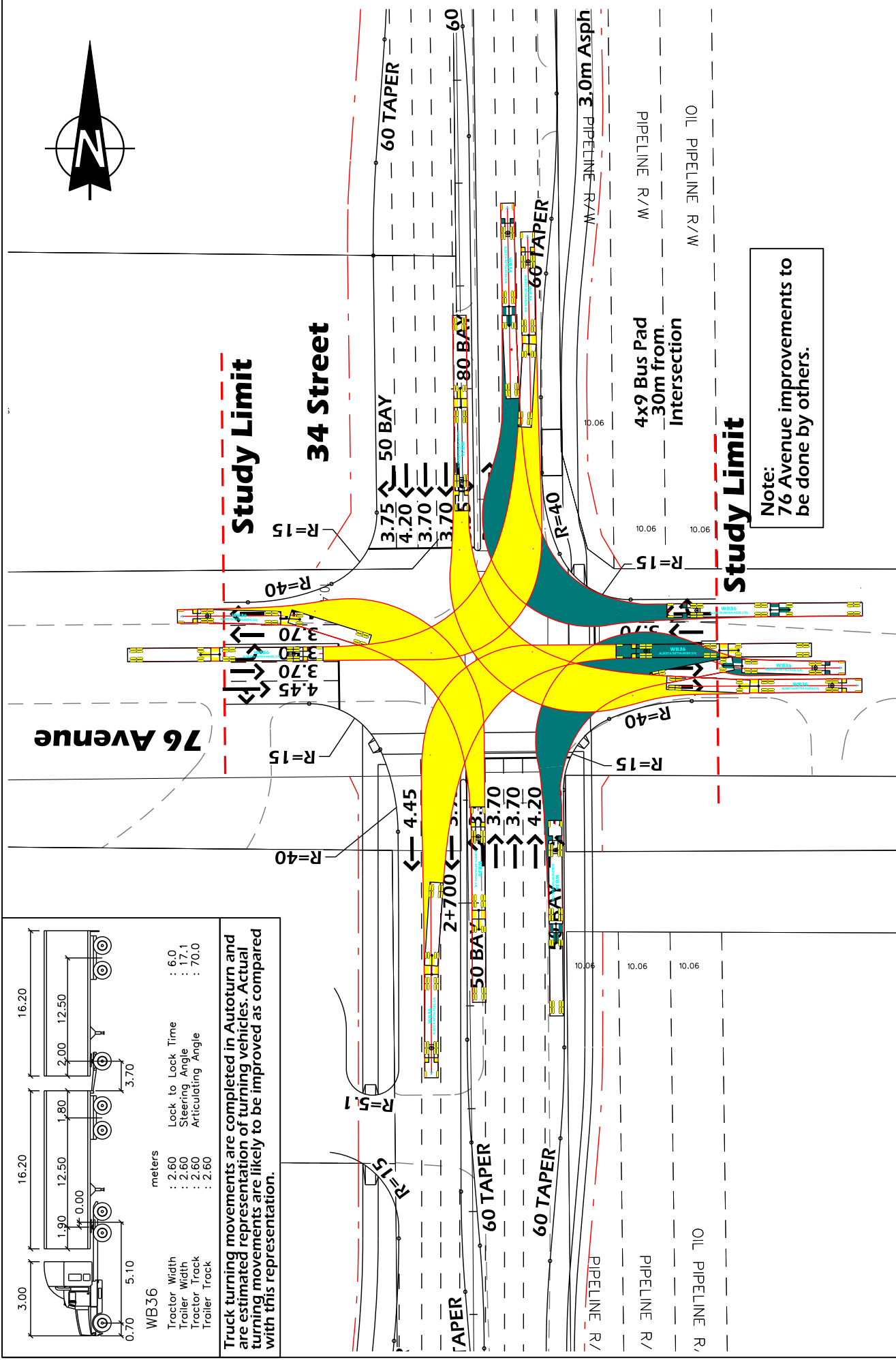
DRAWN: TD  
REVIEWED:  
DATE: 2013 05 16

**Sht 6-2 - 74 Ave**

**Edmonton** TRANSPORTATION SERVICES

**McElhanney** Consulting Services Ltd.

**STRATHCONA COUNTY**



CONCEPT - SUBJECT TO PRELIMINARY SURVEY AND DESIGN

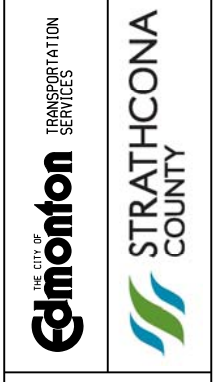
**34th Street**

Truck Turning Template WB-36 at 5 km/h  
76 Avenue

15m 0 30m

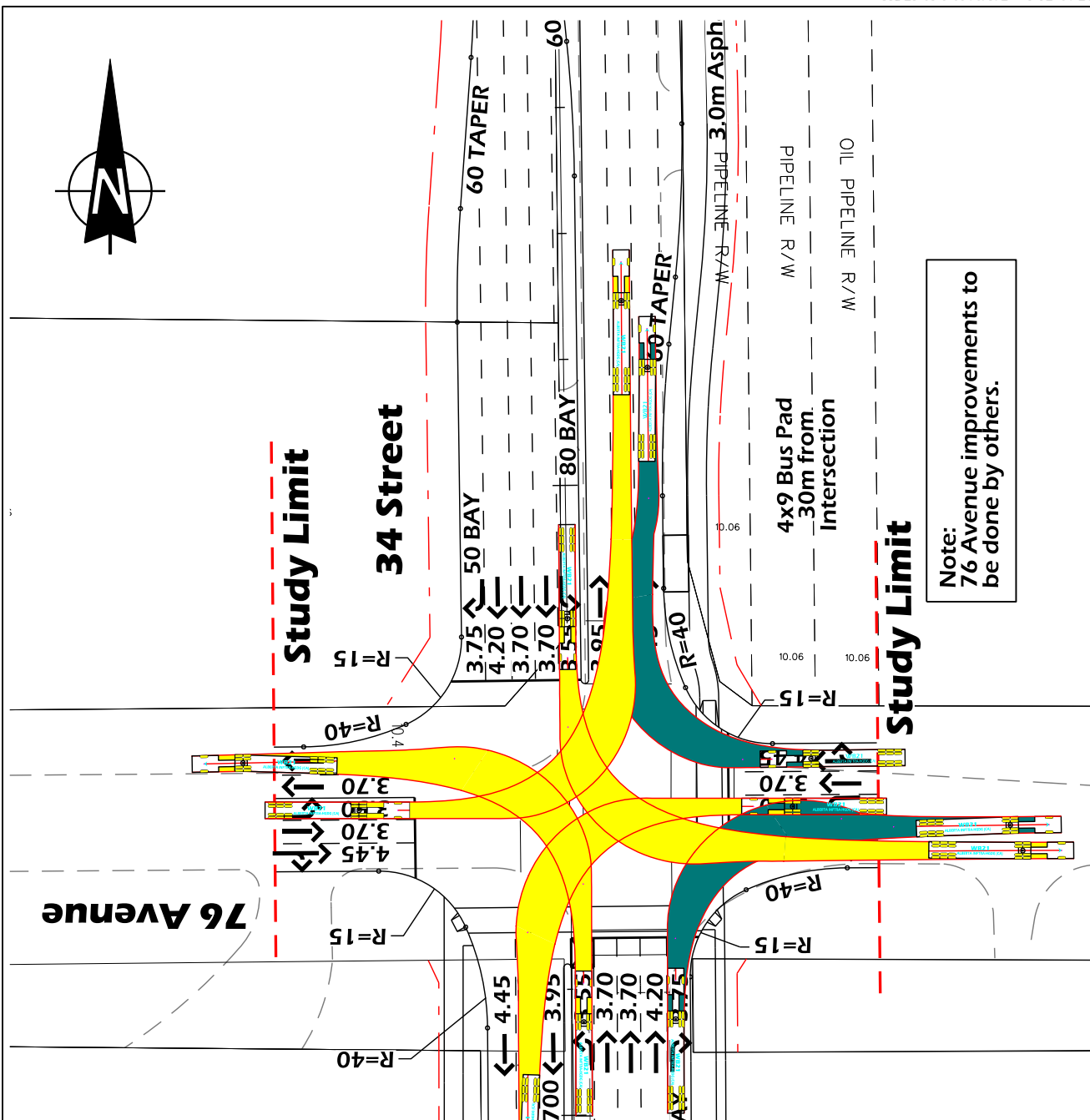
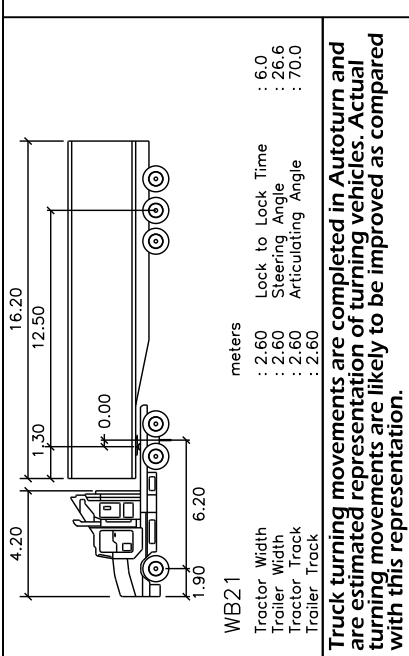
DRAWN: TD  
REVIEWED:  
DATE: 2013 05 16

**Sht 7-1 - 76 Ave**



**LEGEND**

- Left Turn Path
- Right Turn Path



Note:  
76 Avenue improvements to be done by others.

CONCEPT - SUBJECT TO PRELIMINARY SURVEY AND DESIGN

**34th Street**  
 Truck Turning Template WB-21 at 5 km/h  
 76 Avenue

15m 0 30m

DRAWN: TD  
 REVIEWED:  
 DATE: 2013 05 16

**Sht 7-2 - 76 Ave**

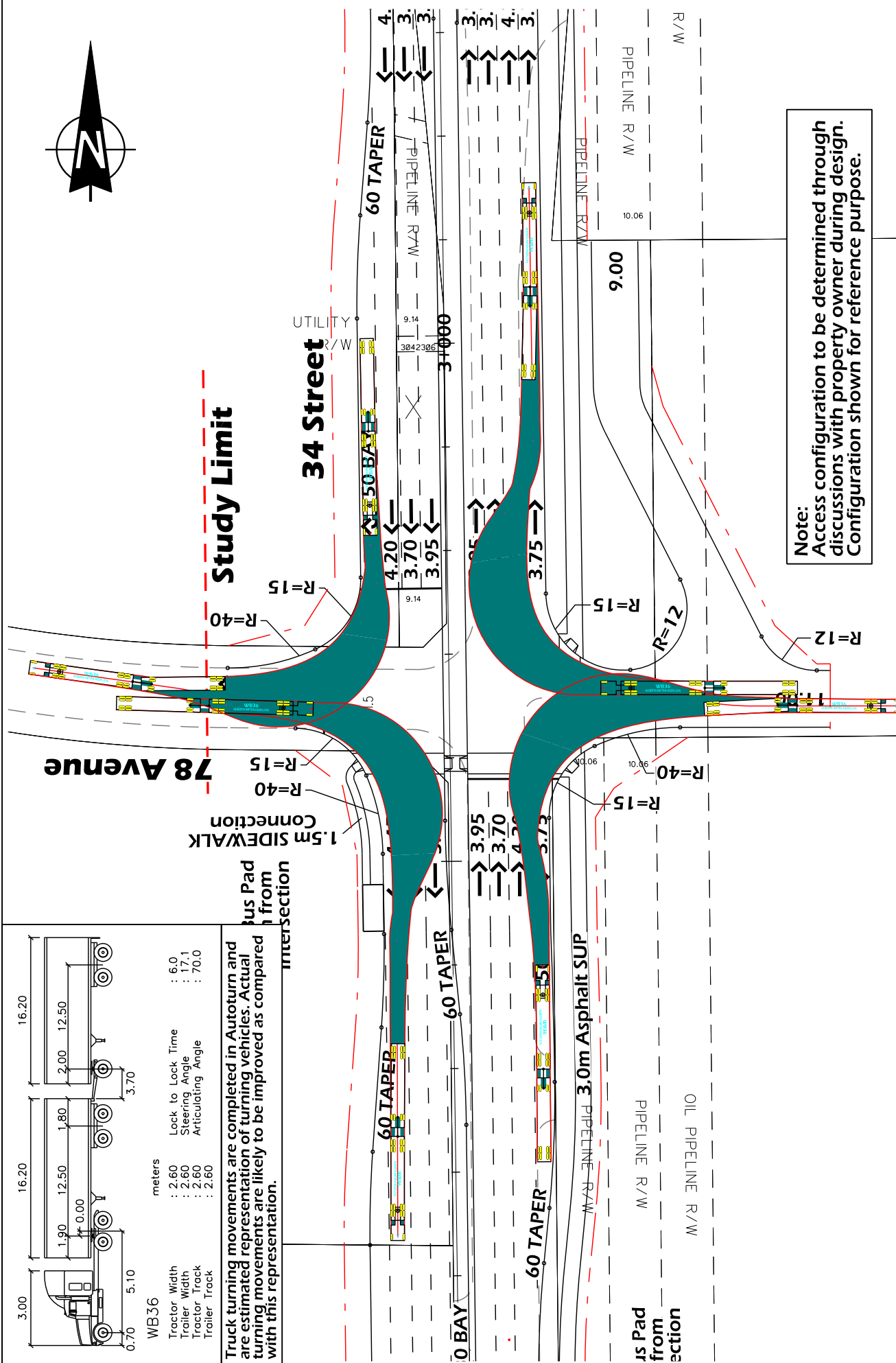
THE CITY OF **Edmonton** TRANSPORTATION SERVICES

**McElhanney**  
 Consulting Services Ltd.

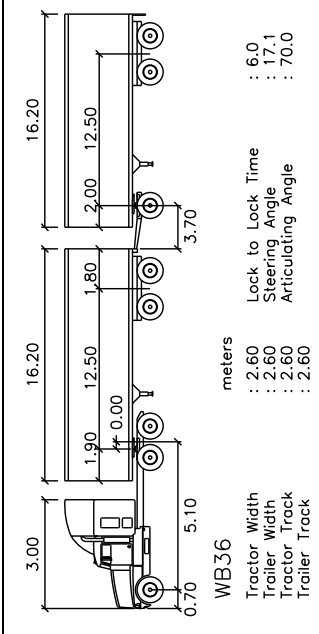
**STRATHCONA COUNTY**

**LEGEND**

- Left Turn Path
- Right Turn Path



**Note:**  
 Access configuration to be determined through discussions with property owner during design.  
 Configuration shown for reference purpose.

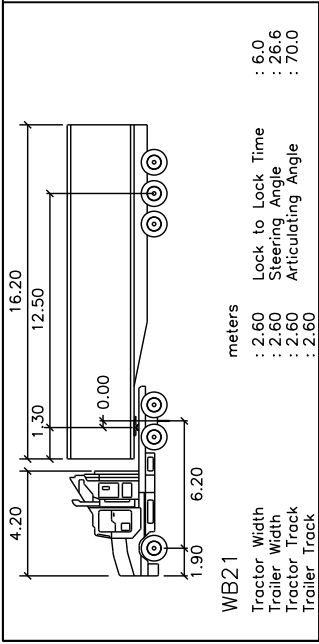


Truck turning movements are completed in Autoturn and are estimated representation of turning vehicles. Actual turning movements are likely to be improved as compared with this representation.

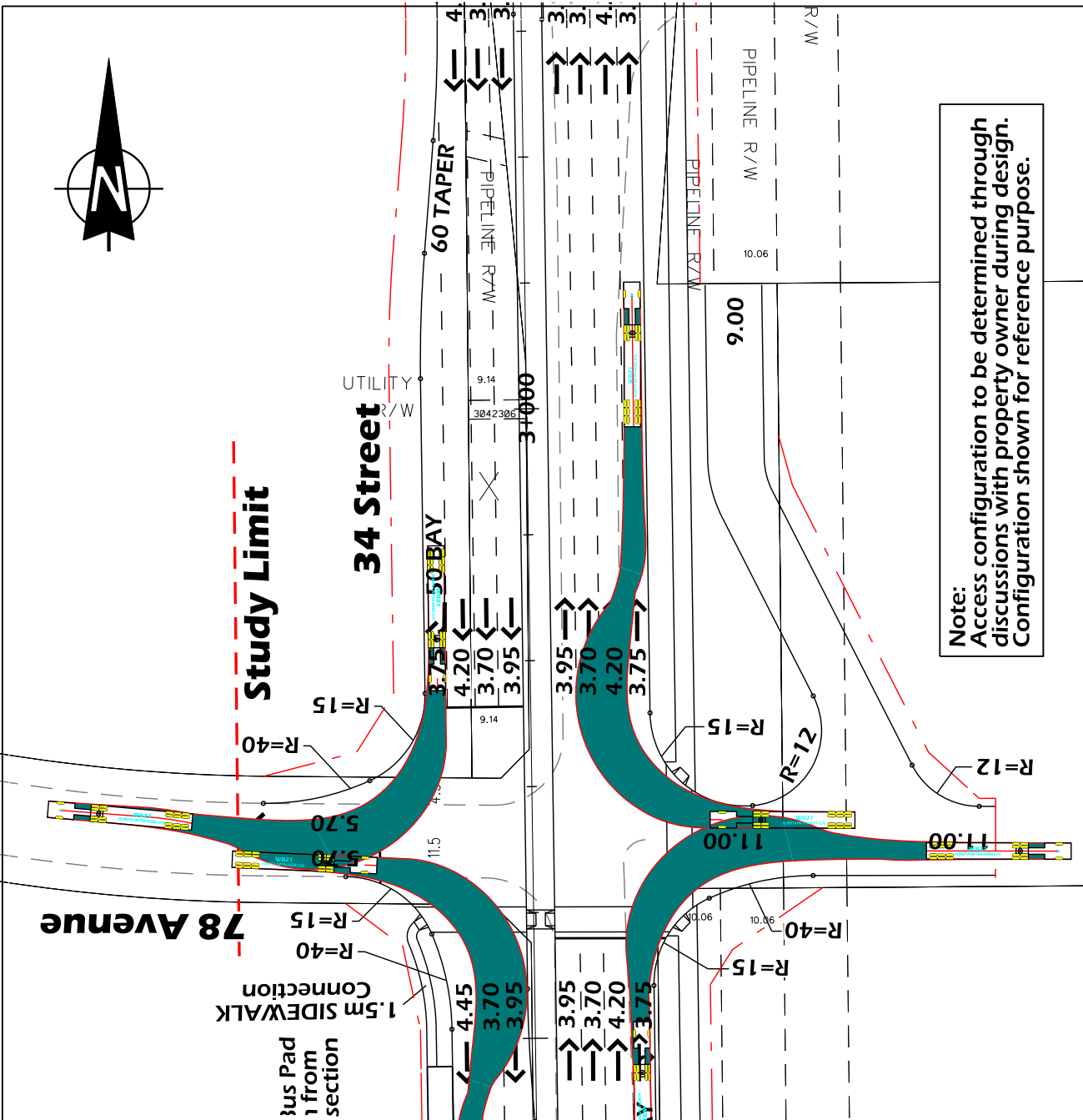
<p><b>LEGEND</b></p> <ul style="list-style-type: none"> <li><span style="display: inline-block; width: 15px; height: 15px; background-color: yellow; border: 1px solid black;"></span> Left Turn Path</li> <li><span style="display: inline-block; width: 15px; height: 15px; background-color: teal; border: 1px solid black;"></span> Right Turn Path</li> </ul>	<p>CONCEPT - SUBJECT TO PRELIMINARY SURVEY AND DESIGN</p>
	<p><b>34th Street</b>                  Truck Turning Template WB-36 at 5 km/h                  78 Avenue</p>
<p>THE CITY OF <b>Edmonton</b> TRANSPORTATION SERVICES</p>	<p>STRATHCONA COUNTY</p>
<p><b>McElhanney</b>                  Consulting Services Ltd.</p>	<p>15m 0 30m</p> <p>DRAWN: TD                  REVIEWED:                  DATE: 2013 05 16</p> <p><b>Sht 8-1 - 78 Ave</b></p>





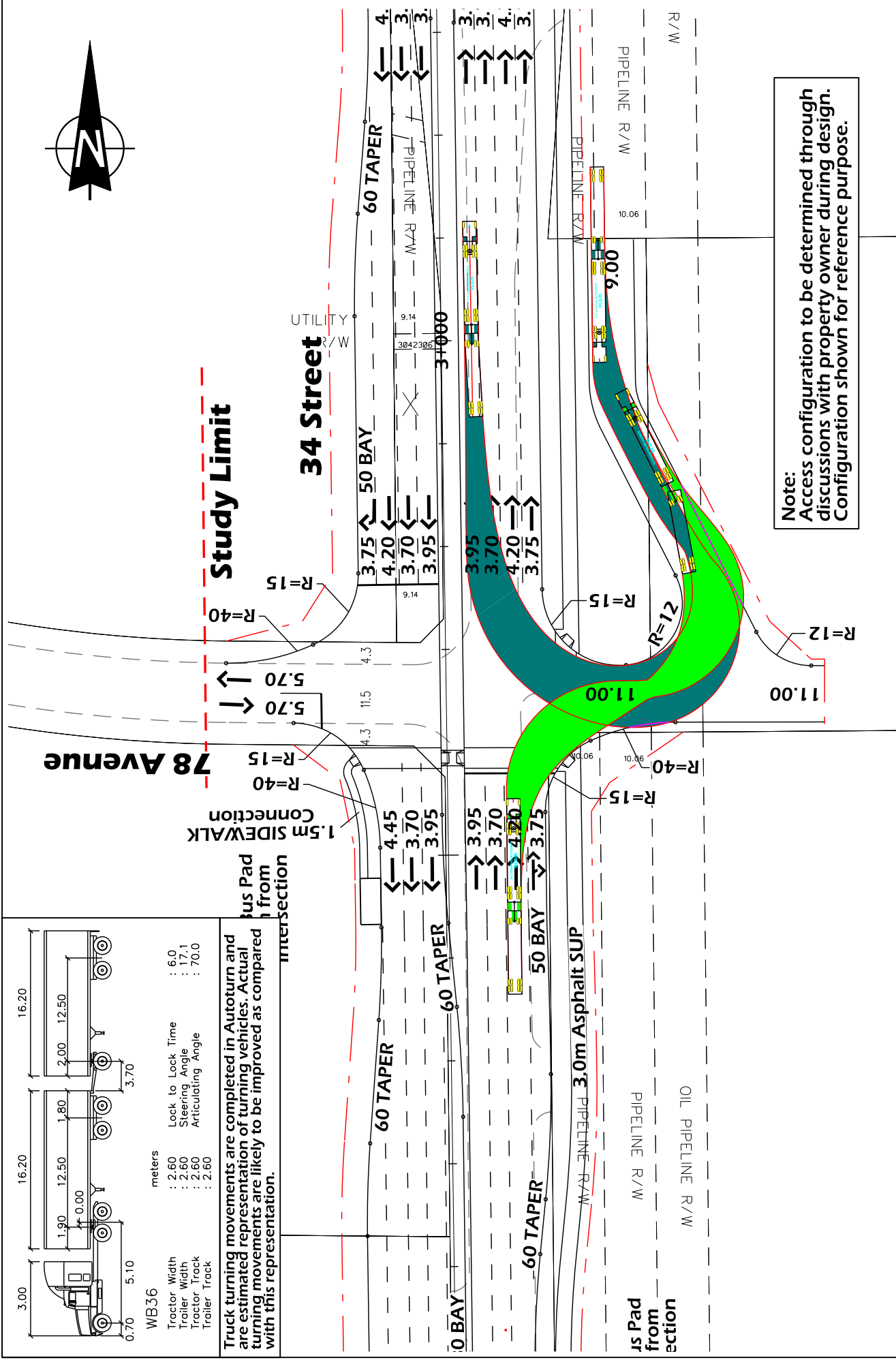


Truck turning movements are completed in Autoturn and are estimated representation of turning vehicles. Actual turning movements are likely to be improved as compared with this representation.

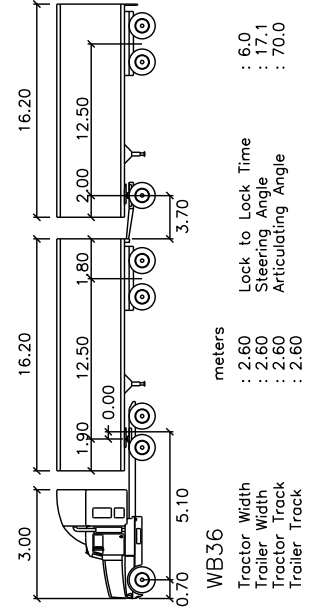


**Note:**  
 Access configuration to be determined through discussions with property owner during design.  
 Configuration shown for reference purpose.

<p><b>LEGEND</b></p> <p>Left Turn Path</p> <p>Right Turn Path</p>	<p>CONCEPT - SUBJECT TO PRELIMINARY SURVEY AND DESIGN</p>	
	<p><b>34th Street</b></p> <p>Truck Turning Template WB-21 at 5 km/h</p> <p>78 Avenue</p>	
<p>Edmonton TRANSPORTATION SERVICES</p> <p>STRATHCONA COUNTY</p>		<p>McElhanney Consulting Services Ltd.</p>
<p>15m 0 30m</p> <p>DRAWN: TD                  REVIEWED:                  DATE: 2013 05 16</p>		<p><b>Sht 8-2 - 78 Ave</b></p>

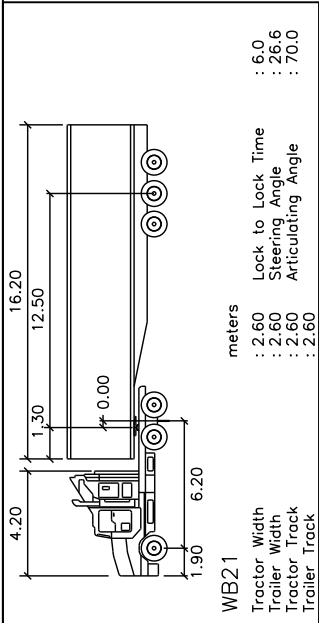


**Note:**  
Access configuration to be determined through discussions with property owner during design. Configuration shown for reference purpose.

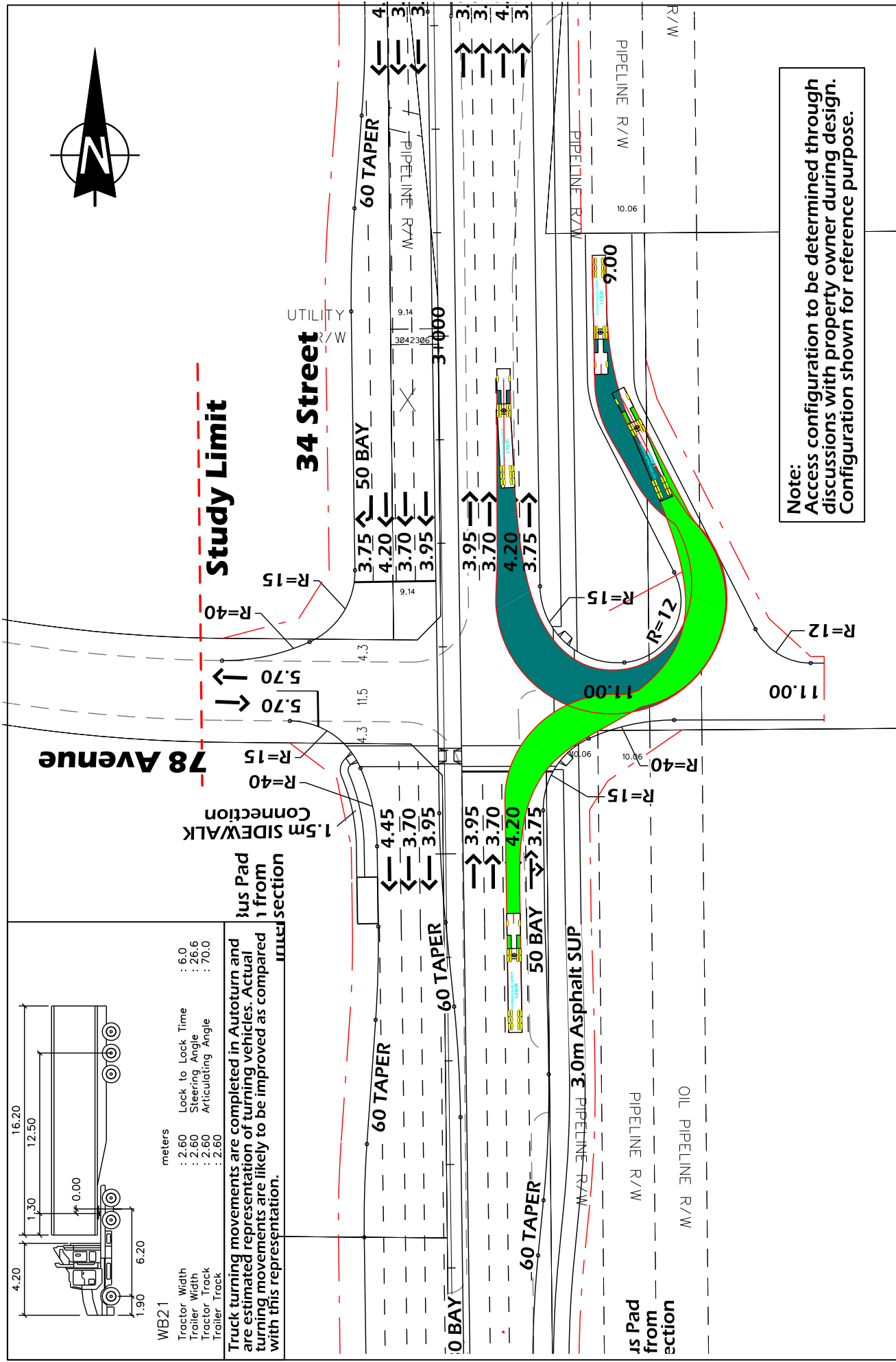


Truck turning movements are completed in Autoturn and are estimated representation of turning vehicles. Actual turning movements are likely to be improved as compared with this representation.

<p><b>LEGEND</b></p> <ul style="list-style-type: none"> <li>Left Turn Path</li> <li>Right Turn Path</li> </ul>	<p>CONCEPT - SUBJECT TO PRELIMINARY SURVEY AND DESIGN</p> <p><b>34th Street</b></p> <p>Truck Turning Template WB-36 at 5 km/h 78 Avenue</p>	<p>15m 0 30m</p> <p>DRAWN: TD REVIEWED: DATE: 2013 05 16</p>	<p><b>Sht 8-3 - 78 Ave</b></p>

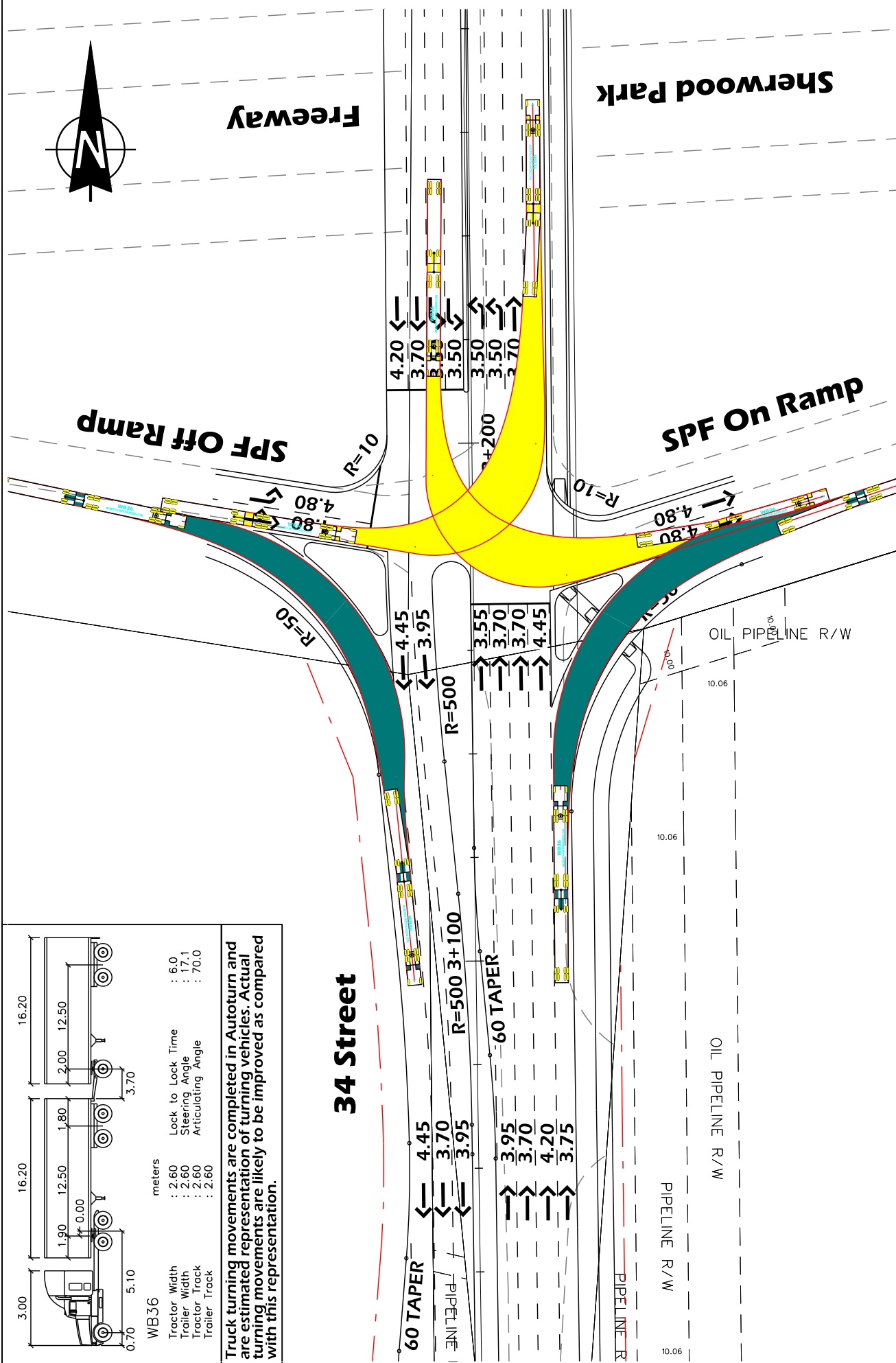


Truck turning movements are completed in Autoturn and are estimated representation of turning vehicles. Actual turning movements are likely to be improved as compared with this representation.



**Note:**  
 Access configuration to be determined through discussions with property owner during design.  
 Configuration shown for reference purpose.

<b>LEGEND</b> Left Turn Path Right Turn Path	 <b>Edmonton</b> TRANSPORTATION SERVICES  <b>STRATHCONA COUNTY</b>	CONCEPT - SUBJECT TO PRELIMINARY SURVEY AND DESIGN	
		<b>34th Street</b> Truck Turning Template WB-21 at 5 km/h 78 Avenue	
15m 0 30m DRAWN: TD REVIEWED: [blank] DATE: 2013 05 16		<b>Sht 8-4 - 78 Ave</b>	



CONCEPT - SUBJECT TO PRELIMINARY SURVEY AND DESIGN

**34th Street**

Truck Turning Template WB-36 at 5 km/h  
Sherwood Park Freeway South Ramp

15m 0 30m

DRAWN: TD  
REVIEWED:  
DATE: 2013 05 16

**Sht 9-1 - SPF South**

THE CITY OF **Edmonton** TRANSPORTATION SERVICES

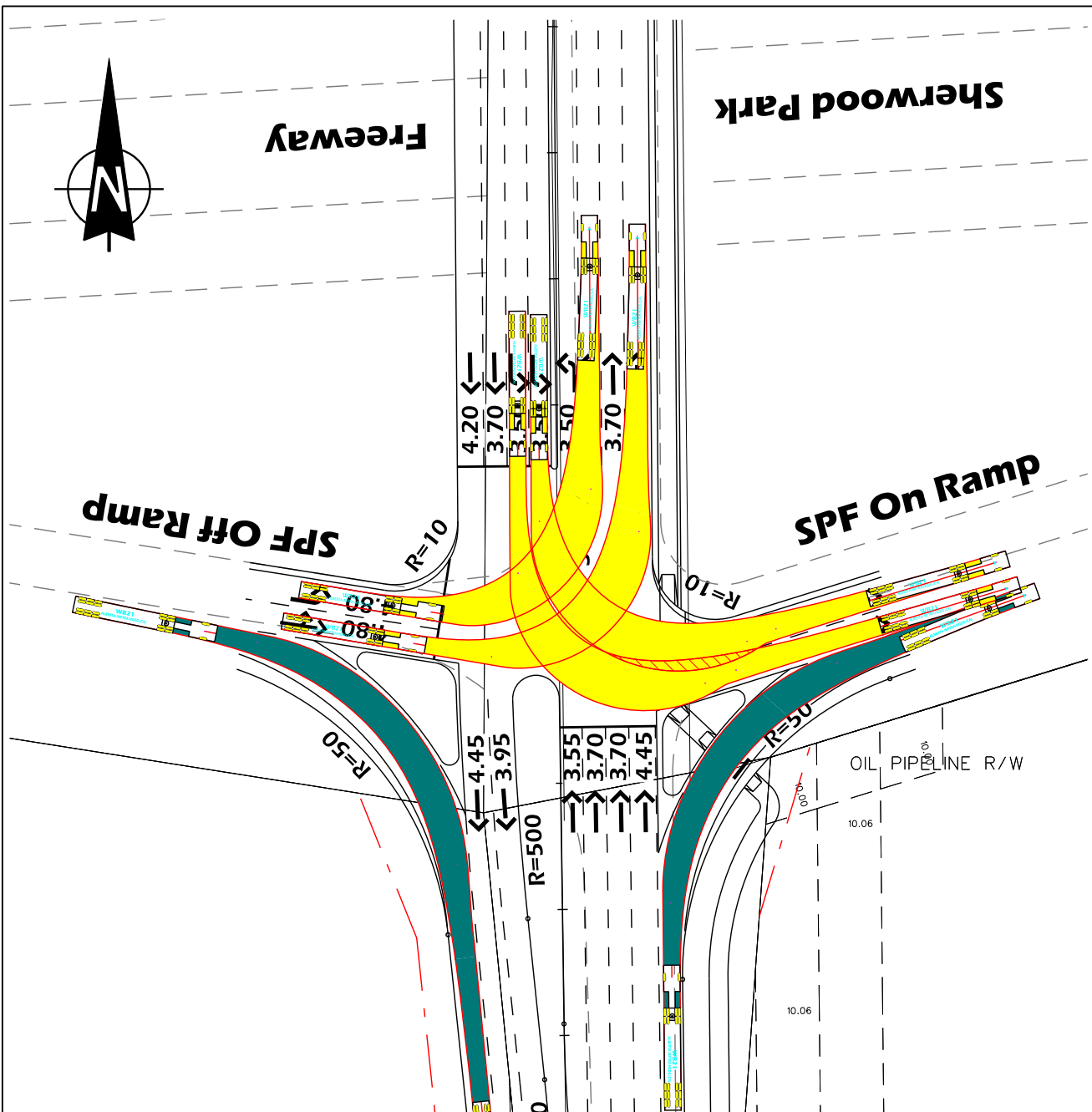
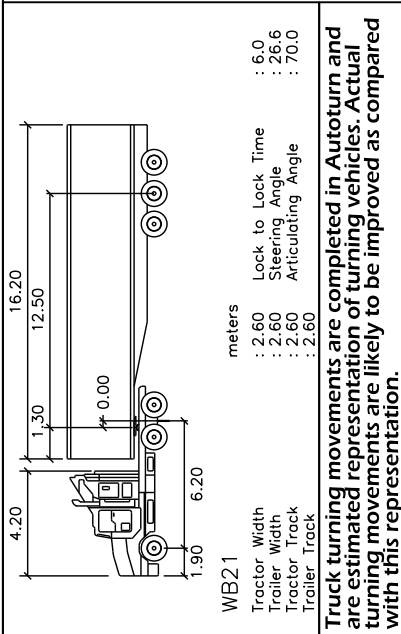
**STRATHCONA COUNTY**

**McElhanney**  
Consulting Services Ltd.

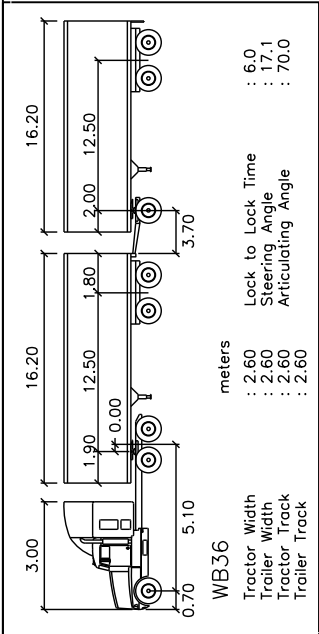
**LEGEND**

- Left Turn Path
- Right Turn Path

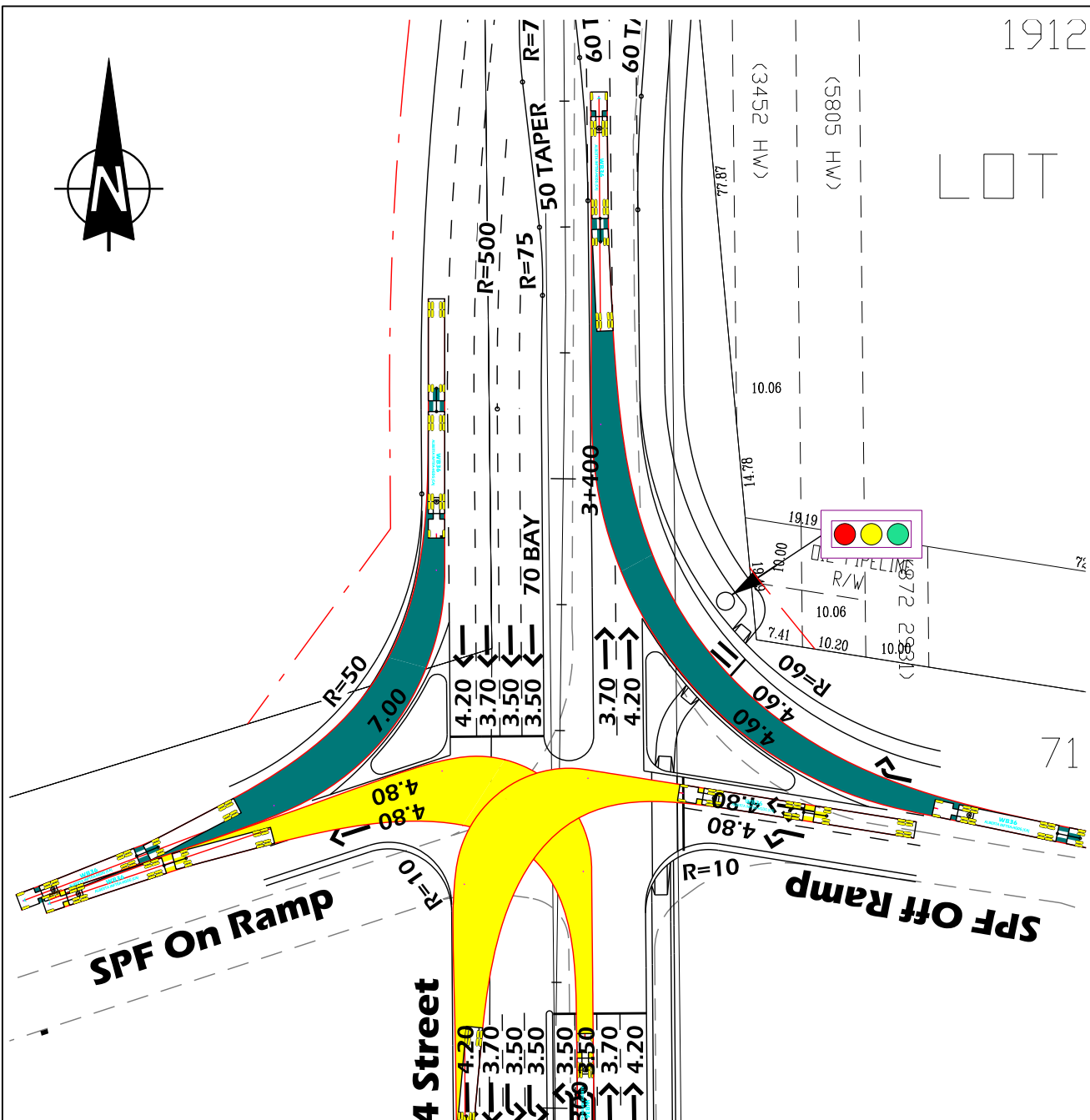




<b>LEGEND</b> Left Turn Path Right Turn Path	CONCEPT - SUBJECT TO PRELIMINARY SURVEY AND DESIGN <b>34th Street</b> Truck Turning Template WB-21 at 5 km/h Sherwood Park Freeway South Ramp	DRAWN: TD REVIEWED: DATE: 2013 05 16	15m 0 30m	<b>Sht 9-2 - SPF South</b>
			 THE CITY OF EDMONTON TRANSPORTATION SERVICES	 STRATHCONA COUNTY



Truck turning movements are completed in Autoturn and are estimated representation of turning vehicles. Actual turning movements are likely to be improved as compared with this representation.



CONCEPT - SUBJECT TO PRELIMINARY SURVEY AND DESIGN

**34th Street**

Truck Turning Template WB-36 at 5 km/h  
Sherwood Park Freeway South Ramp

DRAWN: TD  
REVIEWED:  
DATE: 2013 05 16

15m 0 30m

**Sht 10-1 - SPF North**

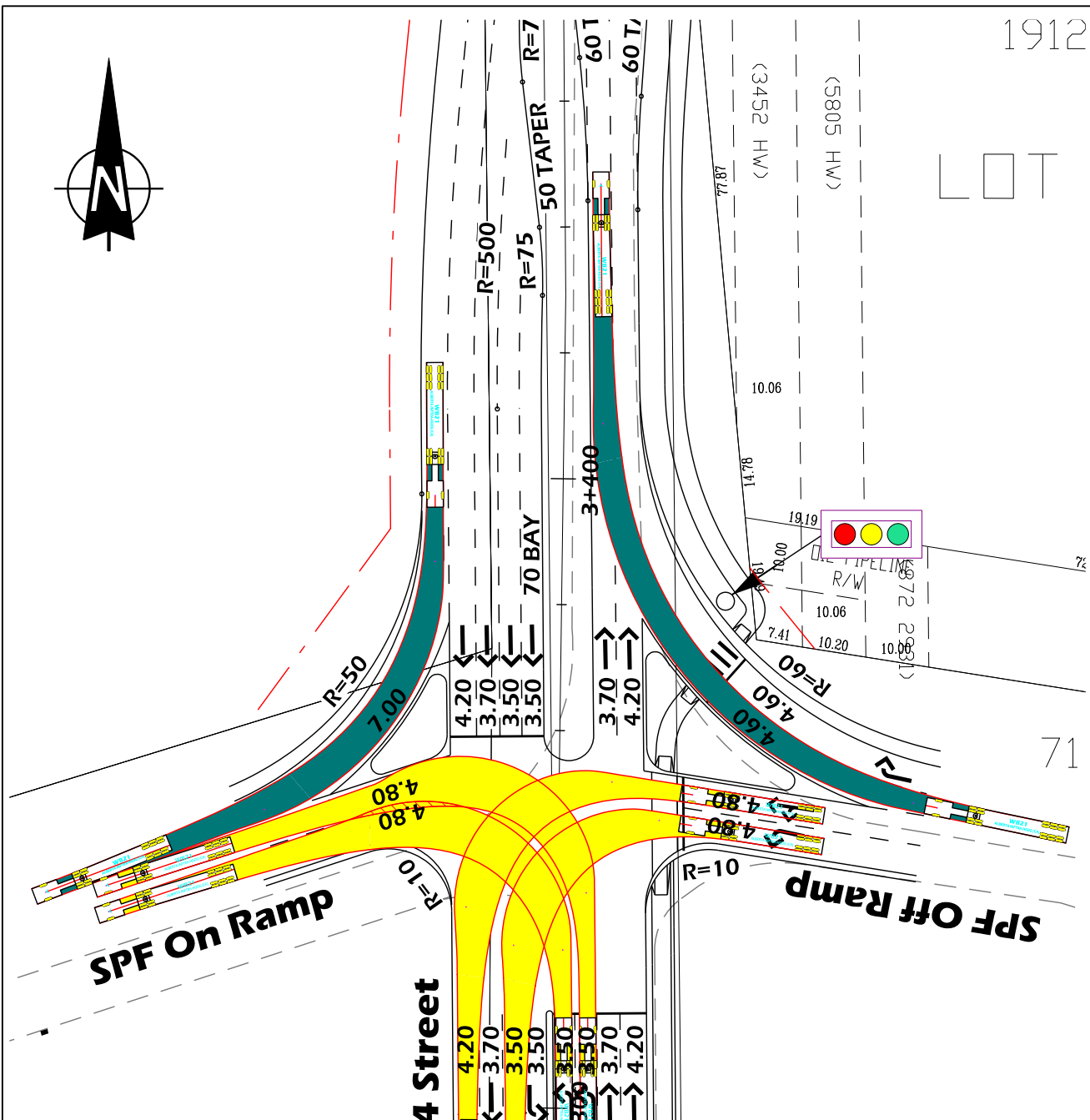
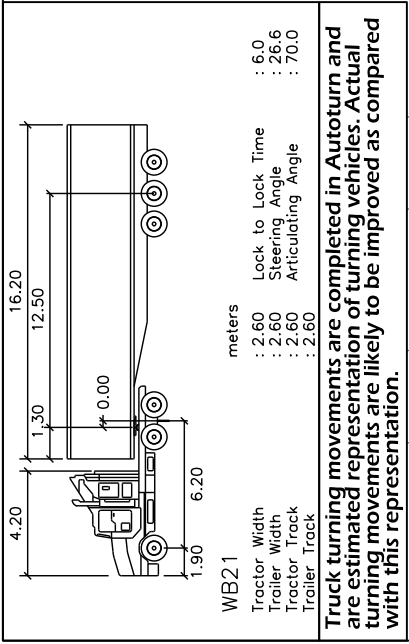
THE CITY OF **Edmonton** TRANSPORTATION SERVICES

**STRATHCONA COUNTY**

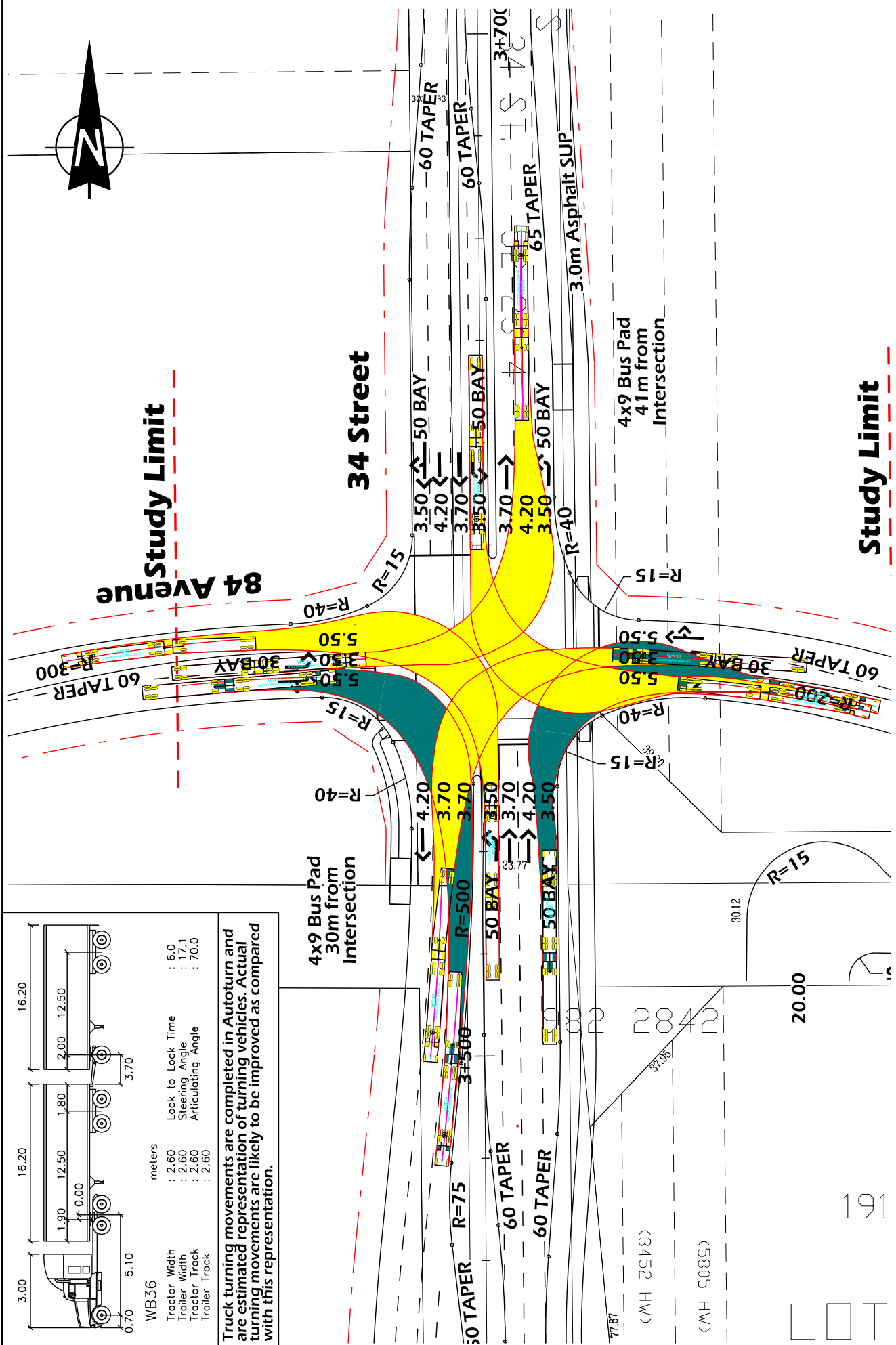
**McElhanney**  
Consulting Services Ltd.

**LEGEND**

- Left Turn Path
- Right Turn Path

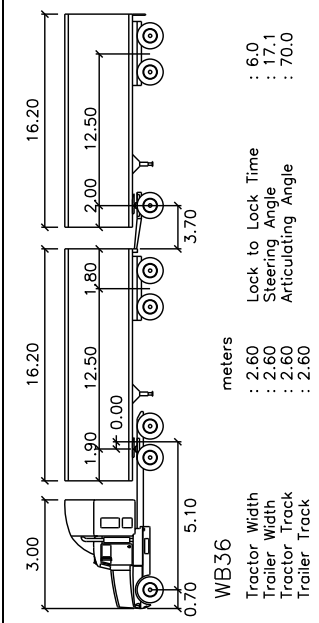


<p><b>LEGEND</b></p> <ul style="list-style-type: none"> <li>Left Turn Path</li> <li>Right Turn Path</li> </ul>		<p>CONCEPT - SUBJECT TO PRELIMINARY SURVEY AND DESIGN</p> <p><b>34th Street</b></p> <p>Truck Turning Template WB-21 at 5 km/h Sherwood Park Freeway North Ramp</p>	<p>Edmonton TRANSPORTATION SERVICES</p> <p>STRATHCONA COUNTY</p>	<p>McElhanney Consulting Services Ltd.</p>	<p>1912</p> <p>LOT</p> <p>(5805 HW)</p> <p>(3452 HW)</p> <p>15m 0 30m</p> <p>15m</p>
<p>1912</p> <p>LOT</p> <p>(5805 HW)</p> <p>(3452 HW)</p> <p>15m 0 30m</p> <p>15m</p>		<p>CONCEPT - SUBJECT TO PRELIMINARY SURVEY AND DESIGN</p> <p><b>34th Street</b></p> <p>Truck Turning Template WB-21 at 5 km/h Sherwood Park Freeway North Ramp</p>	<p>Edmonton TRANSPORTATION SERVICES</p> <p>STRATHCONA COUNTY</p>	<p>McElhanney Consulting Services Ltd.</p>	<p>1912</p> <p>LOT</p> <p>(5805 HW)</p> <p>(3452 HW)</p> <p>15m 0 30m</p> <p>15m</p>



**Study Limit**

**Study Limit**



WB36 meters  
 Tractor Width : 2.60  
 Trailer Width : 2.80  
 Tractor Track : 2.80  
 Trailer Track : 2.80  
 Lock to Lock Time : 6.0  
 Steering Angle : 17.1  
 Articulating Angle : 70.0

Truck turning movements are completed in Autoturn and are estimated representation of turning vehicles. Actual turning movements are likely to be improved as compared with this representation.

CONCEPT - SUBJECT TO PRELIMINARY SURVEY AND DESIGN

**34th Street**  
 Truck Turning Template WB-36 at 5 km/h  
 84 Avenue

15m 0 30m

DRAWN: TD  
 REVIEWED:  
 DATE: 2013 05 16

**Sht 11-1 - 84 Ave**

THE CITY OF **Edmonton** TRANSPORTATION SERVICES

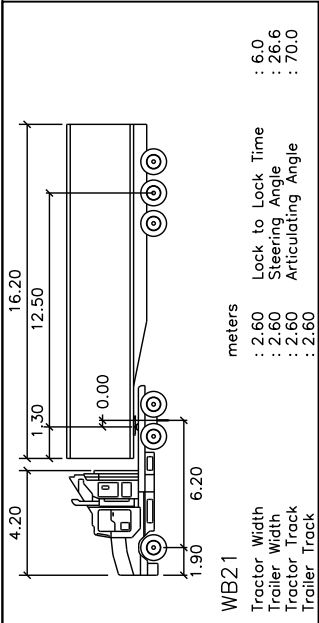
**STRATHCONA COUNTY**

**McElhanney**  
 Consulting Services Ltd.

**LEGEND**

Left Turn Path

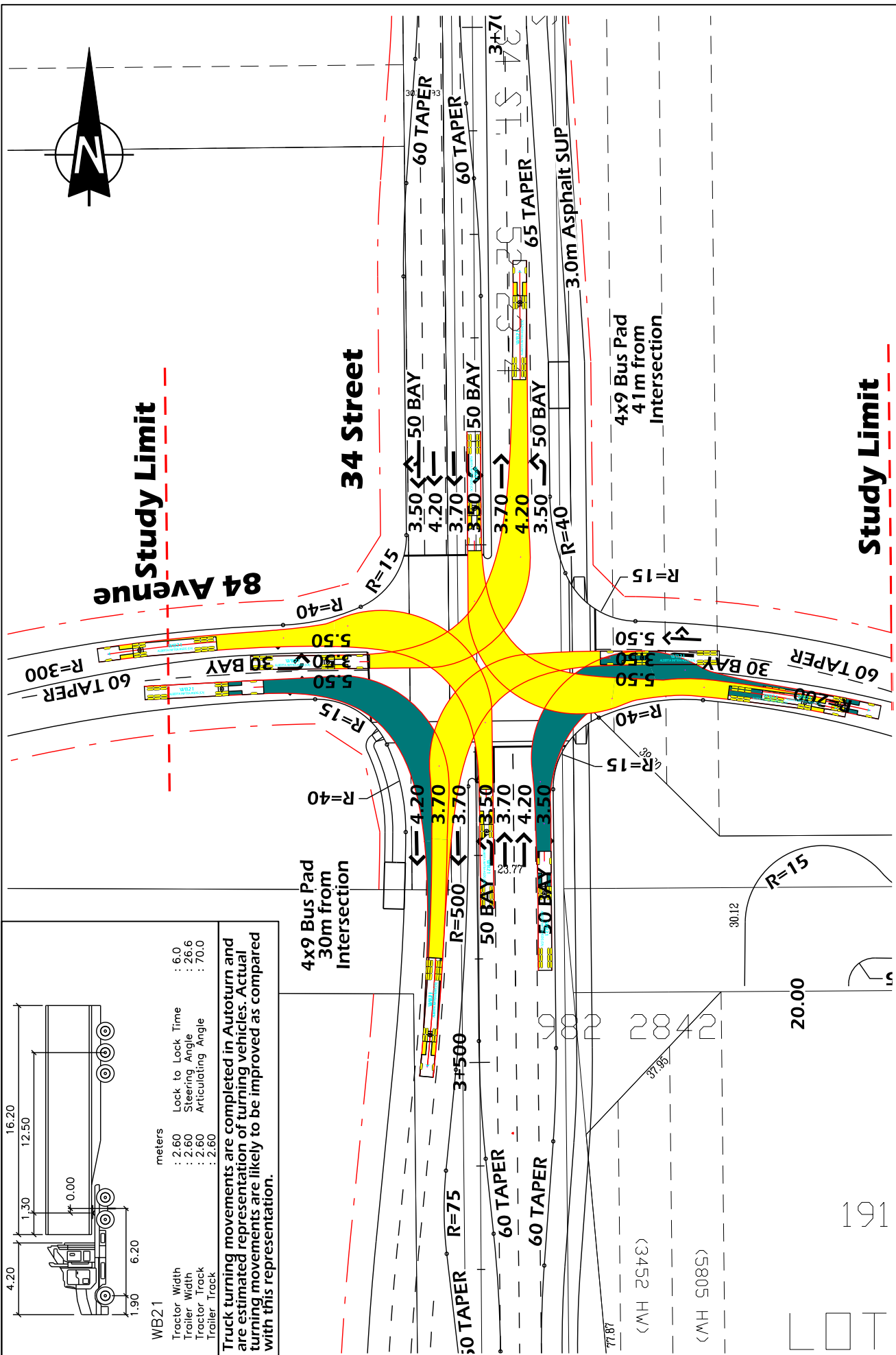
Right Turn Path



WB21 meters

Tractor Width	: 2.60	Lock to Lock Time	: 6.0
Tractor Track	: 2.60	Steering Angle	: 26.6
Trailer Track	: 2.60	Articulating Angle	: 70.0

Truck turning movements are completed in Autoturn and are estimated representation of turning vehicles. Actual turning movements are likely to be improved as compared with this representation.



**Study Limit**

**Study Limit**

CONCEPT - SUBJECT TO PRELIMINARY SURVEY AND DESIGN

**34th Street**  
Truck Turning Template WB-21 at 5 km/h  
78 Avenue



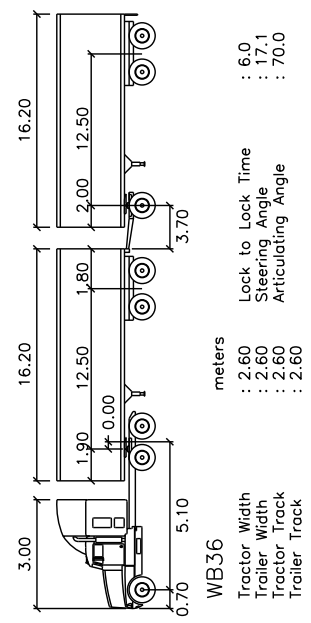
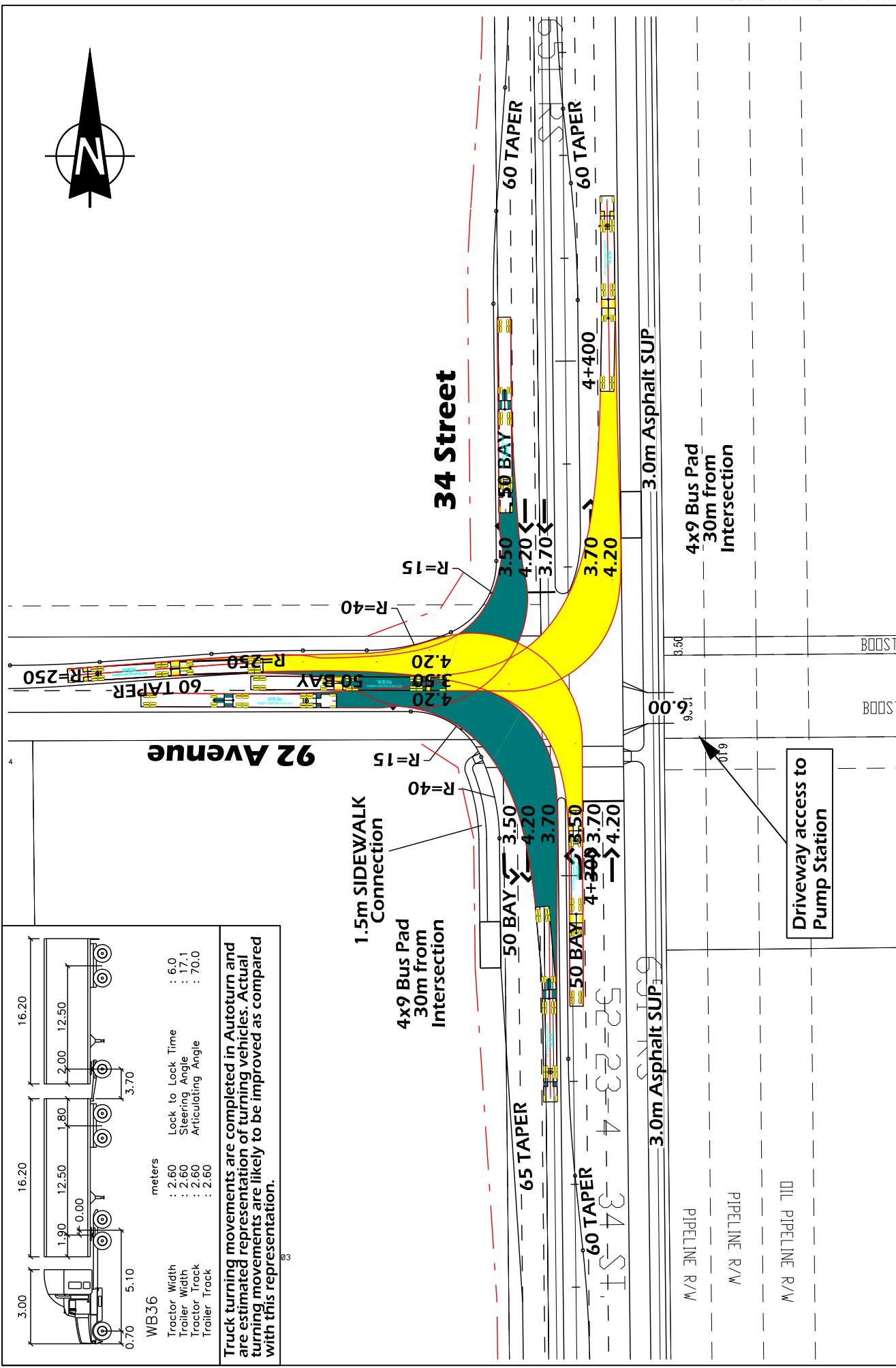
**LEGEND**

- Left Turn Path
- Right Turn Path



15m 0 30m  
DRAWN: TD  
REVIEWED:  
DATE: 2013 05 16  
**Sht 11-2 - 84 Ave**





Truck turning movements are completed in Autoturn and are estimated representation of turning vehicles. Actual turning movements are likely to be improved as compared with this representation.

**LEGEND**

- Left Turn Path
- Right Turn Path

CONCEPT - SUBJECT TO PRELIMINARY SURVEY AND DESIGN

**34th Street**

Truck Turning Template WB-36 at 5 km/h  
92 Avenue

15m 0 30m

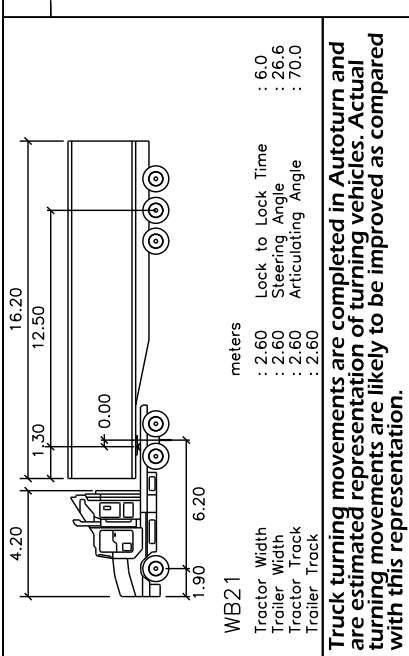
DRAWN: TD  
REVIEWED:  
DATE: 2013 05 16

**Edmonton** TRANSPORTATION SERVICES

**McElhanney** Consulting Services Ltd.

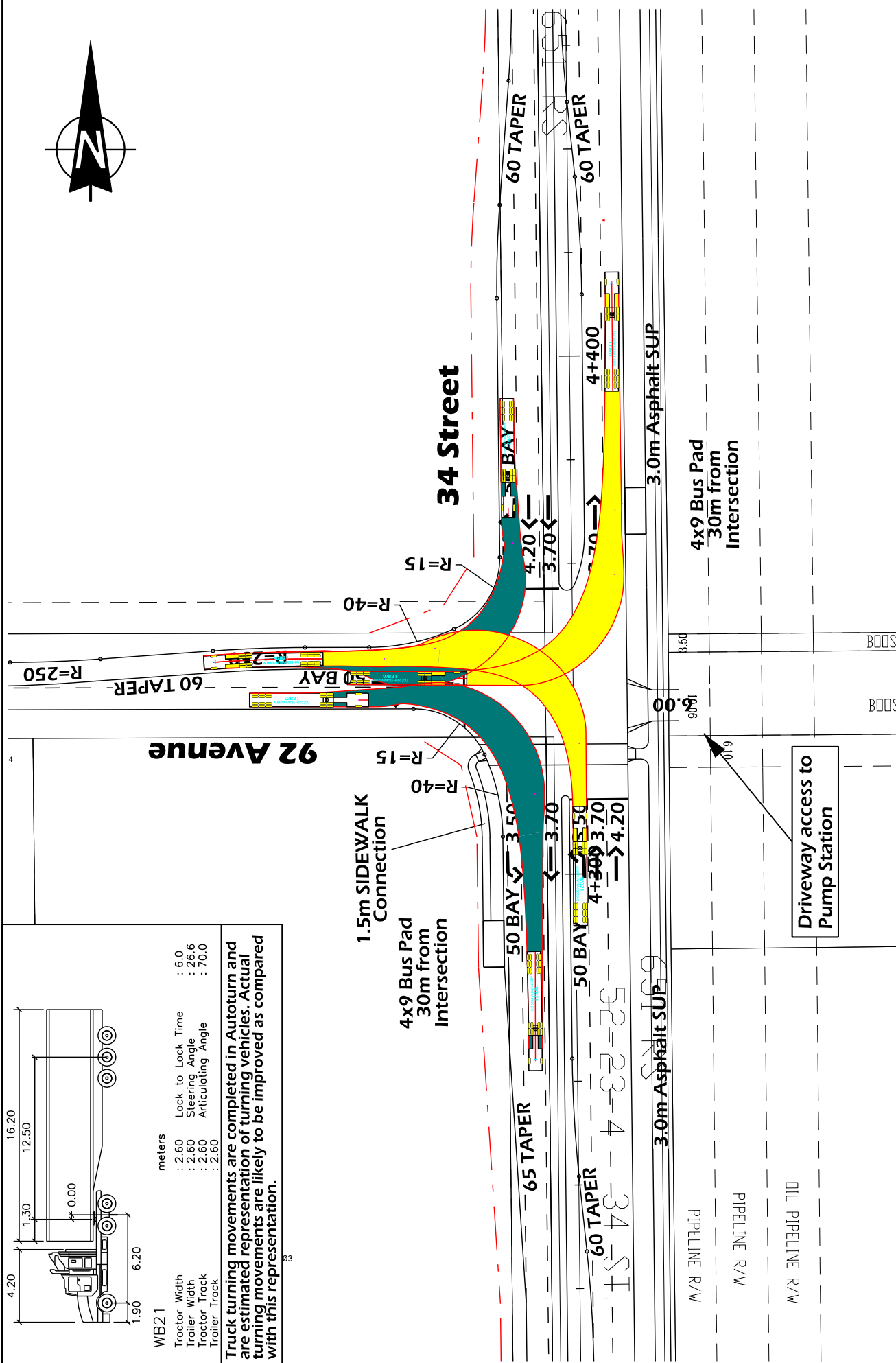
**STRATHCONA COUNTY**

**Sht 12-1 - 92 Ave**



WB21 meters	
Tractor Width	: 2.60
Trailer Width	: 2.60
Tractor Track	: 2.60
Trailer Track	: 2.60
Lock to Lock Time	: 6.0
Steering Angle	: 26.6
Articulating Angle	: 70.0

Truck turning movements are completed in Autoturn and are estimated representation of turning vehicles. Actual turning movements are likely to be improved as compared with this representation.



**LEGEND**

- Left Turn Path
- Right Turn Path

CONCEPT - SUBJECT TO PRELIMINARY SURVEY AND DESIGN

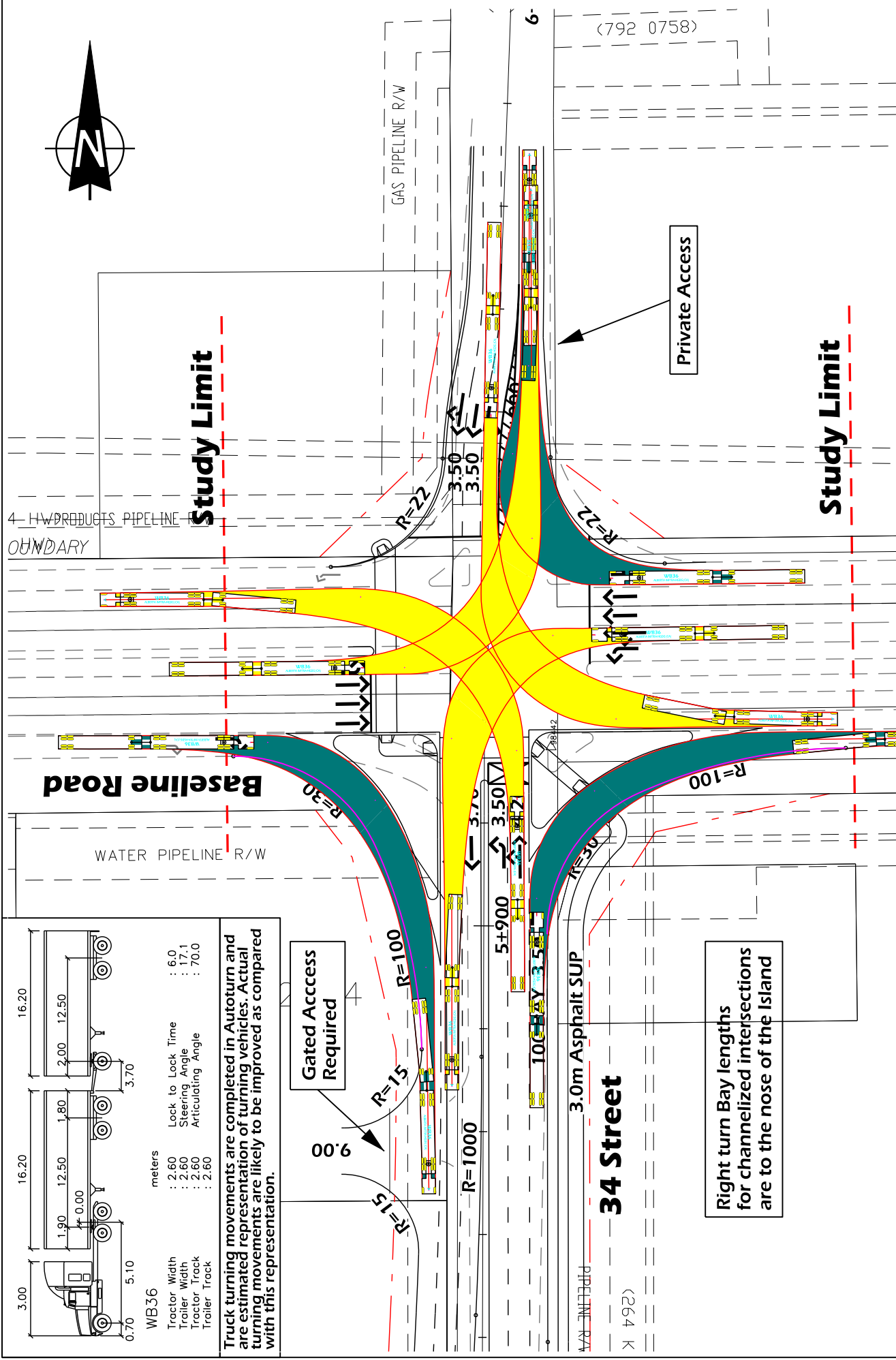
**34th Street**  
Truck Turning Template WB-21 at 5 km/h  
92 Avenue

15m 0 30m

DRAWN: TD  
REVIEWED:  
DATE: 2013 05 16

**Edmonton** TRANSPORTATION SERVICES  
**McElhanney** Consulting Services Ltd.  
**STRATHCONA COUNTY**

Sht 12-2 - 92 Ave



# Baseline Road

# 34 Street

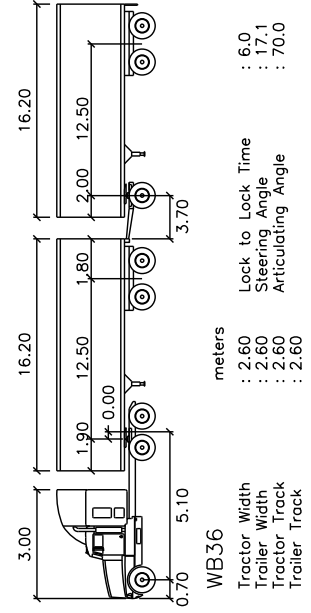
**Study Limit**

**Study Limit**

Private Access

Right turn Bay lengths for channelized intersections are to the nose of the Island

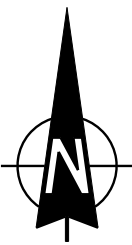
Gated Access Required



- WB36**
- Tractor Width : 3.00
  - Trailer Width : 1.90
  - Tractor Track : 12.50
  - Trailer Track : 2.00
  - Lock to Lock Time : 6.0
  - Steering Angle : 17.1
  - Articulating Angle : 70.0

Truck turning movements are completed in Autoturn and are estimated representation of turning vehicles. Actual turning movements are likely to be improved as compared with this representation.

<p>CONCEPT - SUBJECT TO PRELIMINARY SURVEY AND DESIGN</p> <p><b>34th Street</b></p> <p>Truck Turning Template WB-36 at 5 km/h</p> <p>Baseline Road</p>		<p>DRAWN: TD</p> <p>REVIEWED:</p> <p>DATE: 2013 05 16</p> <p>30m</p> <p>15m</p>	<p>Sht 13-1 - Baseline</p>
<p>THE CITY OF</p> <p><b>Edmonton</b></p> <p>TRANSPORTATION SERVICES</p>	<p>STRATHCONA COUNTY</p>	<p><b>McElhanney</b></p> <p>Consulting Services Ltd.</p>	
<p><b>LEGEND</b></p> <ul style="list-style-type: none"> <li><span style="display: inline-block; width: 20px; height: 10px; background-color: yellow; border: 1px solid black;"></span> Left Turn Path</li> <li><span style="display: inline-block; width: 20px; height: 10px; background-color: teal; border: 1px solid black;"></span> Right Turn Path</li> </ul>			



4-HWDR PRODUCTS PIPELINE BOUNDARY

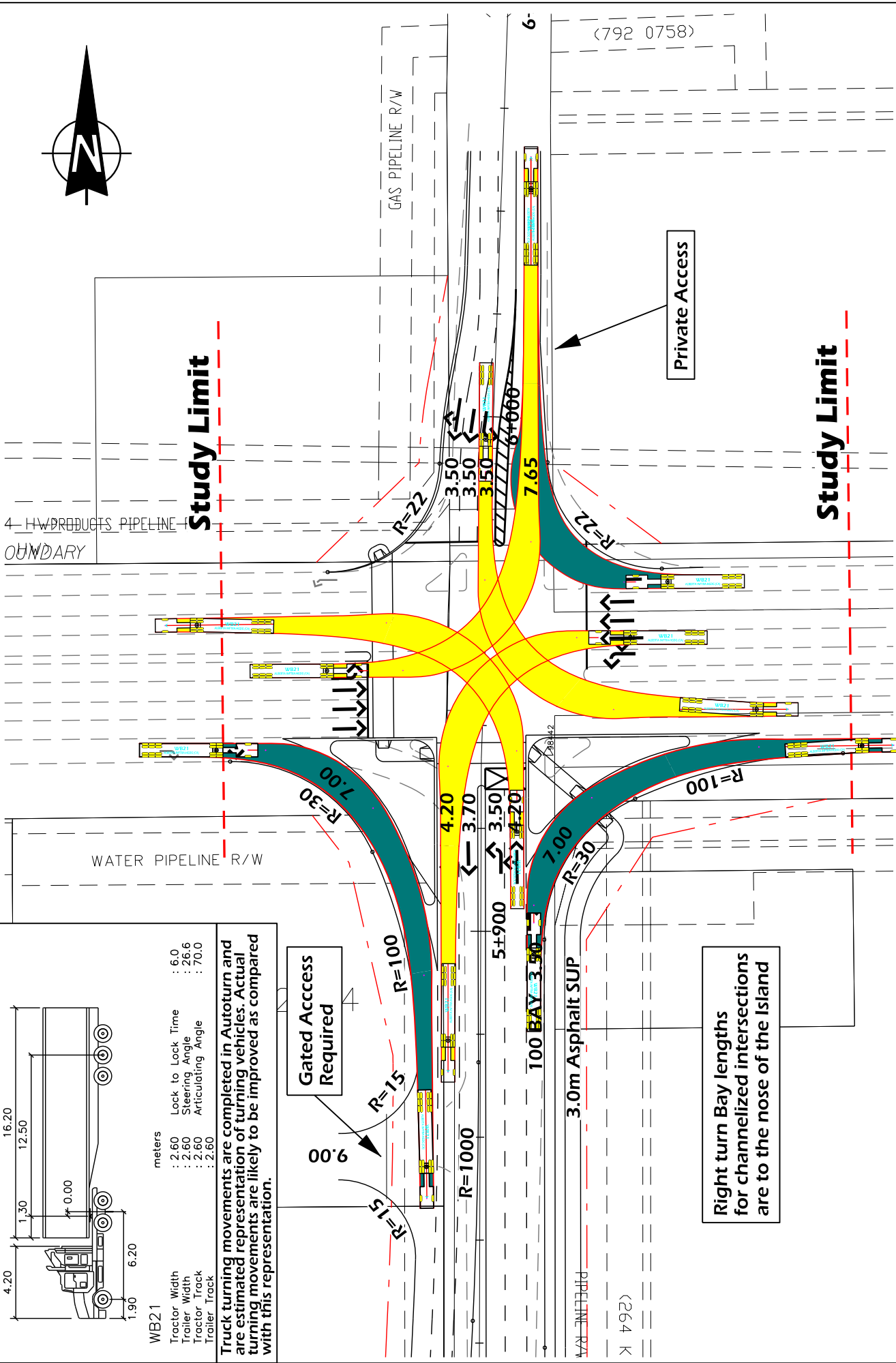
GAS PIPELINE R/W

WATER PIPELINE R/W

(792 0758)

(264 K

6-



**WB21**  
 meters  
 Tractor Width : 4.20  
 Trailer Width : 1.90  
 Tractor Track : 1.30  
 Trailer Track : 6.20  
 Lock to Lock Time : 6.0  
 Steering Angle : 26.6  
 Articulating Angle : 70.0  
 : 2.60  
 : 2.60

Truck turning movements are completed in Autoturn and are estimated representation of turning vehicles. Actual turning movements are likely to be improved as compared with this representation.

**LEGEND**

- Left Turn Path
- Right Turn Path

CONCEPT - SUBJECT TO PRELIMINARY SURVEY AND DESIGN

**34th Street**  
 Truck Turning Template WB-21 at 5 km/h  
 Baseline Road

15m 0 30m

DRAWN: TD  
 REVIEWED:  
 DATE: 2013 05 16

THE CITY OF **Edmonton** TRANSPORTATION SERVICES

**McElhanney**  
 Consulting Services Ltd.

**STRATHCONA COUNTY**

Sht 13-2 - Baseline