

Ward 4

Township Road 534



Distribution of this newsletter

This newsletter is intended for residents of Ward 4, as shown on the map above. To economize, it is being distributed according to delivery zones of Canada Post, which do not coincide with ward boundaries. As a result, a limited number of households in Ward 3 may receive a copy. If so, please enjoy the information and note that the councillor for Ward 3 is Linda Osinchuk, 464-8149.

Peter Wlodarczak Councillor, Ward 4

Office Phone: 780-464-8146

Fax: 780-464-8114

E-mail: wlodarczak@strathcona.ab.ca



Strathcona County

www.strathcona.ab.ca

Ward 4 April 2008 update

From your councillor



Councillor Peter Wlodarczak

Hello to all the residents of Ward 4—both new and old.

I say “new and old” not in regard to residents—but about the ward boundaries. With the October 2007 election, the ward boundaries shifted, and I lost portions from the south but gained portions to the north and west.

Have a look at the adjacent map for the new boundaries. Regardless of what my boundaries are, I am here to serve all Ward 4 residents. Though we as councillors serve as councillors for the entire County, I am most mindful of the pressing need to ensure that the residents of Ward 4 are served to the best of my ability.

Difficult choices in 2008 budget

The budget deliberations this year were extremely difficult and Council had

to make some difficult choices which impacted the tax burden of residents.

Like any other family, group or organization, the County faces significant inflationary pressures from a number of sources. Costs have risen astronomically for the oil-related products that form a large part of the cost for road building and maintenance.

We also faced a difficult choice regarding our transit system. Our transit system is presently designed to primarily serve as a support for the commuter traffic. Over the years, Council has heard about the difficulty people face in getting quickly and routinely to other parts of Sherwood Park.

With the budget approval, public transit is now embarking on a program to turn the bus system into a proper

continued on page 2

What's inside?

Hospital construction starts soon . . .	2
Property tax rebate for seniors	3
Community notes	3
Emerald Hills Urban Village	3
New waste collection system	4
Centre in the Park/ Community Centre	4
Elk Island Catholic High School . . .	4
Traffic safety	4

From your Councillor, continued from page 1

bus service that will allow people to get from one spot to the other quickly. This will of course, not occur overnight as the planning and purchase of new buses will take some time.

Another topic on many minds is snow removal. Last year we changed the Snow Removal Policy to what we thought would reflect an increase in service, and regrettably, it did not meet the target. All of the urban Councillors received a number of complaints in this regard so we will be re-visiting the policy in the next couple of months to improve on it and hopefully we will get it right this time.

One issue that all of us hear about on a good number of occasions is the state of sidewalks in the winter. Some people do not shovel their sidewalks and unlike Edmonton, we have no bylaw to compel residents to clean them. Council has been advised that we get a higher rate of compliance without a bylaw than Edmonton, with one. I would be very interested in hearing your thoughts on this topic so if you can, please drop me an e-mail and let me know what you think.

If I may ever be of service, please do not hesitate to write. May God Bless Strathcona County. Best Regards.



Hospital construction starts soon

One of the most-anticipated facilities for our community will soon be under construction—the Strathcona County Hospital. The hospital will provide a one-stop approach to health care delivery, with both acute care and health promotion services at this one location.

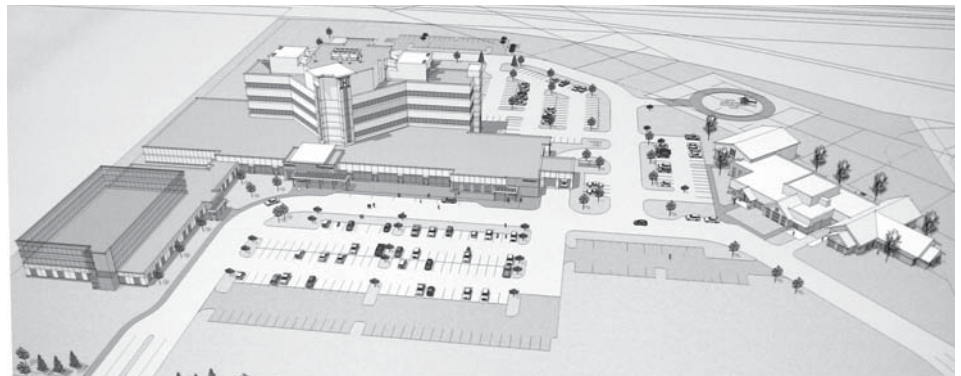
The hospital site is west of Clover Bar Road north of Emerald Drive.

Strathcona's hospital is being planned with 72 acute care beds. Capital Health is already looking to the future needs of the community, planning the facility with the capacity to add another 36

beds in future. Residents will have access to a 24/7 emergency department, obstetrics, surgery, laboratory, pharmacy and rehabilitation services and radiology services.

The hospital site also includes a 20-bed residential facility operated by Children and Adolescent Services Association (CASA) for children and adolescents with mental health problems.

Construction is expected to begin any time on the CASA facility, with work on the hospital to begin shortly afterward.



Exterior plan for new Strathcona County Hospital

Property tax rebate for seniors

For the first time, Strathcona County seniors on low incomes will receive a rebate of \$100 on their municipal property tax.

To qualify for the rebate, seniors must be 65 or older, own residential property in Strathcona County, live in Strathcona County and be eligible for the Alberta Seniors' Benefit Program.

There is no need for seniors to apply;

the rebates will be processed automatically through a program administered by the Province. The cheques are expected to be mailed in mid-summer.

Council was pleased to approve the rebate as a way of showing our support for people in our community who particularly need assistance. Any questions about the program can be directed to 464-8196.

Community notes

Lakeland Drive

Finally we saw Lakeland Drive open late last year. This has been a long time coming so I am hopeful that access to this new exit is serving the northern Clarkdale residents well.

For the residents living north of Clarkdale, it is still somewhat of an aggravation to have to go to Baseline Road to access the western parts of Sherwood Park. Approved in the budget this year is the completion of Lakeland Drive from Sherwood Drive to Clover Bar Road. The tender has been advertised so the good Lord willing and the weather permitting, we will have an east-west connection across the top of Sherwood Park by fall.

Highway 21

The Highway 21 build out will continue again this year but we will see limited activity along the Summerwood and Clarkdale Meadows side. The completion of construction is still set for 2009.

Noise issues remain a concern to residents backing onto and in close proximity of the highway. We have received some minor concessions from the Provincial Government in that they will do a further noise study once the twinning of the highway is complete. The Alberta Infrastructure standard for noise is 65 decibels per hour over a 24-hour period. Unless the noise crosses that threshold, noise attenuation will not be considered by Alberta Infrastructure.

They are also contemplating reducing the speed on the stretch of highway that passes Sherwood Park and they are also considering tree plantings. Our window of opportunity to affect change is still open and I will do all I can to represent the interests of the residents.

New high school

Just recently the Provincial Government announced funding for a number of new schools in the province. As a result of that announcement, Sherwood Park will be receiving a new Catholic high school.

The school is planned to be located just west of the hospital and as you are aware, the hospital is just west of Clover Bar Road. This project is just in the announcement stage so I will keep you posted on developments.

Utility emergency? Call 467-7785

Just recently a resident had sewage back-up in their home. They were unaware that there is a 24-hour emergency line in the event of utility problems. It is not readily discerned in County information sources so I thought I should make you all aware of it.

The 24-hour phone number is 467-7785. If you have an urgent problem, the County will respond 24 hours a day.

Census May 1-15

With a growing population, it is essential for Strathcona County to have an accurate count of its residents.

Accurate and up-to-date information enables us to plan ahead for municipal services the community will require. Population is also the base on which a number of provincial grants are calculated.

That's why, between May 1 and 15, census takers will call at every household to record the number of residents, their age and gender.



Summer collegiate baseball comes to Strathcona County



Richard Bourne, General Manager of The Dukes (left) and Councillor Wlodarczak

Baseball fans in the County are in for a treat this summer, with the introduction of the Sherwood Park Dukes, the newest collegiate summer team of the Western Major Baseball League. They will play at Centennial Park Diamond #9, a legacy of the 2007 Western Canada Summer Games.

Emerald Hills Urban Village

The Emerald Hills Urban Village (EHUV) is a neighbourhood development covering just over 20 hectares (50 acres) in the Emerald Hills Subdivision just south of Highway 16 on the west side of Cloverbar Road.

The first phase of this sustainable urban neighbourhood has been given the green light to proceed. A 128-unit townhouse development by Best Communities has been approved on the corner of Aspen Trail and Cloverbar Road.

What makes the Emerald Hills Urban Village particularly noteworthy is that it is the first project in Canada to be developed under a program called Sustainable Urban Neighbourhoods, or SUN Living. Every aspect of the development is being planned to incorporate environmental sustainability, including a community energy system similar to the one now in operation in Centre in the Park.

New waste collection system starts in June

I'm pleased to say that in June, the County will be introducing a number of improvements to our waste collection services. The changes reflect the environmental consciousness that has wide support in our community—and will also serve us well as waste disposal costs rise in the future.

What will be new?

- Roll-out carts will be supplied to each household. These allow for automated collection, making pick-up cleaner, more efficient and safer for workers.
- More materials will be picked up at the curbside for recycling, including cardboard, glass, Styrofoam, metal and plastic.
- Each household will be asked to separate organic materials including kitchen waste for collection every two weeks. Organic materials make up 52 per cent of what we now send to landfill. So there's a large benefit if we separate this for composting. No question, the new system will

require residents' cooperation. To help everyone adjust to the new system, the County will be supplying information, and offering assistance in person and through a special hotline. Watch for more information in the weeks to come.

Why the changes?

For some time now, a number of residents have been encouraging the County to offer more curbside recycling services. It's clear our community cares about the environment.

There are also practical considerations. As of the end of this year, the Clover Bar Landfill will no longer accept waste. We know that whatever alternatives we use, costs are going to rise in the long term. Anything we can do now to begin reducing the amount of waste sent to landfill will be beneficial in the future.



Centre in the Park/Community Centre

The changes around County Hall seem to happen on a daily basis. If you haven't been by lately, you will be surprised to see a big excavation where the County Annex building and staff parking lot used to be.

The site is being prepared for the new Community Centre which is scheduled to open in late 2010. The Community Centre will house the Strathcona County Library on two levels. Family and Community Services will be located in the Community Centre. An area called the agora will

accommodate a range of events from farmers' markets to seniors' events, performances and presentations. Meeting rooms will be available for the use of community organizations. Art and culture will be an important part of the Community Centre.

Complementing the indoor spaces will be Volunteer Plaza, and the Prairie Walk, which links to Festival Place and Broadmoor Lake Park.

Watch for more information on the Community Centre at the Trade Fair, April 11-13 at Millennium Place.



Traffic safety

Traffic Safety Plan being developed



All Councillors, especially the urban Councillors, receive many complaints from residents about unsafe driving practices and especially speed.

Council has heard this message loud and clear and strives at all times to deal with individual problems as they arise.

This year, Council has authorized administration to take further steps to deal with this. At present, a Traffic Safety Plan is being developed for the County.

This plan will be designed to consider the 4 Es: Education, Engineering, Enforcement and Evaluation.

In addition, Council has directed that a person who will be identified as the Traffic Safety Coordinator be retained to implement the plan. This person will coordinate all County action in the area of Traffic Safety and provide a focal point to ensure plans and actions are coordinated.

This is the first step in many that will be made to enhance traffic safety on the roads.

Summer is approaching and with summer comes more activity. Like me, I am sure you can recount many situations where people speed, disregard stops signs and drive in an otherwise unsafe manner.

Responsibility lies with all of us. Let us make this driving season a safe one. If you see a violation, do not be afraid to record the licence number and report it to the police. They will respond.

Remember, safe and courteous driving begins with each one of us individually.