

BYLAW 93-2003

A BYLAW OF STRATHCONA COUNTY IN THE PROVINCE OF ALBERTA, FOR THE PURPOSE OF AMENDING BYLAW NO. 27-2002 BEING THE SUMMERWOOD AREA STRUCTURE PLAN.

WHEREAS it is deemed advisable to amend the Summerwood Area Structure Plan;

NOW THEREFORE, the Council of Strathcona County, duly assembled, pursuant to the authority conferred upon it by the *Municipal Government Act, R.S.A. 2000, c. M-26*, and amendments thereto, enacts as follows:

That Bylaw 27-2002, be amended as follows:

1. That the first paragraph of **Section 4.7 - Transportation** be amended as follows:
The Summerwood ASP area will have a transportation system composed of major collector roads, minor collector roads and a series of local roads and lanes. Four primary points will provide access to Summerwood from arterial roadways. Three of the proposed access points are from the future Lakeland Drive and one major access point is east from Clover Bar Road. Two of the proposed access points onto Lakeland Drive are aligned with the existing and approved access points to Davenport Drive in Davison Creek and the future extension of Clarkdale Drive in Clarkdale meadows....
2. That **Figures 4 - 9** be deleted and replaced with Figures 4 - 9 attached hereto and forming part of this Bylaw in order to identify the third access onto Lakeland Drive and the realigned water distribution.

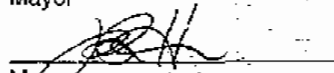
Read a first time this 14 day of October, 2003.

Read a second time this 14 day of October, 2003.

Read a third time and finally passed this 14 day of October, 2003.

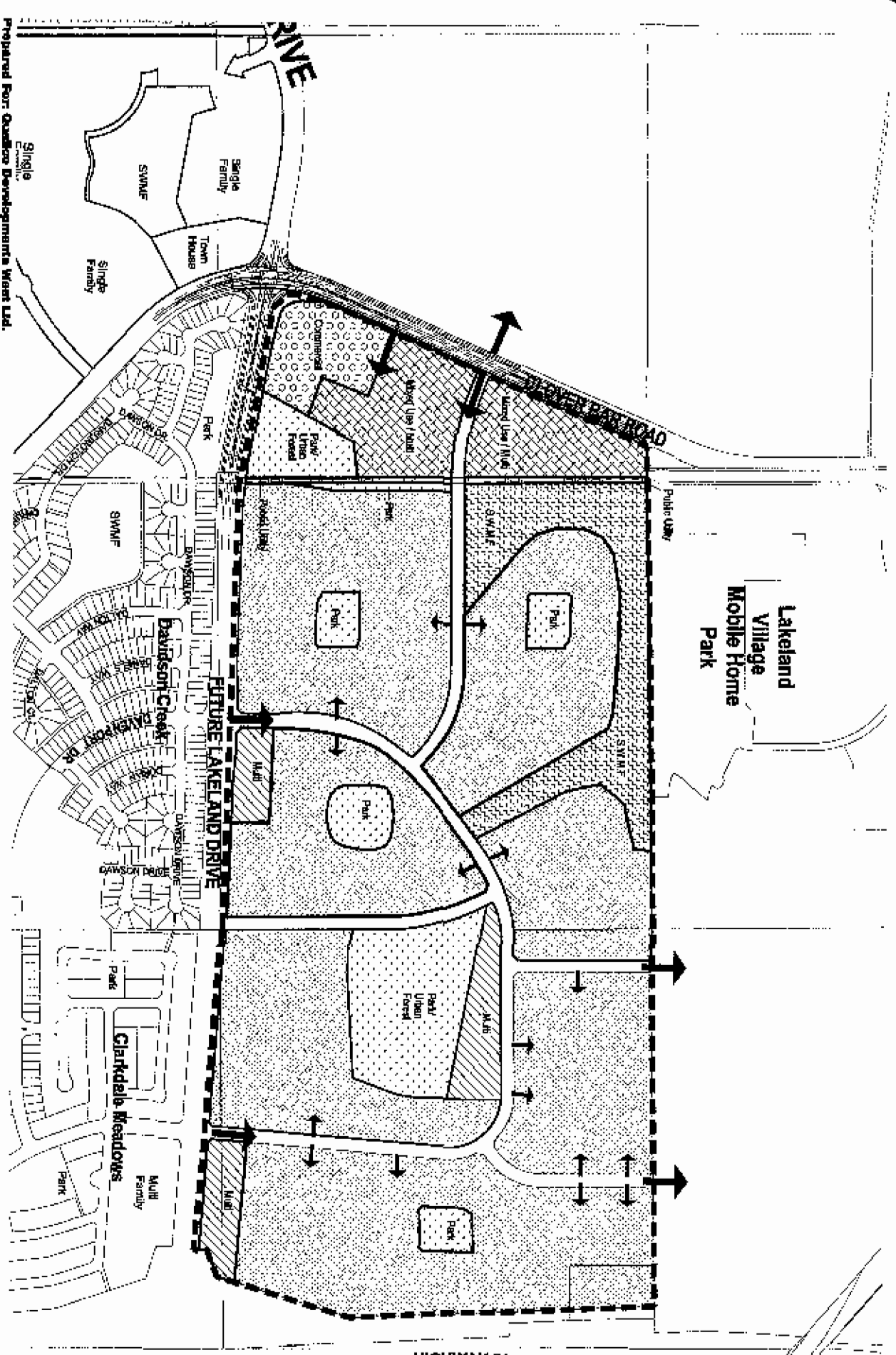


Mayor



Manager,
Legislative & Legal Services

Date Signed: October 17, 2003



Prepared For: **Quebec Developments West Ltd.**
 Strathcona County

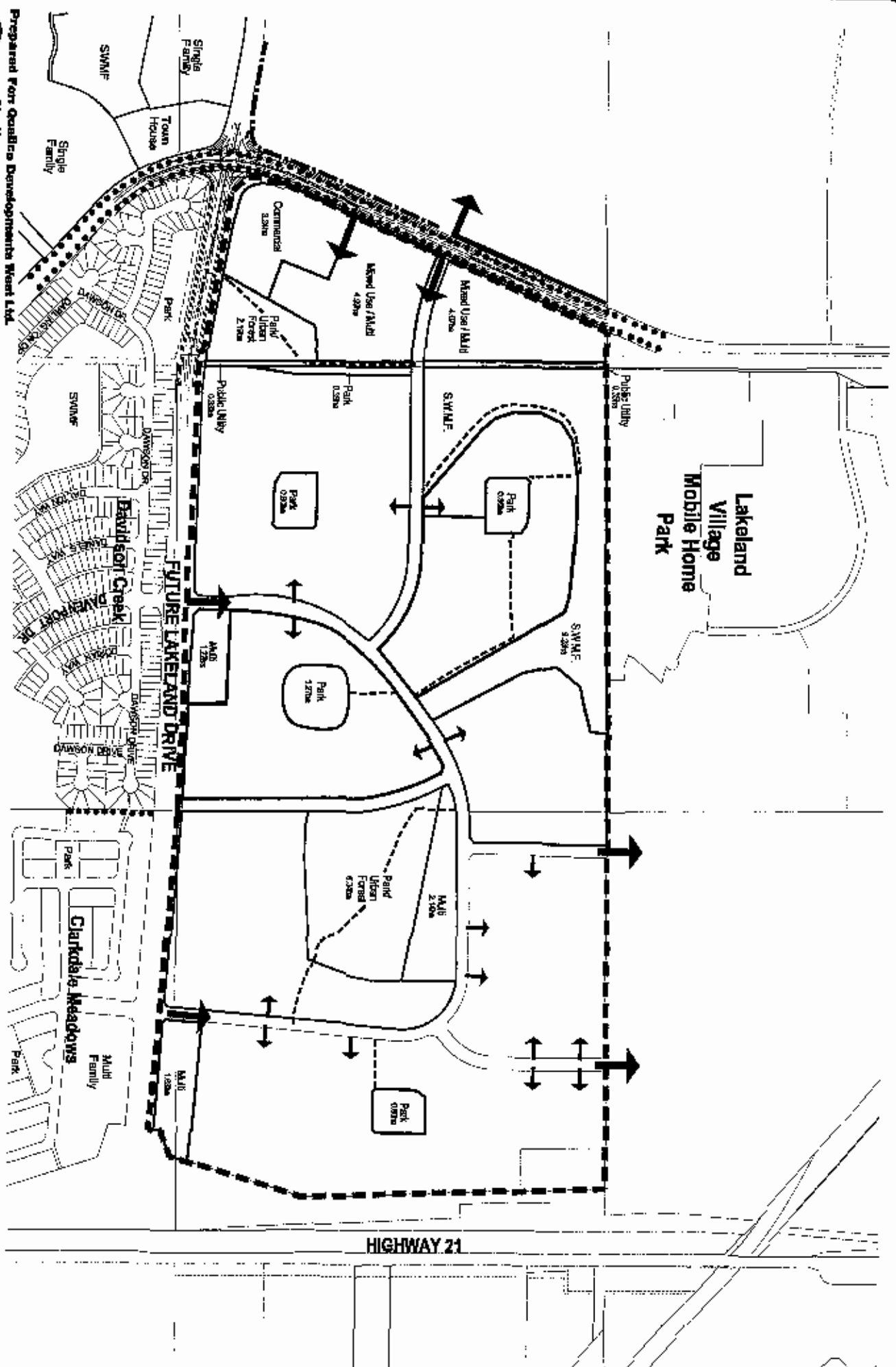
DATE: 08/21/12
 DATE: 10/26/12
 DATE: 12/10/12
 DATE: 02/01/13

- LEGEND:**
- ASP BOUNDARY
 - ← ACCESS POINTS
 - [Diagonal Hatching] LOW DENSITY RESIDENTIAL
 - [Cross-hatching] MEDIUM DENSITY RESIDENTIAL
 - [Stippled] MIXED USE/MEDIUM DENSITY MULTIPLE

- [Stippled] COMMERCIAL
- [Diagonal Hatching] PARK / OPEN SPACE / M.R.
- [Cross-hatching] STORM WATER MANAGEMENT FACILITY
- [Stippled] PUBLIC UTILITY

LAND USE CONCEPT

SUMMERWOOD
 Area Structure Plan

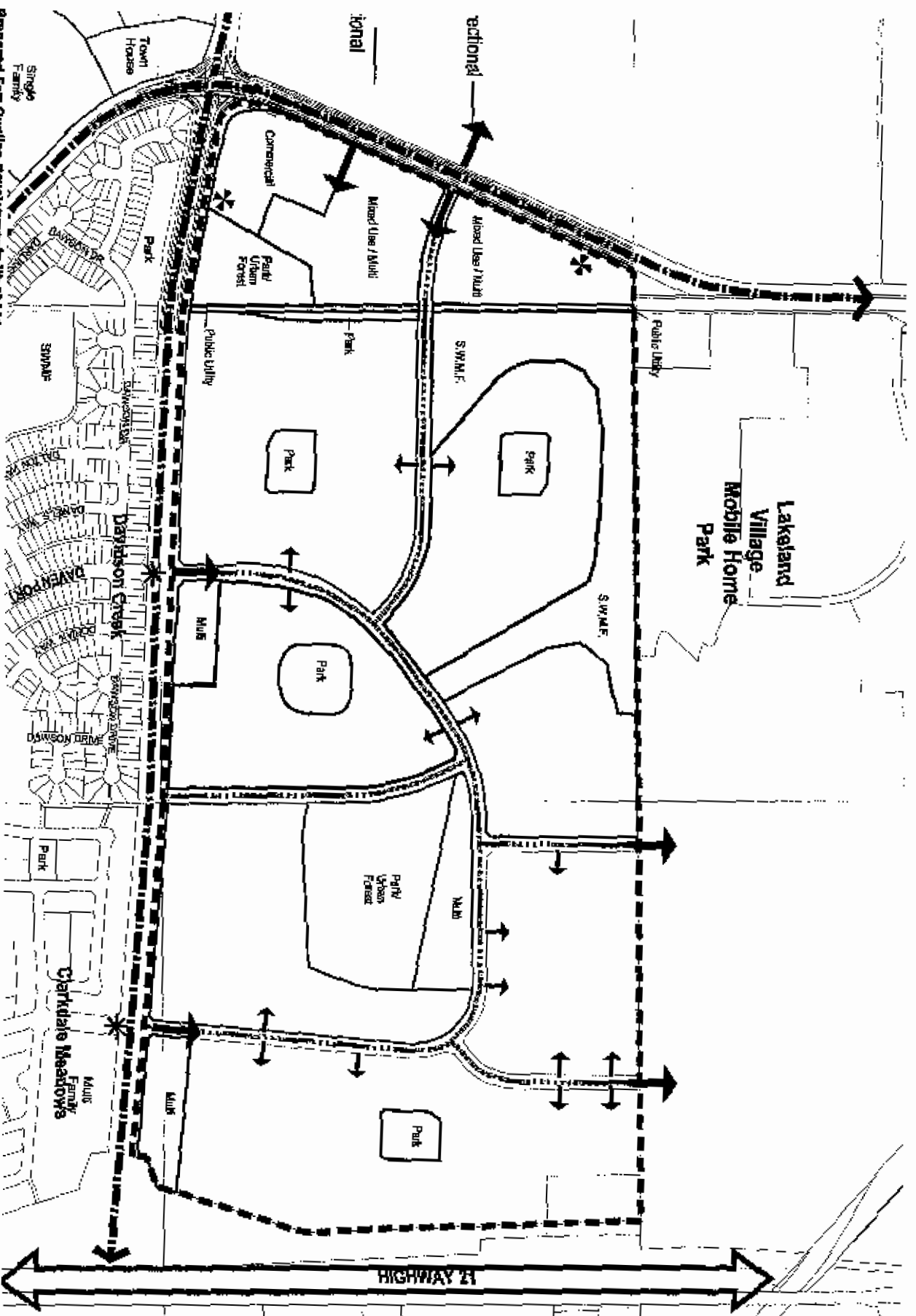


Prepared For: **Qualico Developments West Ltd.**
Strathcona County
 Date: April 3, 2022
 Staff: 0266-03-02-01
 Date: 11/20/2021 C.M.C.
 File: 709.sps

- LEGEND:**
- ASP BOUNDARY
 - HERITAGE TRAIL
 - TRANS CANADA TRAIL
 - MAJOR PEDESTRIAN LINK
 - MINOR PEDESTRIAN LINKS
 - ← ACCESS POINTS

OPEN SPACE LINKAGES
SUMMERWOOD
 Area Structure Plan

FIGURE 3



Prepared For: Qualico Developments West Ltd.
 Strathcona County

LEGEND:

- ASP BOUNDARY
- HIGHWAY
- MAJOR ARTERIAL
- MAJOR COLLECTOR
- ACCESS POINTS
- RESTRICTED ALL DIRECTIONAL
- RIGHT IN / RIGHT OUT ACCESS



BYLAW 93-2003

TRANSPORTATION
SUMMERWOOD
 Area Structure Plan

FIGURE

UMG

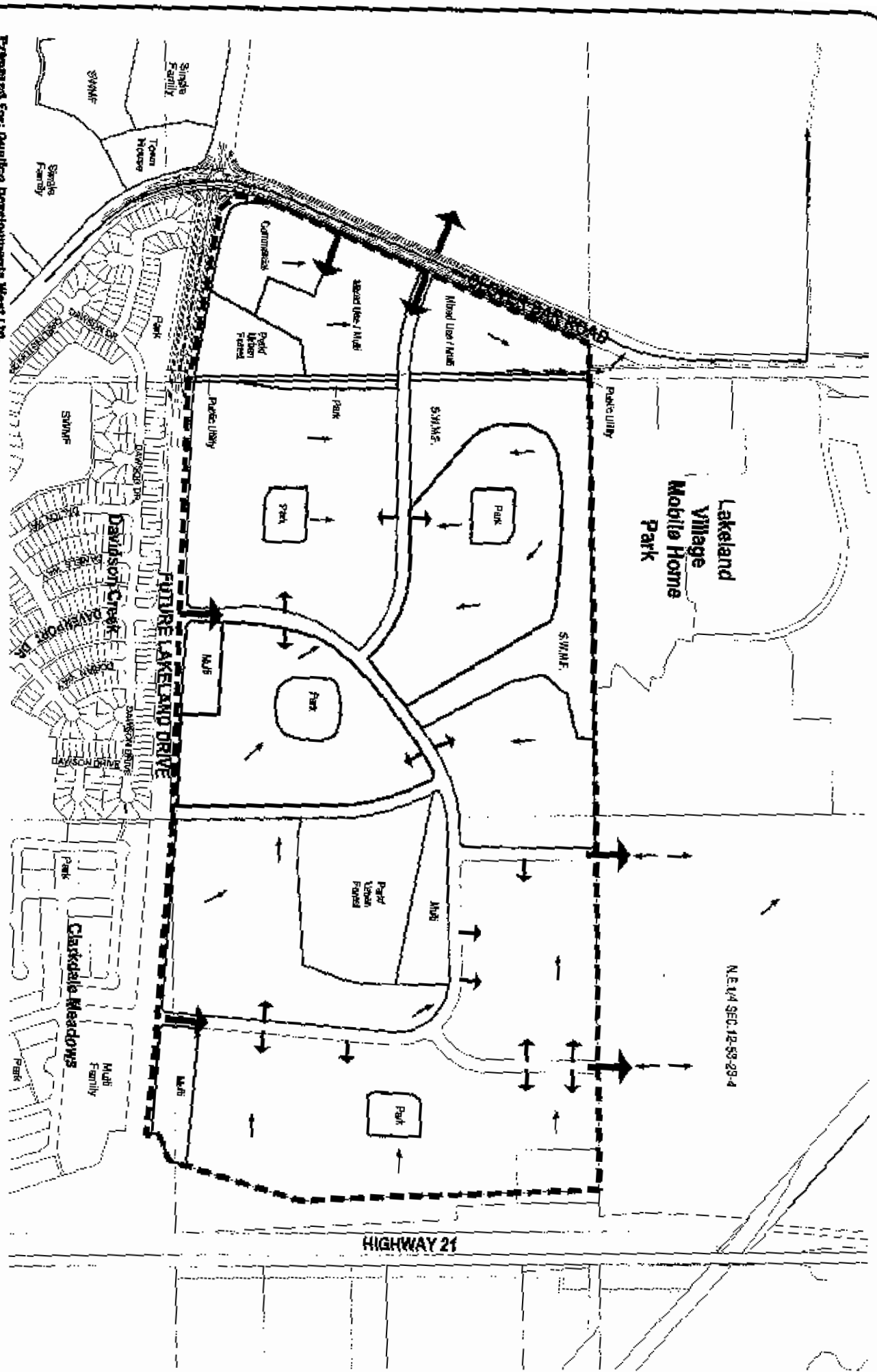
Prepared For: Qualitas Developments West Ltd.
 Strathcona County

DATE: MARCH 27, 2012
 DRAWN: GORDON, J.S. 02-01
 CHECKED: H.S.
 FILE: 312

LEGEND:

- ASP BOUNDARY
- SANITARY FLOW DIRECTION
- EXISTING SANITARY TRUNK
- ACCESS POINTS

Scale: 1" = 100'



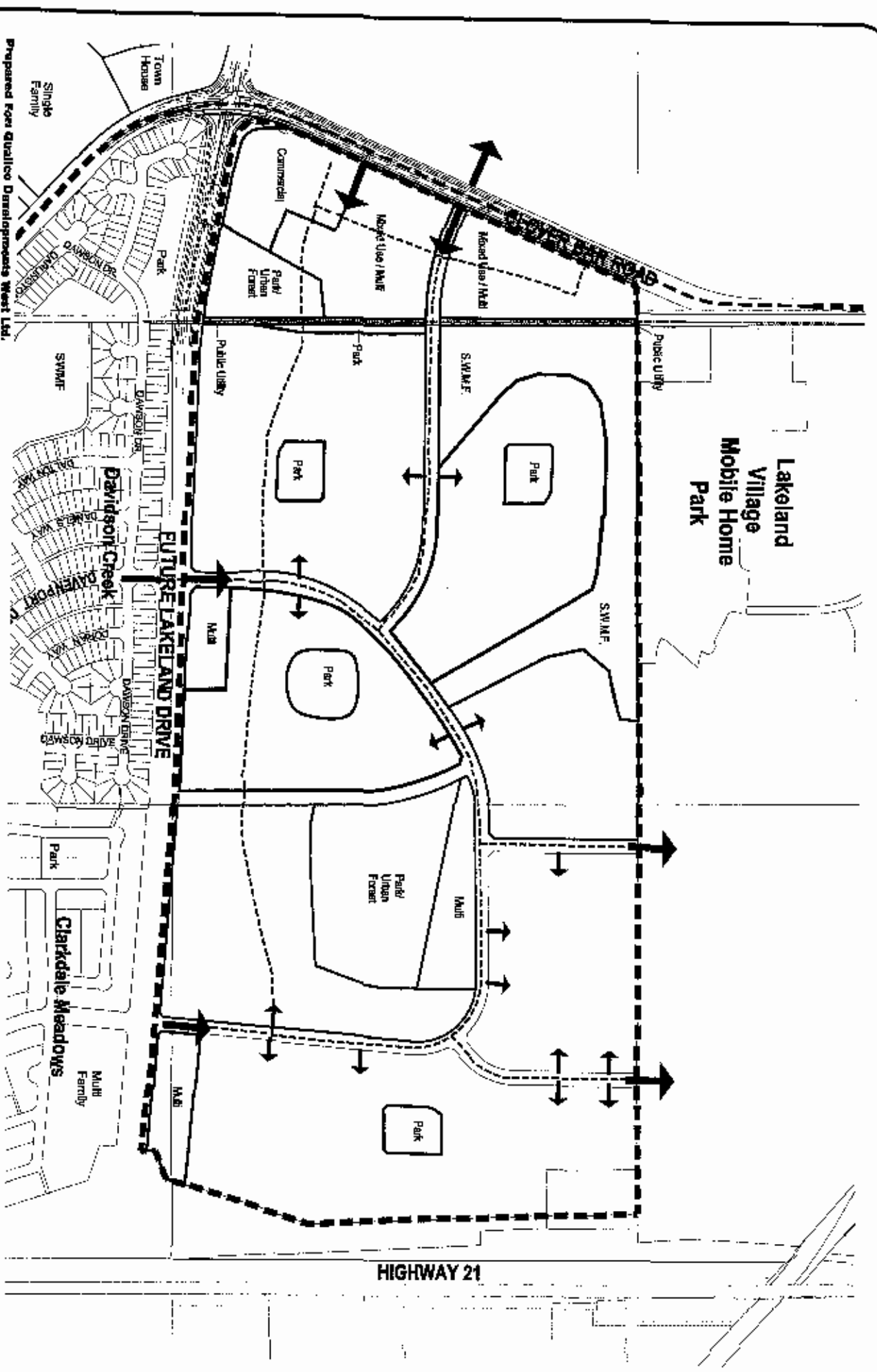
N.E. 1/4 SEC. 12-S9-29-4

SANITARY SERVICING

SUMMERWOOD

Area Structure Plan

FIGURE



Prepared For: **Qualitec Developments West Ltd.**
 Strathcona County

DATE: 15-02-07
 DRAWN: [Name]
 CHECKED: [Name]

SCALE: 1:1000
 PROJECT: [Name]

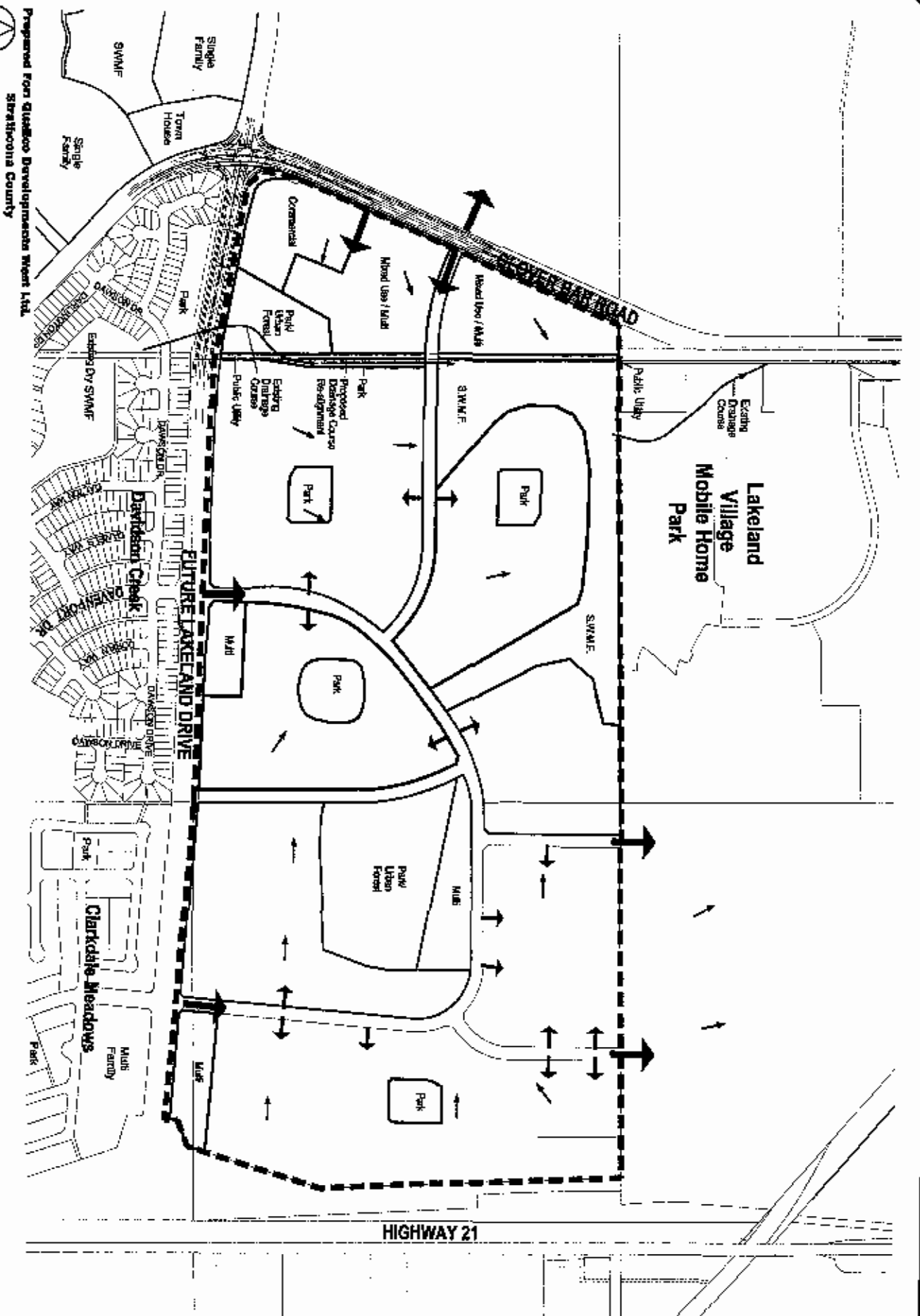
DATE: 15-02-07
 DRAWN: [Name]
 CHECKED: [Name]

LEGEND:
 --- ASP BOUNDARY
 --- EXISTING WATER TRANSMISSION MAIN
 --- EXISTING 300MM WATER TRANSMISSION MAIN
 --- PROPOSED WATER MAIN
 --- PROPOSED 600MM WATER TRANSMISSION MAIN
 --- ACCESS POINTS



WATER SERVICING
SUMMERWOOD
 Area Structure Plan

FIGURE 8



DATE: MAR 27, 2002
 TIME: 10:00 AM - 12:00 PM
 DRAWN BY: W. SIMPSON/DLM
 CHECKED BY: J. P.

Prepared For: Quabbin Developments West Ltd.
 Stratfordon County

LEGEND:
 --- ASP BOUNDARY
 - - - DRAINAGE DIRECTION
 ← ACCESS POINTS

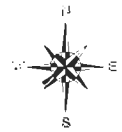
Scale: 1" = 500'

STORM SEWER

SUMMERWOOD

Area Structure Plan

FIGURE 3



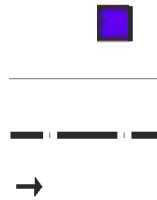
Summerwood Area Structure Plan Bylaw 93-2003

Date of Adoption 14 October 2003

- Residential
 - Low Density
 - Medium Density
 - Mixed Use/Medium Density Multiple
- Open Space/Recreation
- Storm Water Management Facility
- Commercial



- PUL
- Road Plan
- ASP Boundary
- Access Points



Disclaimer of Liability

Strathcona County is not responsible for errors or omissions and assumes no responsibility for the accuracy, completeness, or usefulness of this information, and disclaims all liability of any kind whatsoever arising out of use of, this map. Any reliance on the information contained herein is at the user's risk. Changes are periodically made to the ASP's/ARP's and may be made without notice. It is therefore recommended that you contact Planning & Development Review Services for original Plans.

Telephone: (780) 484-8212
www.strathcona.ab.ca